

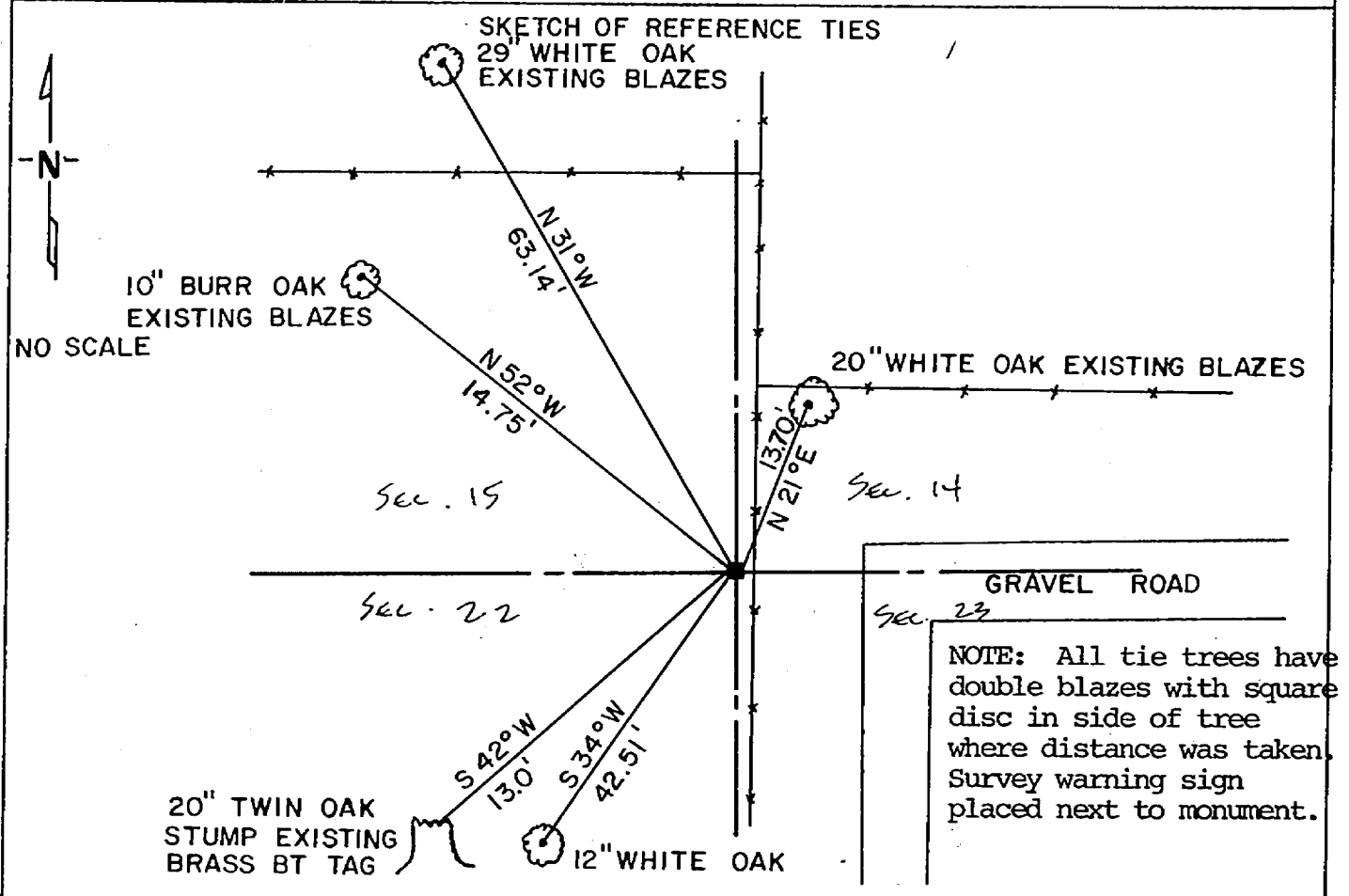
CERTIFICATE OF LOCATION OF GOVERNMENT CORNER

NORTHEAST Corner of Section 22, Township 133, Range 31, 5th P.M.

STATE OF MINNESOTA, County of Cass

At the corner location shown on the sketch:

- On 9/1/85 found a 2"x26" iron flush with ground. Replaced in same
DATE
location with county monument.
 left monument as found, lowered monument, removed monument (explain)
- On 8/3/85 placed a 2"x2"x36" square iron with standard Cass County
DATE
aluminum monument cap flush with ground.



Statement of evidence relative to this corner location is on back of page. 285672

I hereby certify that this document and the data contained herein was prepared by me or under my direct supervision.

David L. Jankuba 9/13/85
SIGNATURE DATE

Registration No. 17008

Land Surveyor, Professional Engineer
 County Surveyor, County Engineer

OFFICE OF THE COUNTY RECORDER OF
 County of Cass

I hereby certify that this document was filed in the RECORDER'S office at 3:00 P.M. on the 8 day of Nov. A.D., 19 85

COUNTY RECORDER Claudine Kayler
 By MS, Deputy

DOCUMENT NO. 285672

STATEMENT OF EVIDENCE FOR: Northeast corner of Section 22,
Township 133N, Range 31 West, Cass County, Minnesota.

In 1863, the original Government Survey was performed and a wood post was set to mark this corner location.

In 1921 E. B. Horst set 2" x 48" iron monument. County Book "D", page 9. Using information obtained from previous survey done in 1915 he set this corner in its lost position. (It has been found by Landecker & Associates, Inc. and Alle Welle, RLS #11873 that the 1915 Horst survey was in error and lines and corner established along or from the South lines of Sections 14, 15, 16 and 17 are in error).

In 1961 D. Anderson, RLS #3091 notes and ties out iron pipe monument fitting occupation of township road centerline to East and fences North-South.

1980 - Landecker & Associates, Inc. finds D. Anderson monument.

1981 - Alle Welle, RLS #11873 finds D. Anderson monument and uses it in survey of said Section 15.

1985 - Landecker & Associates, Inc. again finds and uses D. Anderson monument from 1961 and further accepts this monument to be a perpetuation of the original Government Corner.