

# CERTIFICATE OF LOCATION OF GOVERNMENT CORNER

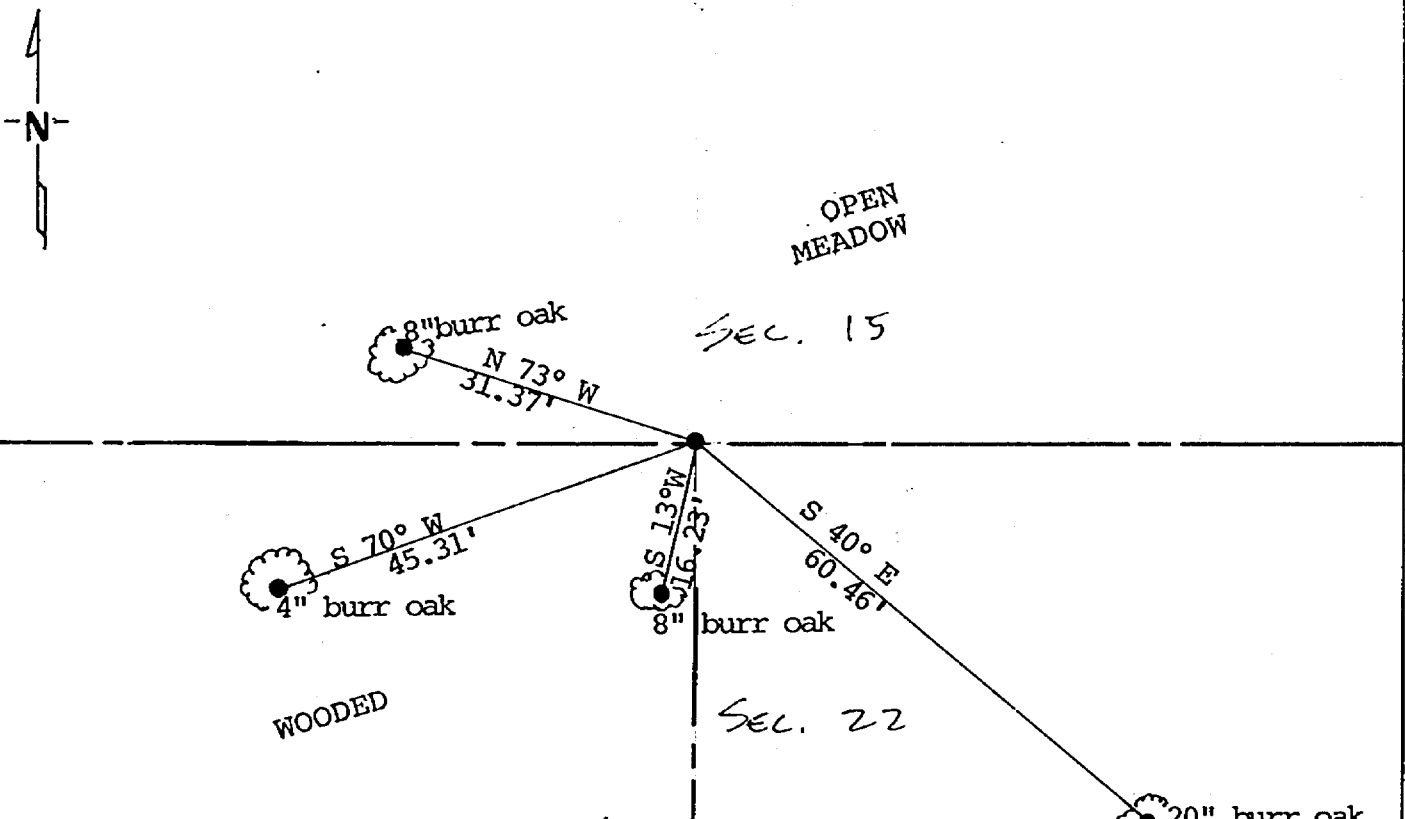
North Quarter Corner of Section 22, Township 133, Range 31, 5th P.M.

STATE OF MINNESOTA, County of Cass

At the corner location shown on the sketch:

- On \_\_\_\_\_ found a \_\_\_\_\_  
DATE
- left monument as found,  lowered monument,  removed monument (explain)
- On 8/16/85 placed a Standard County Cast Iron Monument  
DATE  
2" above surface

### SKETCH OF REFERENCE TIES



NOTE: All trees have double blazes and square disc on side where distance was taken from. Survey warning sign placed next to monument.

Statement of evidence relative to this corner location is on back of page.

I hereby certify that this document and the data contained herein was prepared by me or under my direct supervision.

David D. Ludaker 9/13/85  
SIGNATURE DATE

Registration No. 17008  
 Land Surveyor,  Professional Engineer  
 County Surveyor,  County Engineer

285671  
OFFICE OF THE COUNTY RECORDER  
County of Cass

I hereby certify that this document was filed in the RECORDER'S office at 2:55 P.M. on the 8 day of Nov, A.D., 1985

COUNTY RECORDER Cherline Kojan  
By MS, Deputy  
DOCUMENT NO. 285671

STATEMENT OF EVIDENCE FOR: North quarter corner, Section 22,  
Township 133 North, Range 31 West, Cass County, Minnesota.

In 1863, the original Government Survey was performed and a wood post was set to mark this corner location.

In 1981 and 1982 Alle Welle, RLS #11873, while surveying in Section 15, said township, set computed position as lost single proportionately between the Southwest and Southeast corner of said Section 15.

In 1985, Landecker & Associates, Inc. while surveying in said Section 22 concur with Welle's findings and set corner in its lost position. Occupation does not fit corner in area but resembles erroneous survey done by E. B. Horst in 1915 and 1921.

Landecker & Associates, Inc. accepts this corner to be a perpetuation of the original Government corner.