

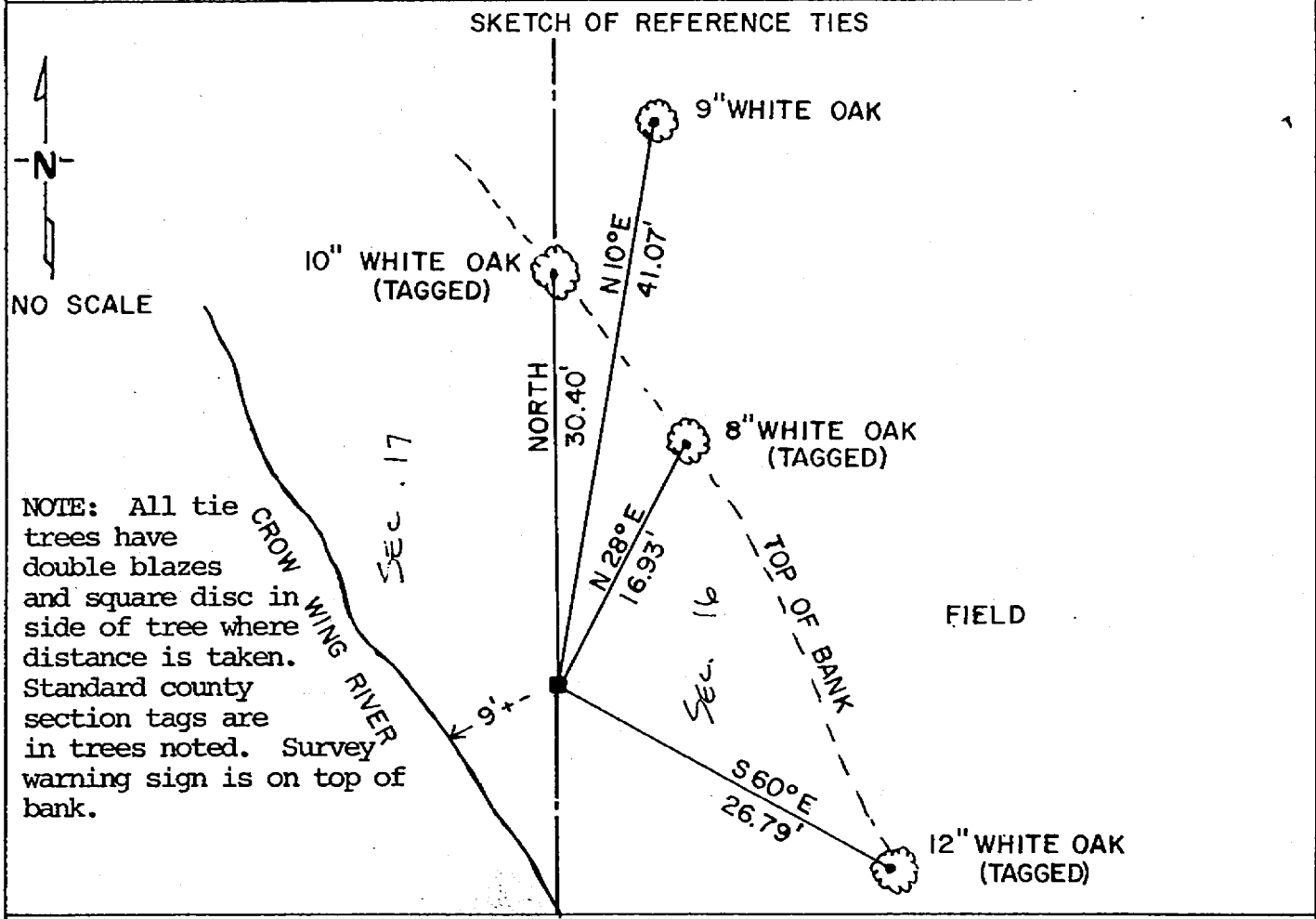
CERTIFICATE OF LOCATION OF GOVERNMENT CORNER

MC # 14 Corner of Section 17, Township 133, Range 31, 5th P.M.

STATE OF MINNESOTA, County of Cass

At the corner location shown on the sketch:

- On _____ found a _____
- left monument as found, lowered monument, removed monument (explain)
- On 7/25/85 placed a 2" x 2" x 36" square iron with standard Cass County aluminum monument flush with ground



Statement of evidence relative to this corner location is on back of page.

I hereby certify that this document and the data contained herein was prepared by me or under my direct supervision.

David D. Lander
SIGNATURE

DATE _____

Registration No. 17008

Land Surveyor, Professional Engineer

County Surveyor, County Engineer

285669

OFFICE OF THE COUNTY RECORDER
County of Cass

I hereby certify that this document was filed in the RECORDER'S office at 2:45 P.M. on the 8 day of Nov. A.D., 19 85

COUNTY RECORDER Cherise Kayler

By M.S., Deputy

DOCUMENT NO. 285669

STATEMENT OF EVIDENCE FOR: meander corner #14 common to Section 16 and 17, Township 133 North, Range 31 West, Cass County, Minnesota.

In 1863, the original Government Survey was performed and a wood post was set to mark this corner location.

In 1921 E. B. Horst set wood post of WCMC, County Book "D", Page 8 and Page 9. He replaced said post with a 2" x 48" iron monument.

In 1984 and 1985 Landecker & Associates, Inc. while surveying in said Sections 16 and 17 found the 1921 Horst Northwest bearing tree. However, after analyzing Horst's survey data and procedure, find an error in line measurements and solution for the North-South section line between said Section 16 and 17 and do not use Horst corner or data. Landecker & Associates, Inc. set said MC #14 at its lost position single proportionately between the Northeast corner and Southeast corner of said Section 17.

This location closely fits the topographic calls of the river as noted in the original Government Survey done in 1863.

Landecker & Associates, Inc. accepts this monument to be a perpetration of the original Government Survey.