

CERTIFICATE OF LOCATION OF GOVERNMENT CORNER

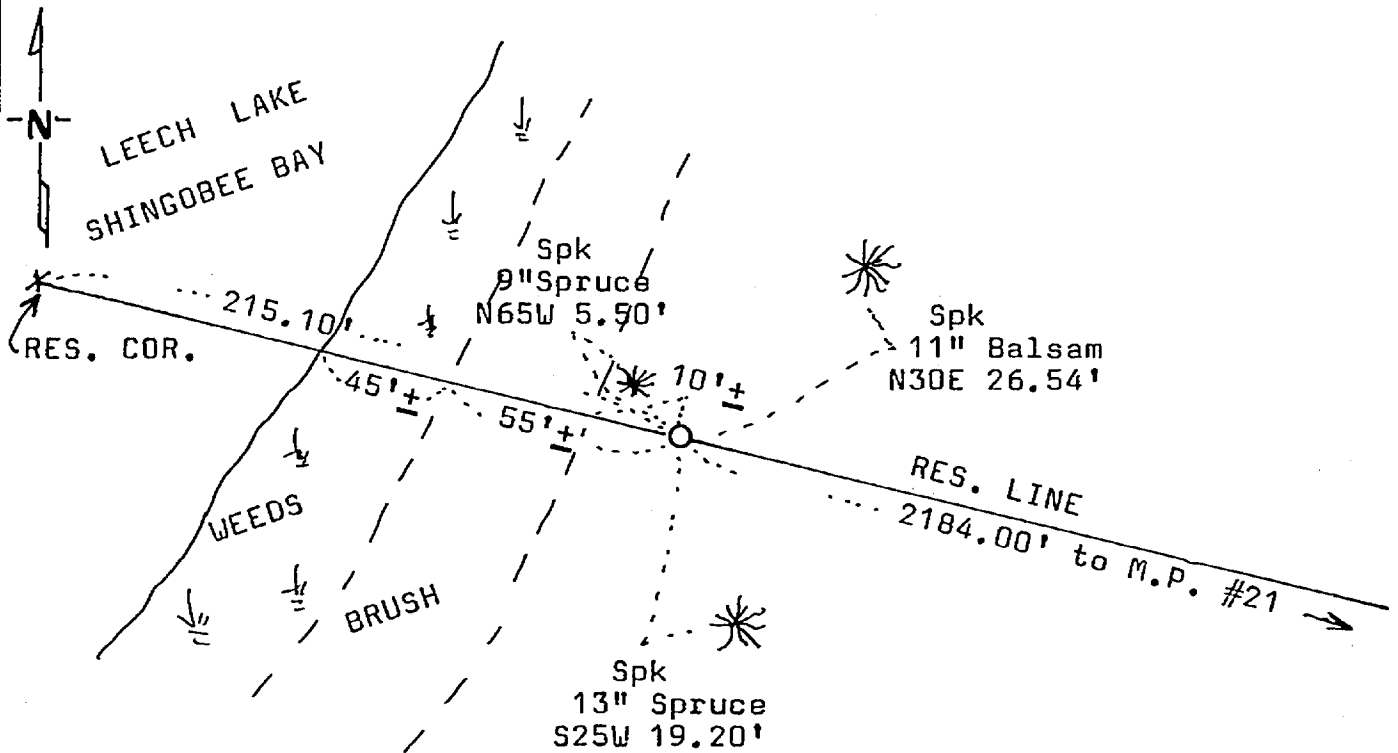
Reference to Leech Lake Reservation
Corner of Section 11, Township 141, Range 131, 5th P.M.

STATE OF MINNESOTA, County of CASS

At the corner location shown on the sketch:

- On _____ found a _____
DATE
- left monument as found, lowered monument, removed monument (explain)
- On 7/19/85 placed a 2"x2"x36" steel post with a 3"x3" aluminum cap on the reservation line for a reference point.
DATE

SKETCH OF REFERENCE TIES



Bearings are approximate

Statement of evidence relative to this corner location is on back of page. 284981

I hereby certify that this document and the data contained herein was prepared by me or under my direct supervision.

Ray A. Steen 10/7/85
SIGNATURE DATE

Registration No. 12684

Land Surveyor, Professional Engineer

County Surveyor, County Engineer

OFFICE OF THE REGISTER OF DEEDS

County of Cass

I hereby certify that this document was filed in the Reg. of Deeds office at 3:30 A.M. on the 9 day of Oct. A.D., 19 85

Register of Deeds Clouline Kayler

By MS, Deputy

DOCUMENT NO. 284981

STATEMENT OF EVIDENCE

- 1873 - U.S. General Land Office survey set a 6" square wood post for this corner in marsh at the southern extremity of a bay of Leech Lake and marked the following bearing trees: 8" Tamarack S 53 E 172 links and 10" N. Pine S 87 E 650 links.
- 1985 - County Surveyor's Records in the Courthouse were checked and no resurvey information was found on this corner.
- 1985 - U.S. Forest Service office in Cass Lake was contacted for information and no resurvey information was found on this corner.
- 1985 - After reestablishing Mile Post #21 on the reservation boundary, the position of this corner was computed based on the original GLO distance and the bearing based on the 1917 GLO dependent resurvey in this area. This position fell in several feet of water at the south end of Shingobee Bay. No evidence was found of the corner or of the Tamarack bearing tree. We found a large pine stump at the approximate area called for in the original notes for the N.Pine. The stump was too badly rotted to identify any type of marks. The GLO notes also called to the southwest corner of Section 11. Our computed position compared as follows: GLO calls 17.00 chains (1122.00') East, we measured 1113.17' and GLO calls 5.25 chains (346.50') North, we measured 350.72'. Our measurements are based on the section line being considered an East-West line. Based on this distance information and the location of the pine stump, I considered my computed position the best evidence of the reservation corner location. Since this location fell in the water, I set the county monument on the reservation line 215.10 feet easterly of the corner for a reference point. A county sign post was set on the east side of the monument.