

# CERTIFICATE OF LOCATION OF GOVERNMENT CORNER

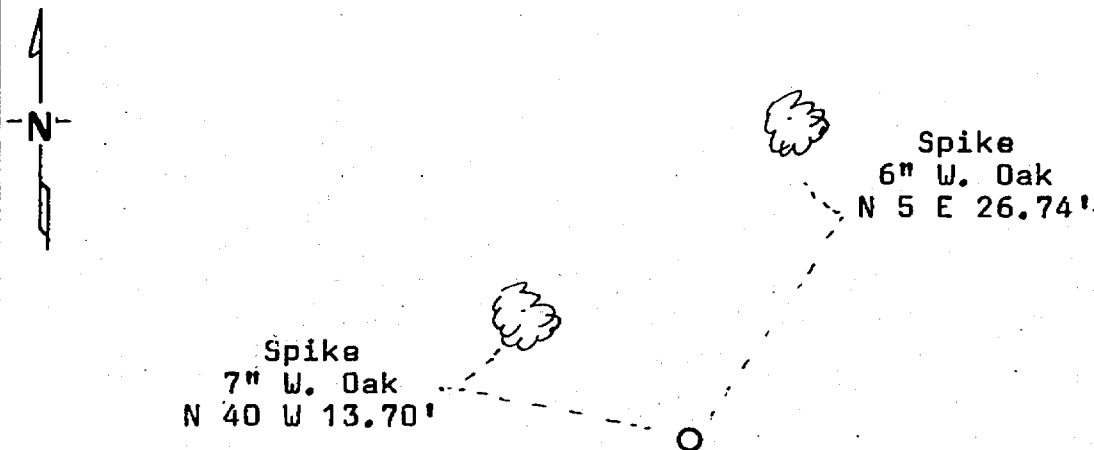
North Quarter Corner of Section 4, Township 141, Range 31, 5th P.M.

STATE OF MINNESOTA, County of Cass

At the corner location shown on the sketch:

- On 5/4/82 found a 2½" capped galvanized iron pipe as set by County resurvey in 1925.  
DATE  
 left monument as found,  lowered monument,  removed monument (explain)
- On 8/14/85 placed a 2" x 18" concrete filled galvanized iron pipe with 3" marked brass cap.  
DATE

### SKETCH OF REFERENCE TIES



Bearings are approximate

Statement of evidence relative to this corner location is on back of page. 284230

I hereby certify that this document and the data contained herein was prepared by me or under my direct supervision.

Larry H. Stevenson 8/21/85  
SIGNATURE DATE

Registration No. 12684

- Land Surveyor,  Professional Engineer
- County Surveyor,  County Engineer

### OFFICE OF THE REGISTER OF DEEDS

County of Cass

I hereby certify that this document was filed in the Reg. of Deeds office at 3:15 P.M. on the 6 day of Sept. A.D., 19 85

Register of Deeds Clondine Kaye  
 By MS, Deputy

DOCUMENT NO. 284230

## STATEMENT OF EVIDENCE

- 1873 - U. S . General Land Office Survey set wood post for this corner and marked the following bearing tress: 24" W. Pine N 76 E 25 links and 3" Poplar S 21 W 21 links.
- 1917 - County Surveyor's Book C on page 125 shows a survey by E.B. Horst where he set an iron monument at this corner by lost method between the section corners.
- 1925 - County resurvey plat "E-51" was filed showing the subdivision of Section 4, 141-31. Survey was signed by John M. Greene. Survey shows iron monument at this corner set by lost method midway between the northeast and northwest section corners. His distance between section corners was 4848.4 feet.
- 1982 - I ran a traverse along the north line of said Sec. 4 between the NW and NE corners, both marked by 2½" capped galvanized iron pipes as shown on Greene's 1925 resurvey. I measured 4842.89 feet between the section corners. At the quarter corner location, I found a 2½" capped galvanized iron pipe down 0.3 feet below ground surface. This pipe fit the lost position well as set by Greene & Horst. I found the pipe to be 1.05 feet west and 0.46 feet north of the lost position (midway and on line between section corners). I accepted the pipe as marking the quarter corner location.
- 1985 - We drove in place pipe down and set a U.S. Forest Service monument on top. Monument is 2" x 18" concrete filled galvanized iron pipe with 3" brass cap. Steel fence posts were set east and west of the pipe.