

CERTIFICATE OF LOCATION OF GOVERNMENT CORNER

East 1/4 Corner of Section 31, Township 144N, Range 25W, 5th P.M.

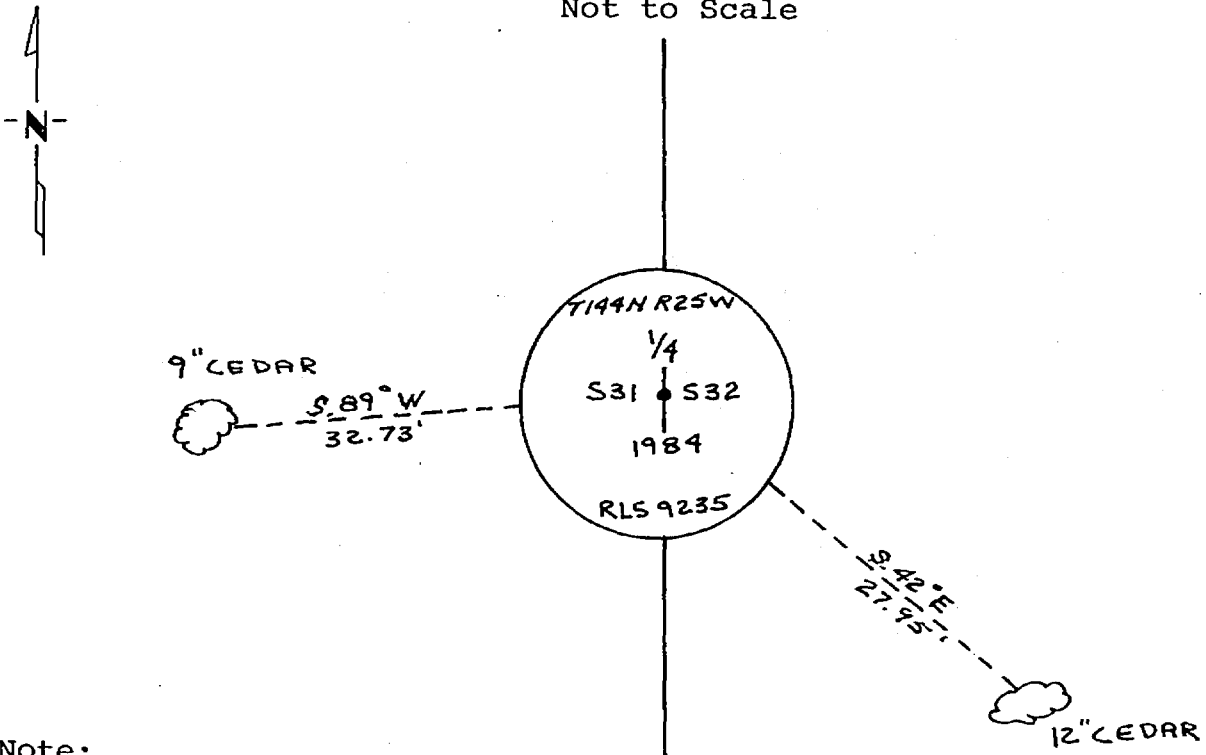
STATE OF MINNESOTA, County of Cass

At the corner location shown on the sketch:

- On _____ found a _____
DATE
- left monument as found, lowered monument, removed monument (explain)
- On 9-26-1984 placed a 2 1/2" (O.D.) by 5 feet long galvanized
DATE iron pipe with 3" brass cap stamped as shown Up 1.5 feet

5° East declination

SKETCH OF REFERENCE TIES
Not to Scale



Note:

Trees are blazed & scribed with B.T. tag. Distances shown are to a 20^d nail in notch painted red on side of tree.

Statement of evidence relative to this corner location is on back of page.

I hereby certify that this document and the data contained herein was prepared by me or under my direct supervision

James H. Park 3/29/85
SIGNATURE DATE

Registration No. 9235

- Land Surveyor, Professional Engineer
- County Surveyor, County Engineer

OFFICE OF THE COUNTY RECORDER
County of Cass

I hereby certify that this document was filed in the Co. Recorders office at 12:05 P.M. on the 15 day of May A.D., 19 85

County Recorder Claudia Kaylon

By ms, Deputy

DOCUMENT NO. 281981

Statement of Evidence:

X5

This corner was originally established in April, 1876, by B.C. Baldwin, Deputy Surveyor. The field notes of that survey are filed in the office of the Secretary of State, St. Paul, Minnesota. Mr. Baldwin's notes state that a post was set to mark the corner and referenced by the following:

A 8" Tamarck that bears N43°E a distance of 14 links [9.24 feet]
A 4" Spruce that bears N68°W a distance of 15 links [9.90 feet]

On July 16, 1984, personnel from Advance Surveying & Engineering Co. made a thorough search for this corner and the above mentioned references but to no avail. However we do find 2 Tamaracks that the U.S.F.S. has cut open looking for original Bearing Trees. No evidence found.

On September 26, 1984, an additional search was made by Advance prior to reestablishing this corner at its "lost" position half way and on line between adjacent Section corners.