

CERTIFICATE OF LOCATION OF GOVERNMENT CORNER

Southeast Corner of Section 28, Township 144N, Range 25W, 5th P.M.

STATE OF MINNESOTA, County of Cass

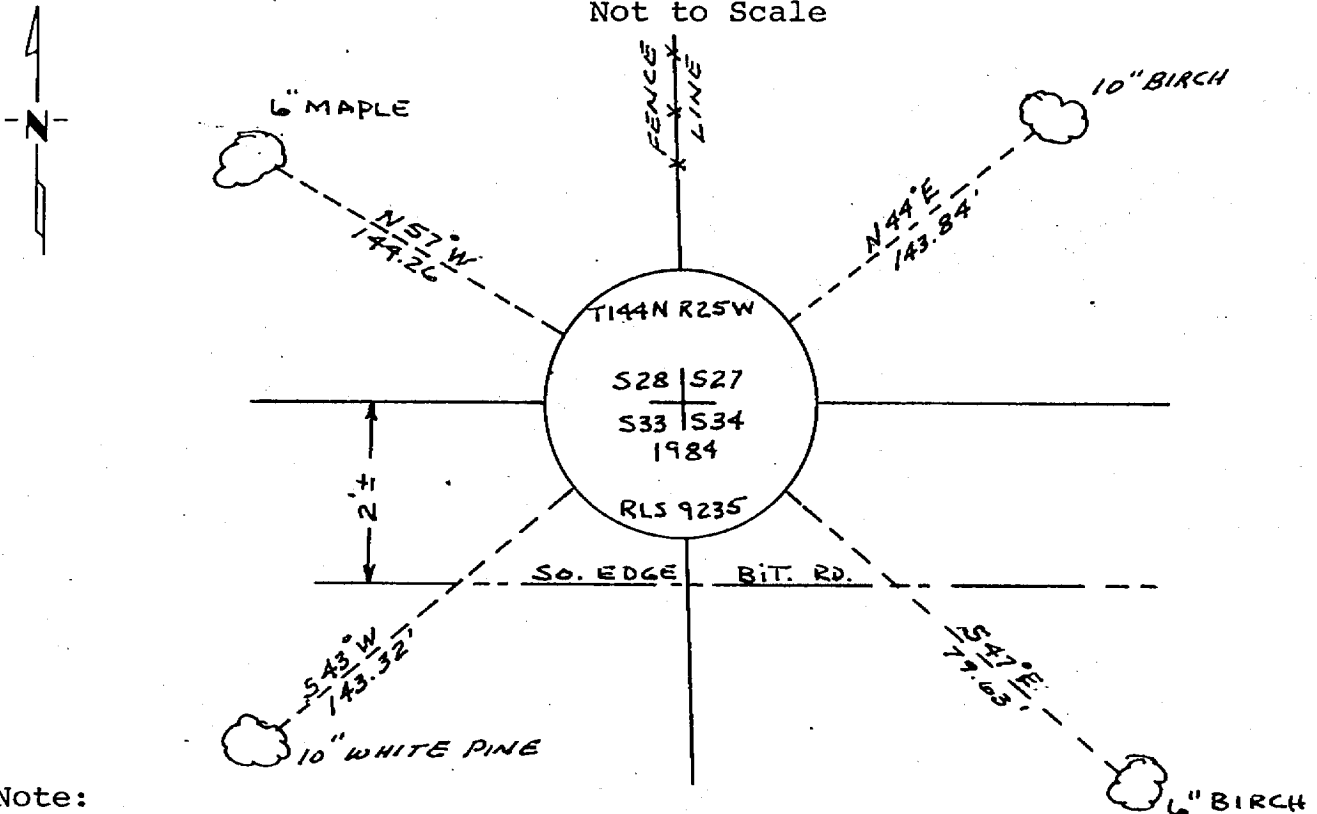
At the corner location shown on the sketch:

- On 5-4-1984 found a 2" x 31" iron pipe Down .40'
DATE
- left monument as found, lowered monument, removed monument (explain)
- On 9-5-1984 placed a 5/8" x 36" aluminum rod with 3" aluminum cap
DATE stamped as shown Down .30' -2' north of south edge bituminous

5° East declination

SKETCH OF REFERENCE TIES

Not to Scale



Note:

Trees are blazed & scribed with B.T. tag. Distances shown are to a 20^d nail in notch painted red on side of tree.

Statement of evidence relative to this corner location is on back of page.

I hereby certify that this document and the data contained herein was prepared by me or under my direct supervision.

James H. Paul 3/29/85
SIGNATURE DATE

Registration No. 9235

- Land Surveyor, Professional Engineer
- County Surveyor, County Engineer

281976
OFFICE OF THE COUNTY RECORDER
County of Cass

I hereby certify that this document was filed in the Co. Recorders office at 11:40 A.M. on the 15 day of May A.D., 19 85

County Recorder Clouline Kayler
By MS, Deputy

DOCUMENT NO. 281976

Statement of Evidence:

V13

This corner was originally established in April, 1876, by B.C. Baldwin, Deputy Surveyor. The field notes of that survey are filed in the office of the Secretary of State, St. Paul, Minnesota. Mr. Baldwin's notes state that a post was set to mark the corner and referenced by the following:

A 8" Balsam that bears N38°E a distance of 12 links [7.92 feet]
A 10" Balsam that bears S52°E a distance of 6 links [3.96 feet]
A 5" Maple that bears S39°W a distance of 23 links [15.18 feet]
A 7" Balsam that bears N45°W a distance of 14 links [9.24 feet]

On May 4, 1984, personnel from Advance Surveying & Engineering Co., U.S.F.S. and Cass Co. made a thorough search for this corner and the above mentioned references but to no avail. Using a backhoe we dig a 4' by 4' wide hole in roadbed. At .50 feet down we find 2" by 31" iron pipe under Bituminous in gravel subbase. Original ground at approximately 18" down. This pipe appears to have been dug in approximately 2 feet and then driven the rest of the way. This pipe was probably set sometime after 1954. Old 1954 road plans show existing centerline to be South of where present centerline is now, and would fit found pipe. Also old Forest Service location tag states corner in centerline of road.

On September 5, 1984, personnel from Advance set a monument as shown on the sketch at the position of the found pipe.