

# CERTIFICATE OF LOCATION OF GOVERNMENT CORNER

Southeast Corner of Section 29, Township 144N, Range 25W, 5th P.M.

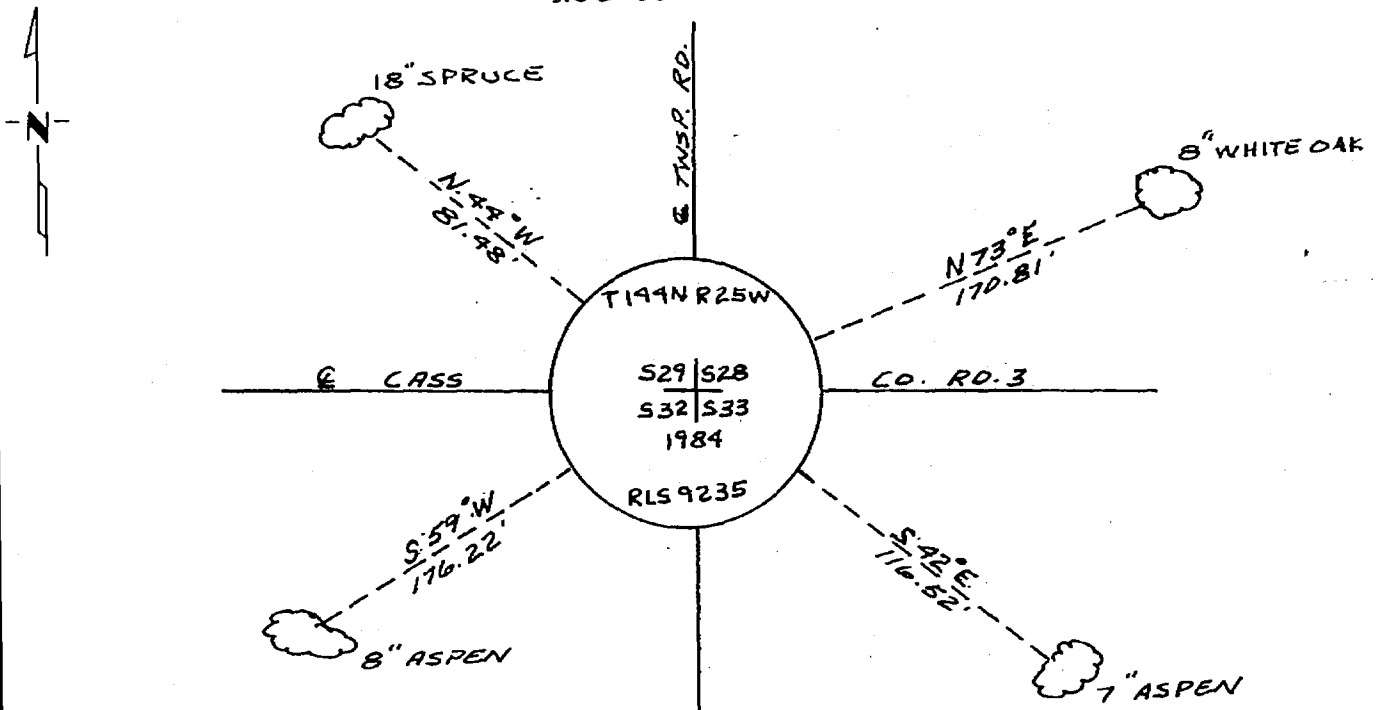
STATE OF MINNESOTA, County of Cass

At the corner location shown on the sketch:

- On 5-4-1984 found a 1/2" x 13" pipe flush with bituminous on  
DATE  
E E County Road & Township Road to the north  
 left monument as found,  lowered monument,  removed monument (explain)
- On 9-5-1984 placed a 5/8" x 36" aluminum rod with 3" aluminum  
DATE  
cap stamped as shown Down .50' on E E position

5° East declination

SKETCH OF REFERENCE TIES  
Not to Scale



Note:

Trees are blazed & scribed with B.T. tags. Distances shown are to a 20d nail in notch painted red on side of tree.

Statement of evidence relative to this corner location is on back of page.

I hereby certify that this document and the data contained herein was prepared by me or under my direct supervision.

James H. Parker 3/29/85  
SIGNATURE DATE

Registration No. 9235

Land Surveyor,  Professional Engineer

County Surveyor,  County Engineer

281974  
 OFFICE OF THE COUNTY RECORDER  
 County of Cass

I hereby certify that this document was filed in the Co. Recorders office at 11:30 A.M. on the 15 day of May A.D., 19 85

County Recorder Claudia Kayler

By ms, Deputy

DOCUMENT NO. 281974

Statement of Evidence:

V9

This corner was originally established in April, 1876, by B.C. Baldwin, Deputy Surveyor. The field notes of that survey are filed in the office of the Secretary of State, St. Paul, Minnesota. Mr. Baldwin's notes state that a post was set to mark the corner and referenced by the following:

- A 6" Tamarack that bears N40°E a distance of 6 links [3.96 feet]
- A 5" Willow that bears S87°E a distance of 12 links [7.99 feet]
- A 5" Cedar that bears S47°W a distance of 26 links [17.16 feet]
- A 7" White Pine that bears N44°W a distance of 29 links [19.14 feet]

On May 4, 1984, personnel from Advance Surveying & Engineering Co., U.S.F.S. and Cass Co. made a thorough search for this corner and the above mentioned references but to no avail. However we do find a 1/2" by 13" iron pipe at the centerline - centerline of the County Road and the Township Road to the North. We remove found pipe and dig down farther, find a spike at 1.3 feet down. We do not know origin of found pipe but feel it is the best evidence for corner.

On September 5, 1984, personnel from Advance set a monument as shown on the sketch at the position of the found pipe.