

CERTIFICATE OF LOCATION OF GOVERNMENT CORNER

South 1/4 Corner of Section 29, Township 144N, Range 25W, 5th P.M.

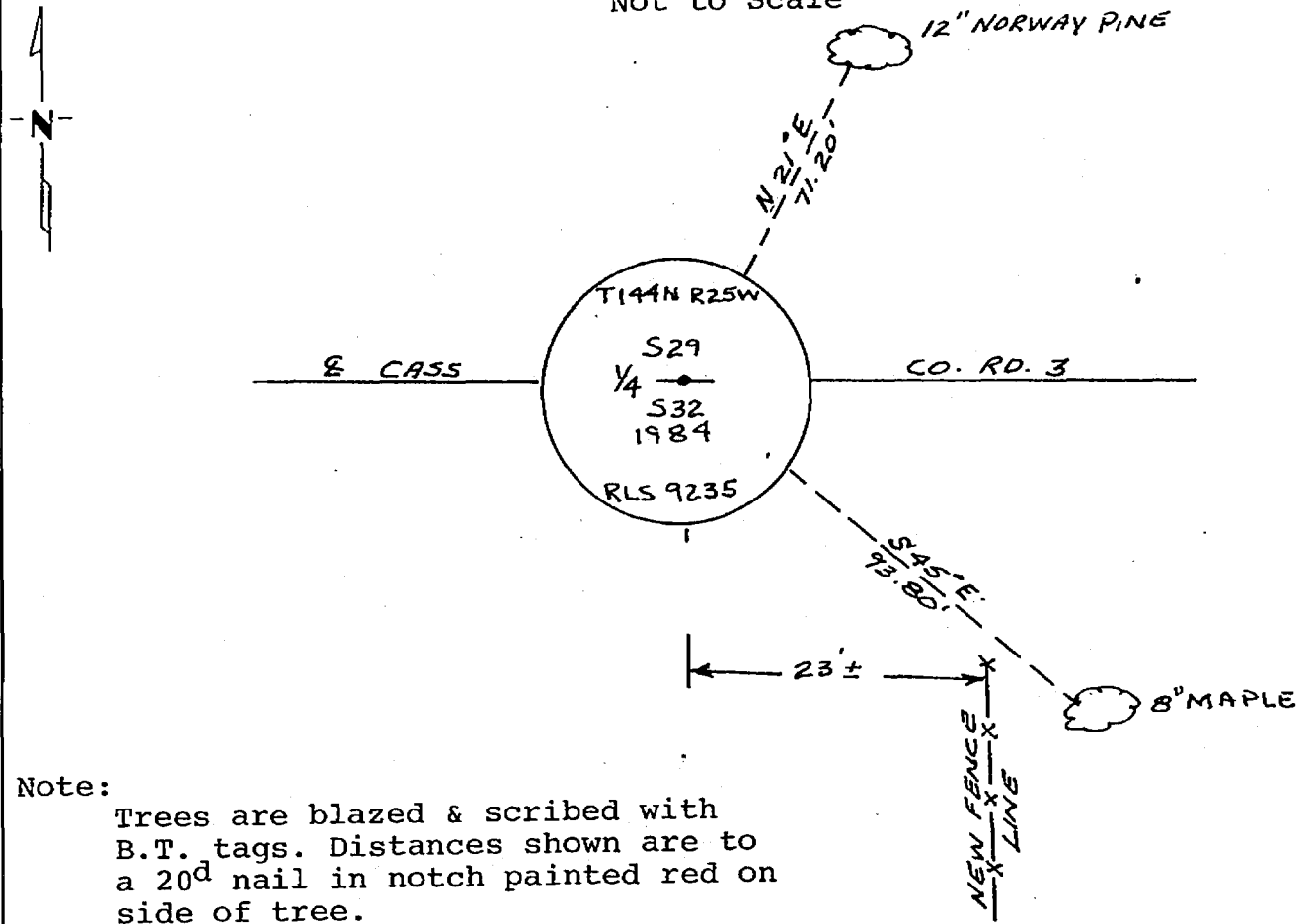
STATE OF MINNESOTA, County of Cass

At the corner location shown on the sketch:

- On _____ found a _____
DATE
- left monument as found, lowered monument, removed monument (explain)
- On 8-30-1984 placed a 5/8" x 36" aluminum rod with 3" aluminum
DATE
cap stamped as shown down .30' on E

5° East declination

SKETCH OF REFERENCE TIES
Not to Scale



Note:
Trees are blazed & scribed with
B.T. tags. Distances shown are to
a 20^d nail in notch painted red on
side of tree.

Statement of evidence relative to this corner location is on back of page.

I hereby certify that this document and the data contained herein was prepared by me or under my direct supervision.

James H. Parker 3/29/85
SIGNATURE DATE
Registration No. 9235
 Land Surveyor, Professional Engineer
 County Surveyor, County Engineer

281973
OFFICE OF THE COUNTY RECORDER
County of Cass
I hereby certify that this document was filed in the Co. Recorders office at 11:25 A .M. on the 15 day of May A.D., 1985
County Recorder Claudia Kaylor
By MS, Deputy
DOCUMENT NO. 281973

Statement of Evidence:

V7

This corner was originally established in April, 1876, by B.C. Baldwin, Deputy Surveyor. The field notes of that survey are filed in the office of the Secretary of State, St. Paul, Minnesota. Mr. Baldwin's notes state that a post was set to mark the corner and referenced by the following:

A 8" Birch that bears N62°W a distance of 25 links [16.50 feet]
A 5" Cedar that bears S60°W a distance of 21 links [13.86 feet]

On July 20, 1984, personnel from Advance Surveying & Engineering Co. made a thorough search for this corner and the above mentioned references but to no avail. This search area is determined from our field traverse.

On August 30, 1984, an additional search was made by Advance prior to reestablishing this corner at its "lost" position half way between adjacent section corners and on centerline of County Road.