

CERTIFICATE OF LOCATION OF GOVERNMENT CORNER

Southeast Corner of Section 30, Township 144N, Range 25W, 5th P.M.

STATE OF MINNESOTA, County of Cass

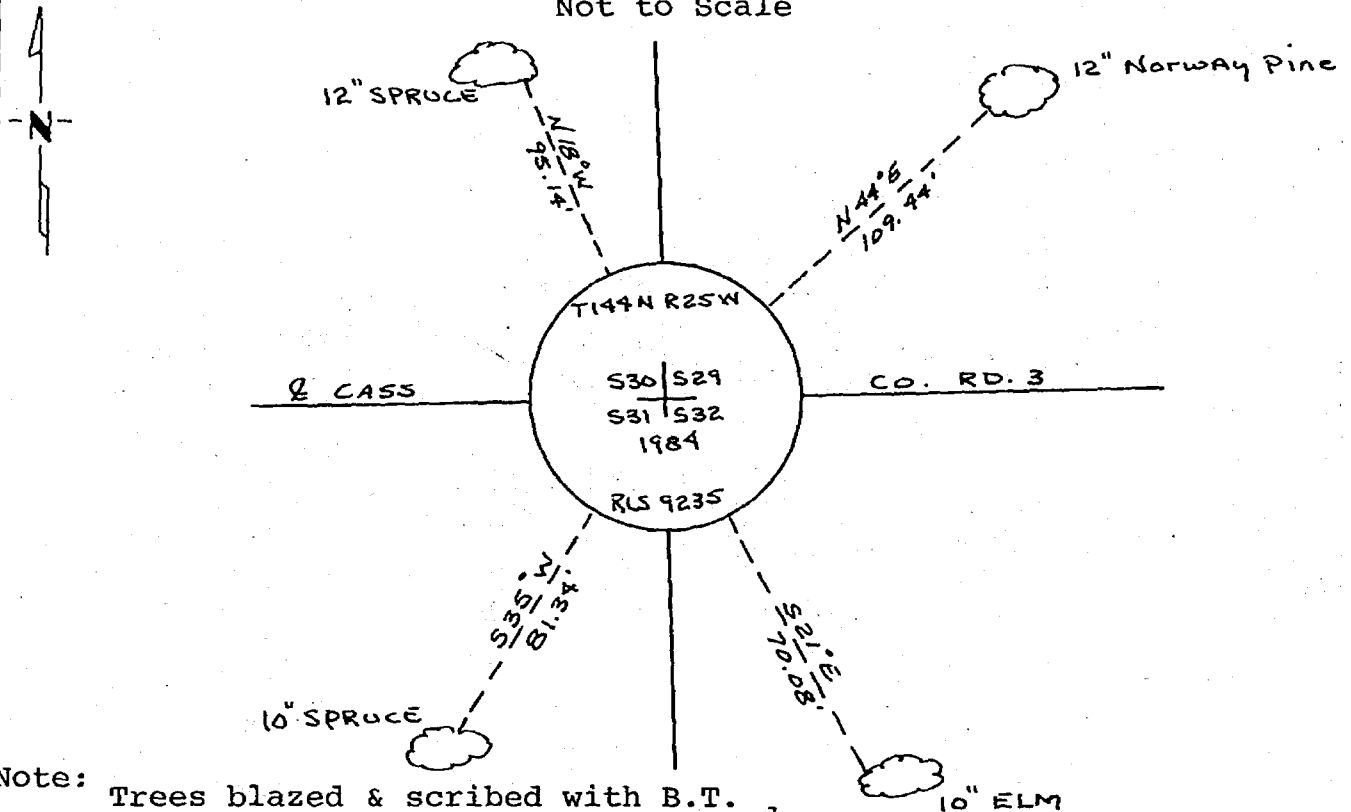
At the corner location shown on the sketch:

On 5-4-1984 found a spike down 1 foot and on the center line of
DATE
Cass County Road Number 3

left monument as found, lowered monument, removed monument (explain)

On 9-6-1984 placed a 5/8" x 36" aluminum rod with 3" aluminum
DATE
cap as shown. Down .30' at position of found spike

5° East declination SKETCH OF REFERENCE TIES
 Not to Scale



Note: Trees blazed & scribed with B.T. tag. Distances shown are to a 20d nail in notch painted red on side of tree.

Statement of evidence relative to this corner location is on back of page.

I hereby certify that this document and the data contained herein was prepared by me or under my direct supervision.

James H. Parker 4/24/85
SIGNATURE DATE

Registration No. 9235

Land Surveyor, Professional Engineer

County Surveyor, County Engineer

281972
 OFFICE OF THE COUNTY RECORDER
 County of Cass

I hereby certify that this document was filed in the Co. Recorders office at 11:20 A.M. on the 15 day of May A.D., 1985

County Recorder Claudia Kayler

By ms, Deputy

DOCUMENT NO. 281972

Statement of Evidence:

V5

This corner was originally established in April, 1876, by B.C. Baldwin, Deputy Surveyor. The field notes of that survey are filed in the office of the Secretary of State, St. Paul, Minnesota. Mr. Baldwin's notes state that a post was set to mark the corner and referenced by the following:

A 6" Lynn that bears N29°E a distance of 27 links [17.82 feet]
A 8" Cedar that bears S35°E a distance of 3 links [1.98 feet]
A 6" Cedar that bears S54°W a distance of 32 links [21.12 feet]
A 6" Cedar that bears N65°W a distance of 14 links [9.24 feet]

On September 16, 1914, James H. Flynn, Deputy Surveyor, Cass County. His notes state that he finds 2 Gov't Bearing Trees and the corner. He states 2 new references as follows:

A 14" Cedar that bears N37°W a distance of 11.9 feet
A 8" Spruce that bears S70°W a distance of 26.0 feet

This survey was to establish the centerline of Township Road. From County Survey Record Book " C ", page 547. (also on microfilm)

In 1935?, Mr. Hanson, Party Chief, with the U.S. Forest Service indicates a Forest Service location tag on post. No Date, bearing or distance to corner shown.

On May 4, 1984, personnel from Advance Surveying & Engineering Co., U.S.F.S. and Cass Co. made a thorough search for this corner and the above mentioned references but to no avail. However we do find a P.K. nail on centerline of County Road. We remove nail and dig hole approximately 8" by 15" by 18" deep. At 1.0 feet we find a spike. We also find an old Forest Service Post down and badly rotted on the North side of the Road. the location tag is gone.

On September 6, 1984, an additional search was made by Advance prior to reestablishing this corner by Obliterated methods using position of found Nails on the centerline of the County Road.