

# CERTIFICATE OF LOCATION OF GOVERNMENT CORNER

East 1/4 Corner of Section 28, Township 144N, Range 25W, 5th P.M.

STATE OF MINNESOTA, County of Cass

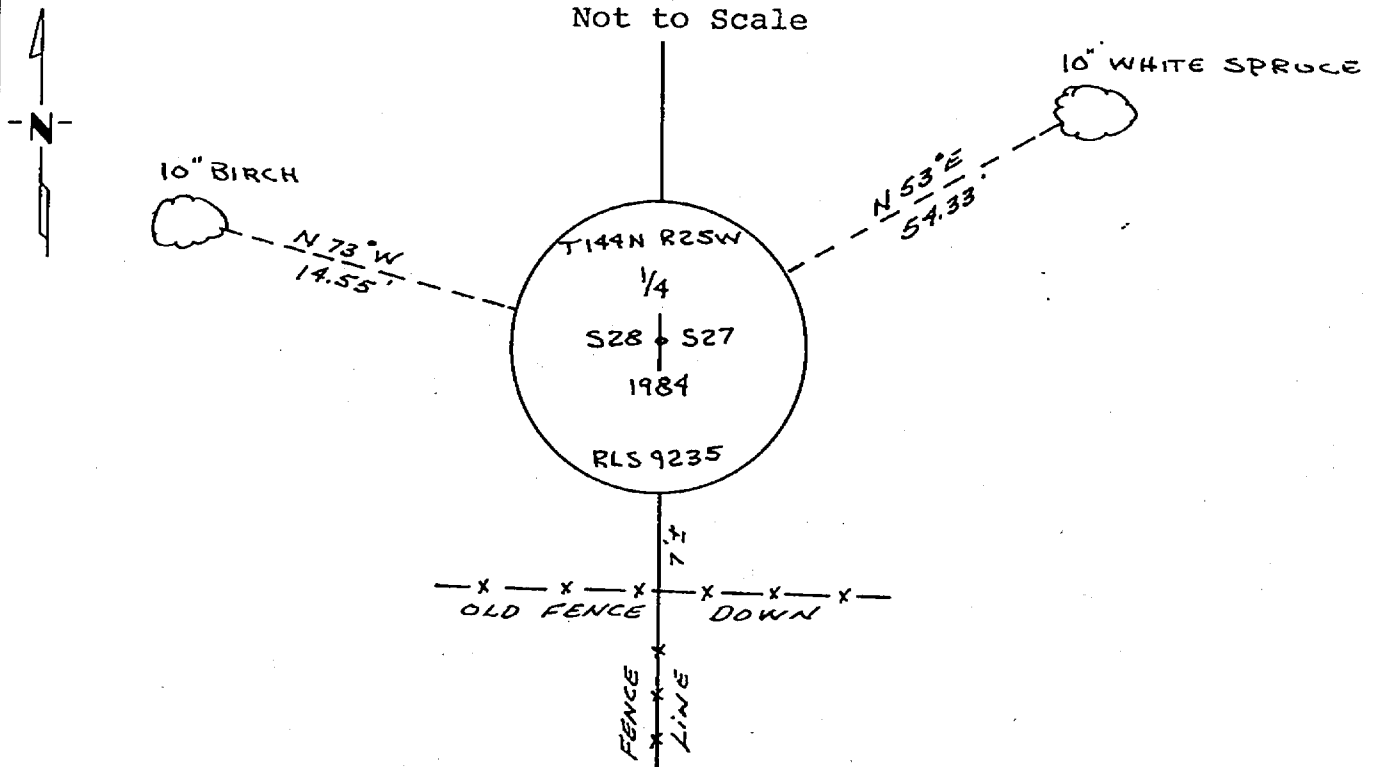
At the corner location shown on the sketch:

- On \_\_\_\_\_ found a \_\_\_\_\_  
DATE
- left monument as found,  lowered monument,  removed monument (explain)
- On 10-25-1984 placed a 2 1/2" (O.D.) x 5 feet long galvanized  
DATE iron pipe with 3" brass cap. up 1.5'

5° East declination

SKETCH OF REFERENCE TIES

Not to Scale



Note: Trees are blazed & scribed with B.T. tags. Distances shown are to a 20<sup>d</sup> nail in notch painted red in side of tree.

Statement of evidence relative to this corner location is on back of page.

I hereby certify that this document and the data contained herein was prepared by me or under my direct supervision.

James H. Parker 4/24/85  
SIGNATURE DATE  
Registration No. 9235  
 Land Surveyor,  Professional Engineer  
 County Surveyor,  County Engineer

281968  
OFFICE OF THE COUNTY RECORDER  
County of Cass

I hereby certify that this document was filed in the Co. Recorders office at 11:00 A.M. on the 15 day of May A.D., 1985  
County Recorder Charles Koyler  
By MS, Deputy  
DOCUMENT NO. 281968

Statement of Evidence:

T13

This corner was originally established in April, 1876, by B.C. Baldwin, Deputy Surveyor. The field notes of that survey are filed in the office of the Secretary of State, St. Paul, Minnesota. Mr. Baldwin's notes state that a post was set to mark the corner and referenced by the following:

- A 6" Aspen that bears N30°E a distance of 20 links [13.20 feet]
- A 7" White Pine that bears N75°W a distance of 11 links [7.26 feet]

In July, 1908, a road survey by James Flynn, Cass County Surveyor, states that he found the corner and the White Pine witness. He made new references as follows:

- A 9" White Pine that bears N5°E a distance of 33.60 feet
  - A 6" White Pine that bears S24°W a distance of 50.80 feet
- From County Survey Record Book " C", page 183.

On June 19, 1984, personnel from Advance Surveying & Engineering Co. made a thorough search for this corner and the above mentioned references but to no avail. They did find however, an old fence corner with a metal location tag attached and dated 1959. Also, there is an older, rusted tag that was obscured. We then talked to Joe Riedel about this corner. He said his father homesteaded this land when Joe was 1 year old [Joe is now 82 so around 1903]. He says that he can remember an old surveyor's post with figures cut in it when he was 15 to 20 years old. He could not recall if the post was exactly where the fence corner is, but feels certain that it was within 10 feet of that corner.

On October 25, 1984, Advance returned to this corner position and set a monument as shown on the sketch. This corner position was reestablished by obliterated methods, by extending the existing north and south fence and by prorata proportion of the distance between the Southwest corner of Section 27 and the Northwest corner of Section 22 for a North and South position.