

# CERTIFICATE OF LOCATION OF GOVERNMENT CORNER

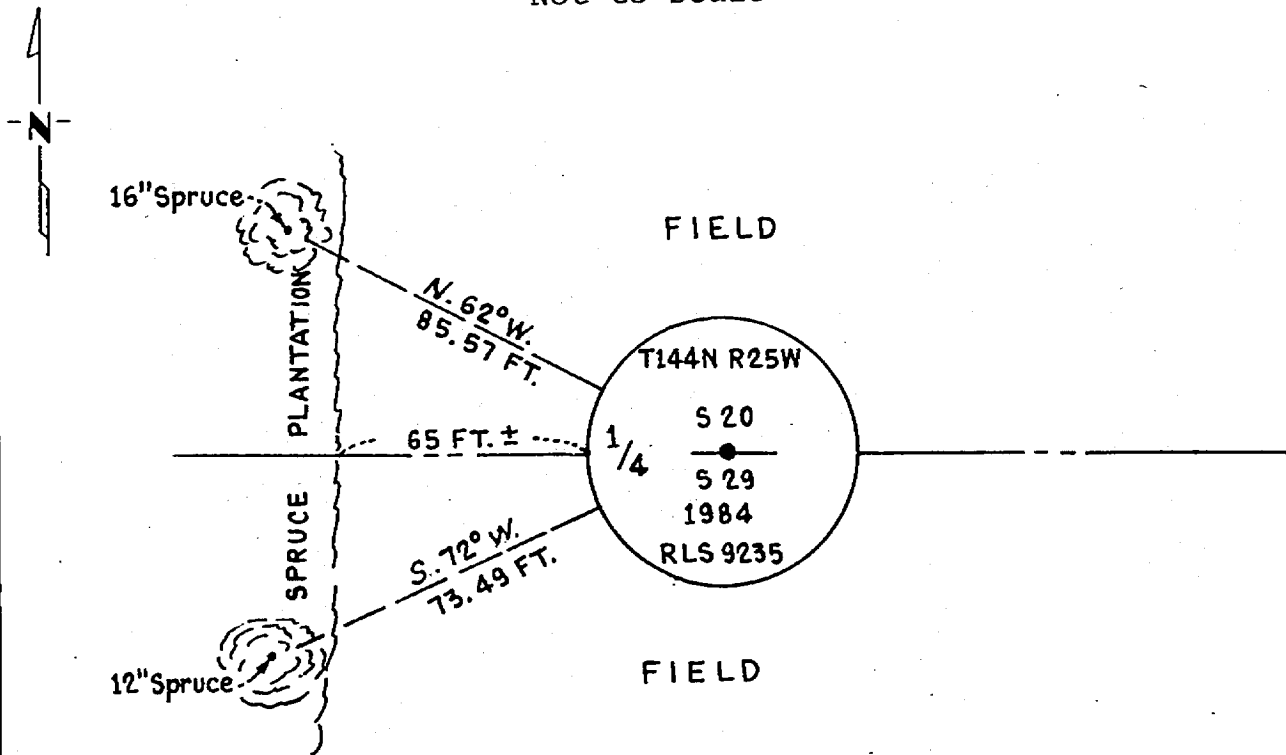
North 1/4 Corner of Section 29, Township 144N, Range 25W, 5th P.M.

STATE OF MINNESOTA, County of Cass

At the corner location shown on the sketch:

- On \_\_\_\_\_ found a \_\_\_\_\_  
DATE
- left monument as found,  lowered monument,  removed monument (explain)
- On 10-3-1984 placed a 2 1/2" X 5 feet long galvanized iron pipe  
DATE  
with 3" brass cap. Up 1.5 feet

5° East declination SKETCH OF REFERENCE TIES  
Not to Scale



Note: trees are blazed and scribed with B.T. Tags. Distances shown are to a 20<sup>d</sup> nail in notch painted red on side of tree.

Statement of evidence relative to this corner location is on back of page.

I hereby certify that this document and the data contained herein was prepared by me or under my direct supervision.

James H. Parker 3/29/85  
SIGNATURE DATE

Registration No. 9235

Land Surveyor,  Professional Engineer

County Surveyor,  County Engineer

OFFICE OF THE COUNTY RECORDER

County of Cass

I hereby certify that this document was filed in the Co. Recorders office at 10:00 A.M. on the 15 day of May A.D., 1985

County Recorder Claudine Kayler

By MS, Deputy

DOCUMENT NO. 281957

Statement of Evidence:

R7

This corner was originally established in April, 1876, by B.C. Baldwin, Deputy Surveyor. The field notes of that survey are filed in the office of the Secretary of State, St. Paul, Minnesota. Mr. Baldwin's notes state that a post was set to mark the corner and referenced by the following:

A 18" Cedar that bears N10°E a distance of 4 links [2.64 feet]  
A 6" Ash that bears S16°W a distance of 36 links [23.76 feet]

On June 5, 1984, personnel from Advance Surveying & Engineering Co. made a thorough search for this corner and the above mentioned references but to no avail. This area is now a Hay field.

On October 3, 1984, an additional search was made by Advance prior to reestablishing this corner on line between the Northeast corner of Section 30 and the Northeast corner of Section 29 and the distance is prorated between the Northeast corner of Section 30 and the North Quarter corner of Section 26.