

# CERTIFICATE OF LOCATION OF GOVERNMENT CORNER

Northwest Corner of Section 14, Township 144 N., Range 25 W., 5th P.M.

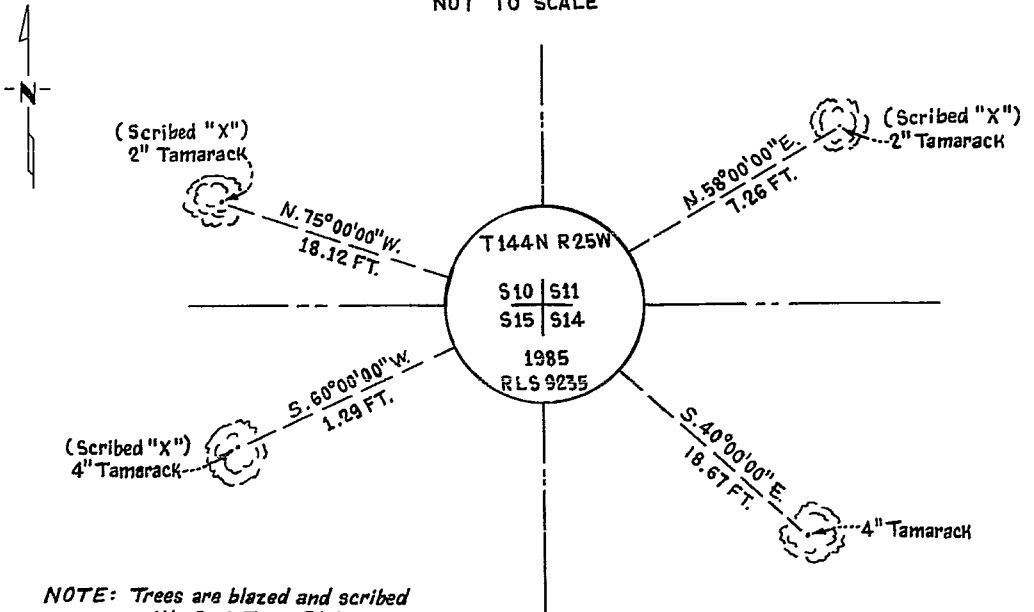
STATE OF MINNESOTA, County of Cass

At the corner location shown on the sketch:

- On \_\_\_\_\_ found a \_\_\_\_\_  
DATE
- left monument as found,  lowered monument,  removed monument (explain)
- On 1-10-1985 placed a 5/8" by 10 feet long Aluminum Rod with 3" Aluminum Cap  
DATE  
stamped as shown up 1.0 foot.

5° EAST Declination

SKETCH OF REFERENCE TIES  
NOT TO SCALE



**NOTE:** Trees are blazed and scribed with B. T. Tags. Distances shown are to a 20<sup>d</sup> nail in notch painted red on side of tree.

Statement of evidence relative to this corner location is on back of page.

I hereby certify that this document and the data contained herein was prepared by me or under my direct supervision.

James H. Parker 3/29/85  
SIGNATURE DATE

Registration No. 9235

Land Surveyor,  Professional Engineer

County Surveyor,  County Engineer

281711

OFFICE OF THE COUNTY RECORDER  
 County of Cass

I hereby certify that this document was filed in the Co. Recorders office at 2:35 P.M. on the 3 day of May A.D., 1985

County Recorder Claudia Kaylor  
 By MS, Deputy

DOCUMENT NO. 281711

Statement of Evidence:

J17

This corner was originally established in April, 1876, by B.C. Baldwin, Deputy Surveyor. The field notes of that survey are filed in the office of the Secretary of State, St. Paul, Minnesota. Mr. Baldwin's notes state that a post was set to mark the corner and referenced by the following:

A 4" Tamarack that bears N68°E a distance of 23 links [15.18 feet]  
A 5" Tamarack that bears S32°E a distance of 17 links [11.22 feet]  
A 5" Tamarack that bears S34°W a distance of 84 links [55.44 feet]  
A 5" Tamarack that bears N74°W a distance of 44 links [29.04 feet]

In 1900 a map of survey by the Corps of Engineers shows that they found the corner.

On August 3, 1984, personnel from Advance Surveying & Engineering Co. made a thorough search for this corner and the above mentioned references but to no avail.

On January 10, 1985, an additional search was made by Advance prior to reestablishing this corner by Obliterated methods by using coordinate position determined from Corps of Engineers survey done in 1900.