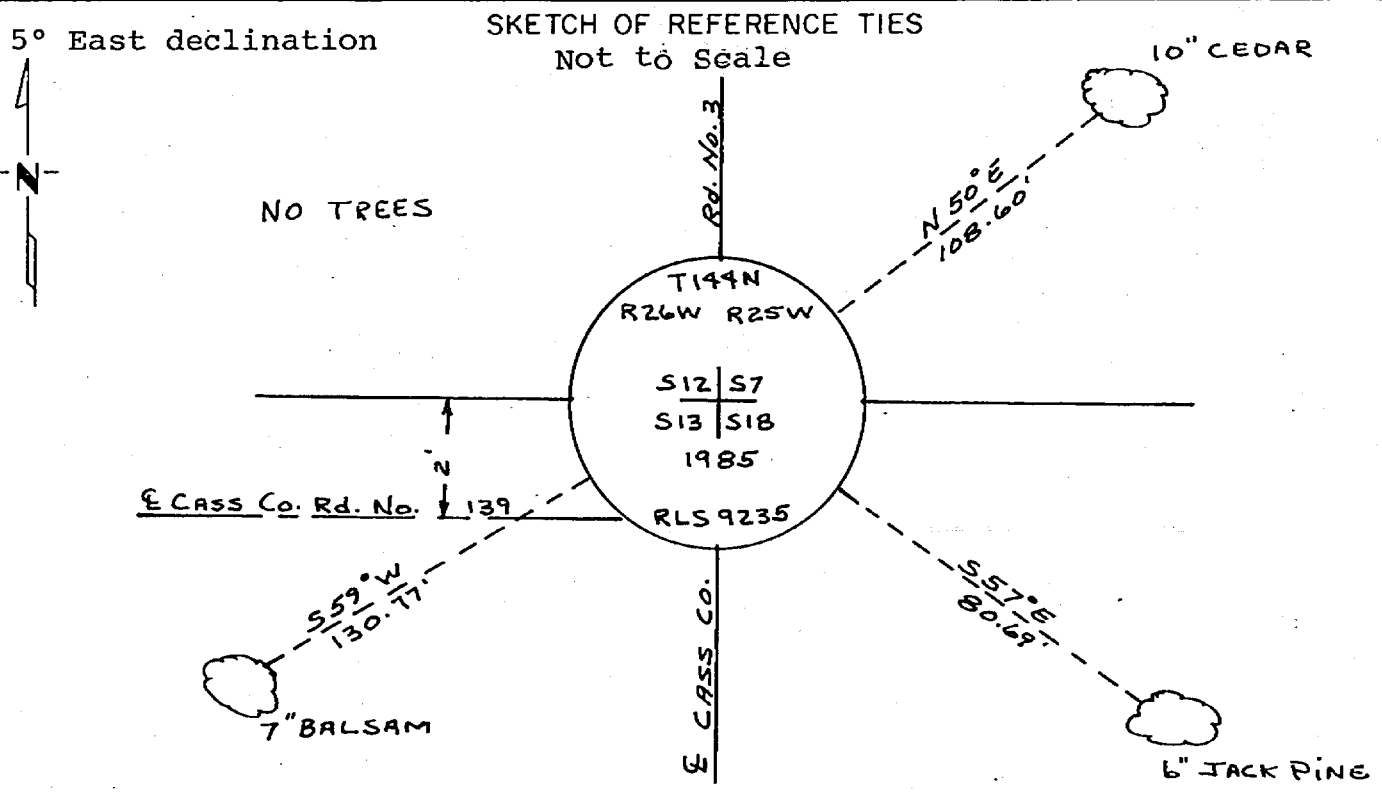


CERTIFICATE OF LOCATION OF GOVERNMENT CORNER

Northwest Corner of Section 18, Township 144N, Range 25W, 5th P.M.
STATE OF MINNESOTA, County of Cass

At the corner location shown on the sketch:

- On 5-3-84 found a 1/2" x 8" long bolt- down 3.8 feet standing
straight up
 left monument as found, lowered monument, removed monument (explain)
- On 1-21-85 placed a 5/8" x 36" aluminum rod with 3" aluminum
cap stamped as shown. Down .30'



NOTE :
Trees are blazed & scribed with B.T. tag
Distances shown are to a 20^d nail in notch
painted red on side of tree.

Statement of evidence relative to this corner location is on back of page.

I hereby certify that this document and the data contained herein was prepared by me or under my direct supervision.

James H. Parks 4/24/85
SIGNATURE DATE

Registration No. _____

Land Surveyor, Professional Engineer
 County Surveyor, County Engineer

281679

OFFICE OF THE COUNTY RECORDER
County of Cass

I hereby certify that this document was filed in the Co. Recorders office at 4:22 P.M. on the 2 day of May A.D., 19 85

County Recorder Claudia Kayler
By MS, Deputy

DOCUMENT NO. 281679

Statement of Evidence:

J1

This corner was originally established in July 1, 1873, by P.H. Congar, Deputy Surveyor. The field notes of that survey are filed in the office of the Secretary of State, St. Paul, Minnesota. Mr. Congar's notes state that a post was set to mark the corner and referenced by the following:

A 15" Norway Pine that bears N30°W a distance of 15 links [9.90 feet]
A 8" Cedar that bears S74°E a distance of 11 links [7.26 feet]
A 5" Birch that bears S3°W a distance of 12 links [7.92 feet]
A 5" Cedar that bears N41°E a distance of 15 links [9.90 feet]

In 1900, a map of survey by the Corps of Engineers indicates that they found the corner.

On January 29, 1914, John W. Curo notes indicate a new corner being set and dated January 5, 1914. His notes say corner is marked wrong, no mention of references. From County Survey Record Book " B ", pages 413 to 417.

In 1919, James Flynn, Deputy Surveyor, set a 2 1/2" by 30" iron monument in center of road on Range line. From County Survey Record Book " C ", page 178.

On March 7, 1935, U.S. Forest Service record states that they found a Bearing Tree in good condition being a 16" Elm, Southeast of the corner a distance of 50 links [33.00 feet]

On May 3, 1984, personnel from Advance Surveying & Engineering Company, U.S.F.S. and the Cass County Surveyors Office search for this corner position which we determine from our field traverse. With the use of Backhoe we dig a 8' by 10' by 4' deep area in roadbed which is approximately the centerline-centerline position of County Roads. Items recovered are as follows:

an 80d spike down 1.7 feet, 4" into original soil
a piece of a cast iron wagon axel 3" diam. down 3.5 feet & stove leg,
1/2" by 8" bolt down 3.8 feet standing straight up also a stake
pocket from a old wagon or dray and another stove leg. All items
recovered were in an area 4" to 5" in diameter, except for the
first spike which was about 2 feet South. We believe bolt to be
best evidence of corner position.

On January 21, 1985, personnel from Advance and the U.S.F.S. set a monument as shown on the sketch.