

CERTIFICATE OF LOCATION OF GOVERNMENT CORNER

West 1/4 Corner of Section 9, Township 144N, Range 25W, 5th P.M.

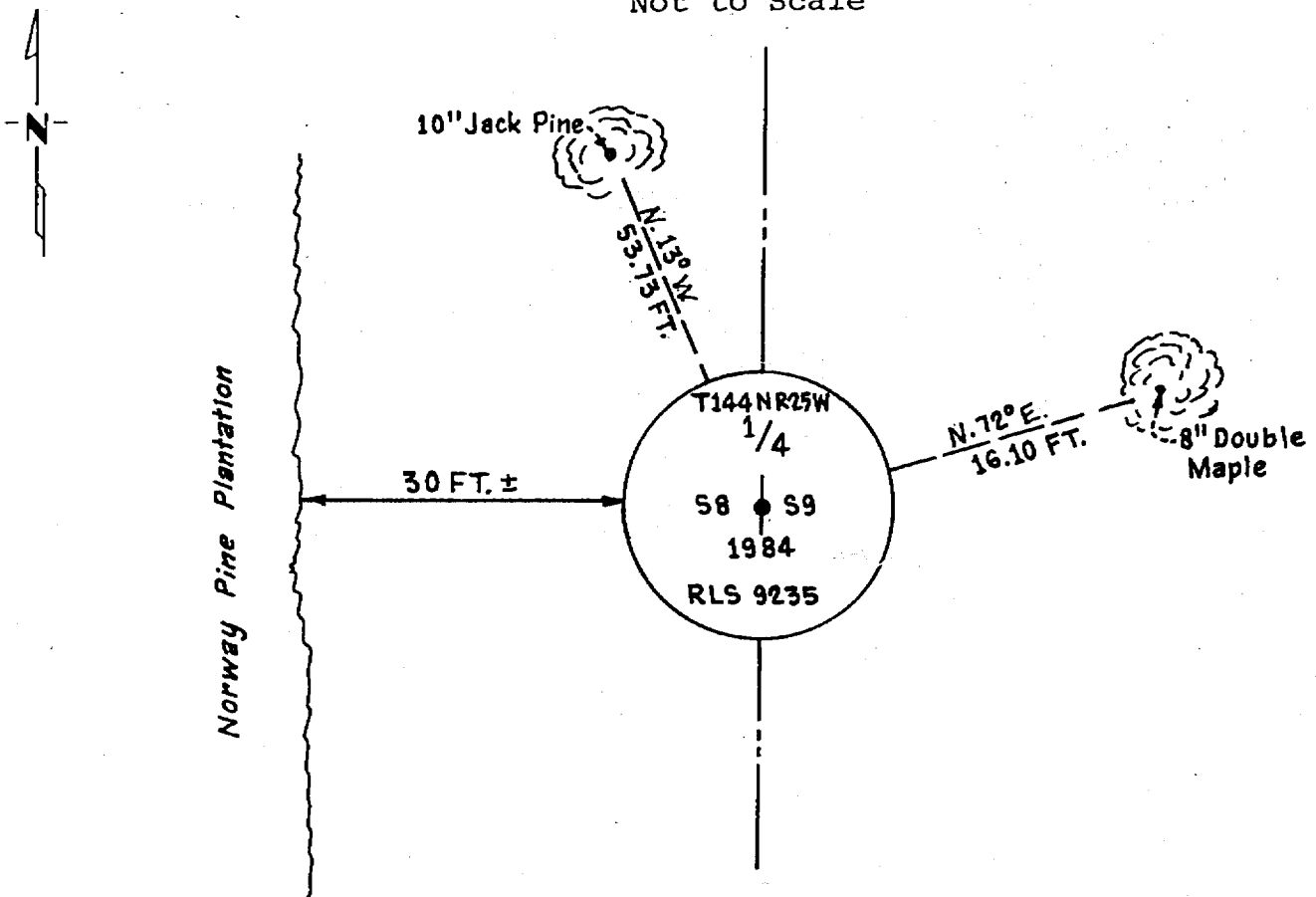
STATE OF MINNESOTA, County of Cass

At the corner location shown on the sketch:

- On _____ found a _____
DATE
- left monument as found, lowered monument, removed monument (explain)
- On 11-2-1984 placed a 2 1/2" x 5 foot long galvanized iron pipe
DATE with 3" brass cap - up 1.5 feet

5° East declination

SKETCH OF REFERENCE TIES
Not to Scale



Statement of evidence relative to this corner location is on back of page.

I hereby certify that this document and the data contained herein was prepared by me or under my direct supervision.

James H. Parker 3/29/85
SIGNATURE DATE

Registration No. 9235

Land Surveyor, Professional Engineer

County Surveyor, County Engineer

281674
OFFICE OF THE COUNTY RECORDER
County of Cass

I hereby certify that this document was filed in the Co. Recorders office at 4:05 P. .M. on the 2 day of May A.D., 1985

County Recorder Catherine Kaylor
By MS, Deputy

DOCUMENT NO. 281674

Statement of Evidence:

G9

This corner was originally established in April, 1876, by B.C. Baldwin, Deputy Surveyor. The field notes of that survey are filed in the office of the Secretary of State, St. Paul, Minnesota. Mr. Baldwin's notes state that a post was set to mark the corner and referenced by the following:

A 10" Aspen that bears N70°E a distance of 30 links [19.80 feet]
A 8" Birch that bears S82°W a distance of 16 links [10.56 feet]

On June 26, 1984, personnel from Advance Surveying & Engineering Co. made a thorough search for this corner and the above mentioned references but to no avail.

On November 2, 1984, an additional search was made by Advance prior to reestablishing this corner at its "lost" position half way and on line between adjacent Section corners.