

# CERTIFICATE OF LOCATION OF GOVERNMENT CORNER

South Quarter \_\_\_\_\_ Corner of Section 8, Township 141N, Range 31W, 5th P.M.

STATE OF MINNESOTA, County of Cass

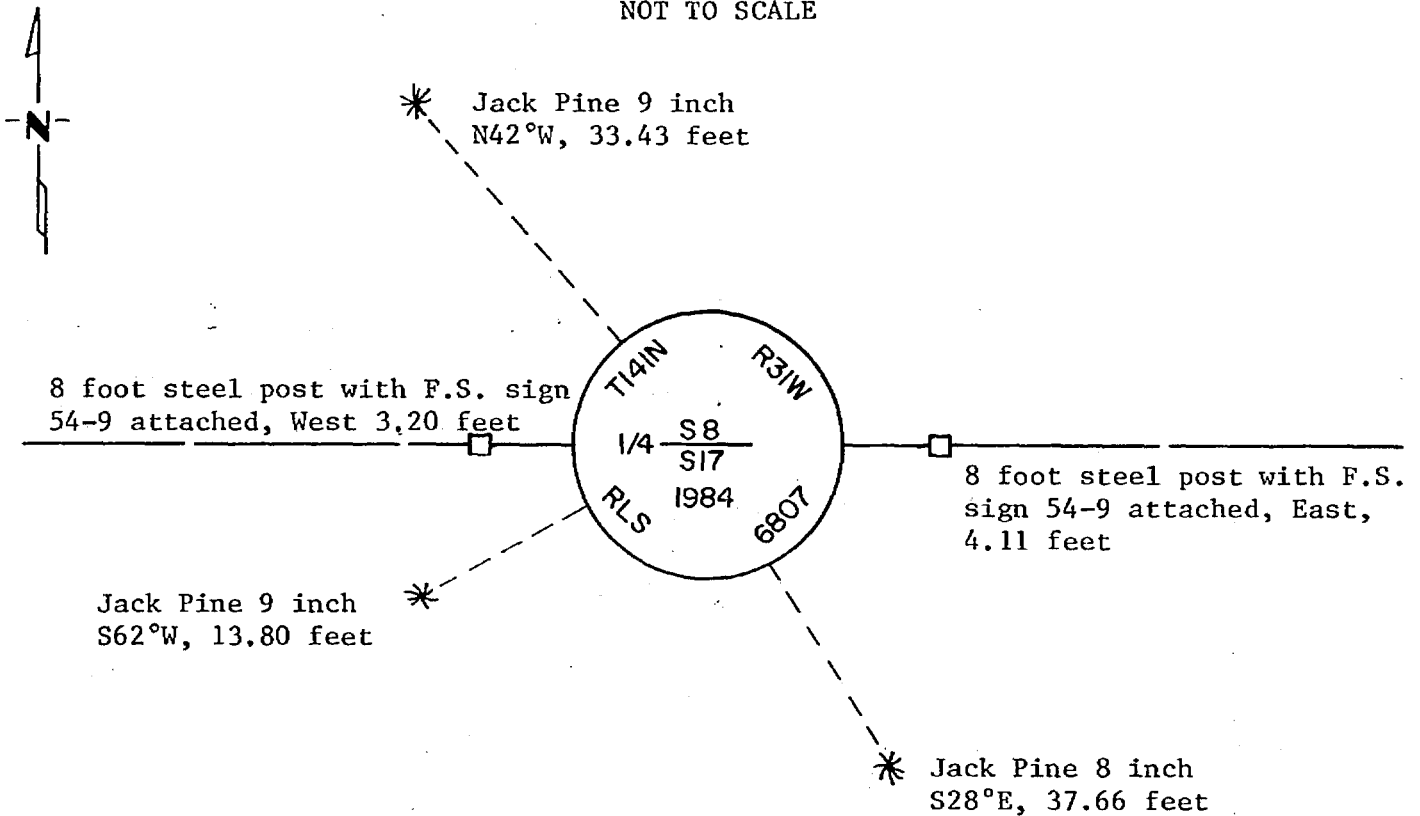
At the corner location shown on the sketch:

- On \_\_\_\_\_ found a \_\_\_\_\_  
DATE
- left monument as found,  lowered monument,  removed monument (explain)
- On 12-4-84 placed a 2½ inch (O.D.) by 5 foot long iron pipe with a 3 inch diameter brass cap, stamped as shown, up 1.0 feet.  
DATE

Declination: 6° East

### SKETCH OF REFERENCE TIES

NOT TO SCALE



NOTE: All bearing trees are painted red and marked with F.S. sign No. 54-3 with a nail in base, double blazed and scribed.

Statement of evidence relative to this corner location is on back of page.

I hereby certify that this document and the data contained herein was prepared by me or under my direct supervision.

William D. Osmond 2-1-85  
SIGNATURE DATE

Registration No. 6807

- Land Surveyor,  Professional Engineer
- County Surveyor,  County Engineer

280564  
OFFICE OF COUNTY RECORDER

County of Cass  
I hereby certify that this document was filed in the Co. Recorder's office at 10:00 A.M. on the 27 day of February A.D., 1985  
County Recorder Claudia Kogler  
By MS, Deputy

DOCUMENT NO. 280564

Statement of Evidence: South Quarter Corner, Section 8, Township 141 North,  
Range 31 West, 5th Principal Meridian.

- 1873 P.H. Conger, U.S. Deputy Surveyor, set a post for this Quarter corner in his subdivision of the Township between August 5, 1873 and August 30, 1873. As references he scribed:
- |           |         |       |          |              |
|-----------|---------|-------|----------|--------------|
| Jack Pine | 12 inch | N23°E | 90 links | (59.40 feet) |
| Jack Pine | 10 inch | S86°W | 22 links | (14.52 feet) |
- 1984 Kelly M. Booge, under F.S. Contract No. 53-6392-4-00996, made a thorough search for physical evidence of this corner on October 4, none was found. He returned on December 4, and searched for evidence on the corner position but found no further evidence. He then set a monument in the lost position, with ties as shown on sketch, midpoint and on line between the Southwest and Southeast Section corners of Section 8.

Kelly M. Booge is an employee of Okerman Surveying, Inc.