

CERTIFICATE OF LOCATION OF GOVERNMENT CORNER

North Quarter _____ Corner of Section 9, Township 141N, Range 31W, 5th P.M.

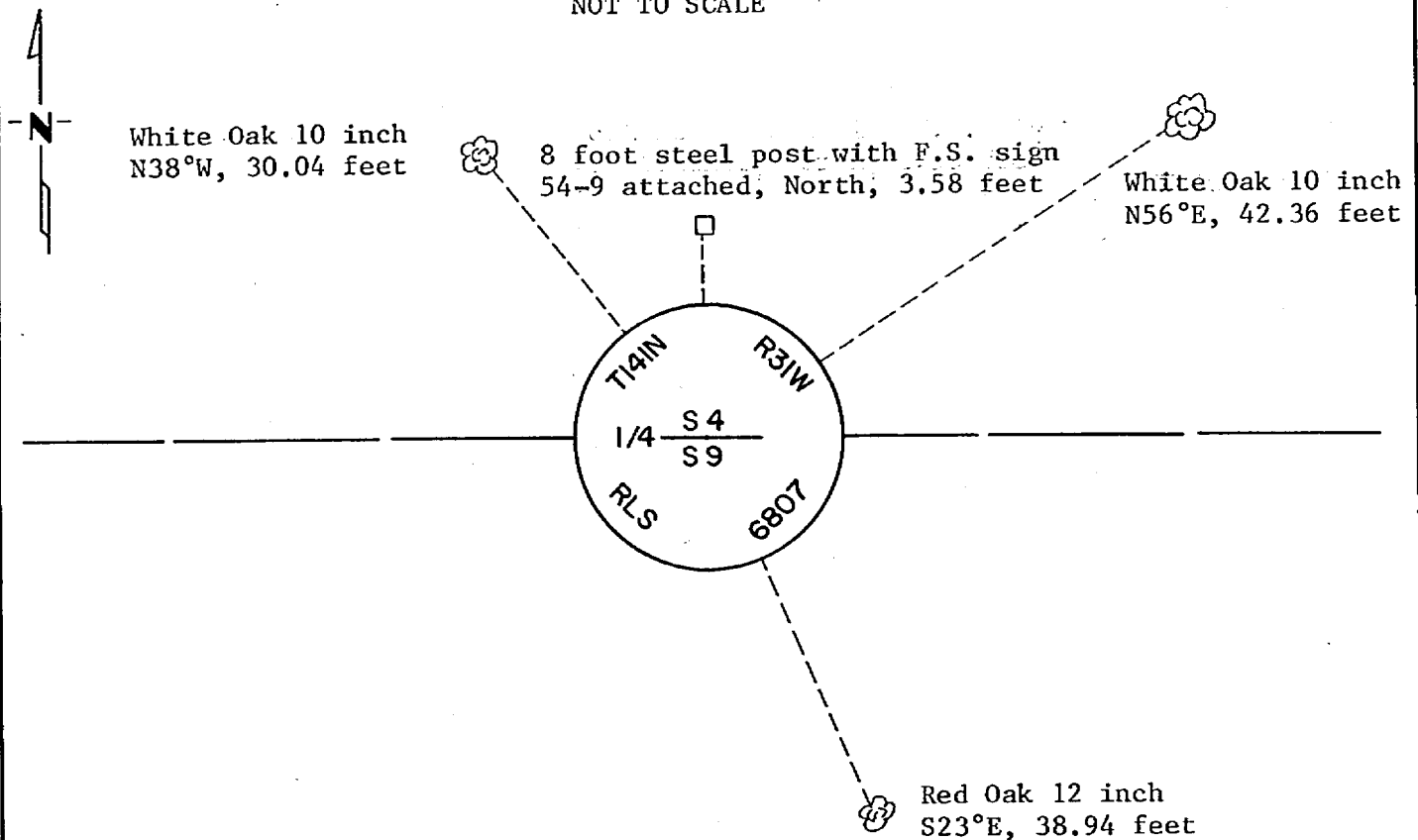
STATE OF MINNESOTA, County of Cass

At the corner location shown on the sketch:

- On _____ found a _____
DATE
- left monument as found, lowered monument, removed monument (explain)
- On 12-20-84 placed a 2 1/2 inch (O.D.) x 5 foot long iron pipe with 3 inch
DATE brass cap, stamped as shown, up 1.0 foot.

Declination: 6° East

SKETCH OF REFERENCE TIES NOT TO SCALE



NOTE: All bearing trees are painted red and marked with F.S. sign No. 54-3 with a nail in base, double blazed and scribed.

Statement of evidence relative to this corner location is on back of page.

I hereby certify that this document and the data contained herein was prepared by me or under my direct supervision.

William D. Olson 2-1-85
SIGNATURE DATE

Registration No. 6807

- Land Surveyor, Professional Engineer
- County Surveyor, County Engineer

280557
OFFICE OF COUNTY RECORDER
County of Cass
I hereby certify that this document was filed in the Co. Recorder's office at 9:25 A.M. on the 27 day of February A.D., 1985
County Recorder Clouline Kayler
By MS, Deputy
DOCUMENT NO. 280557

Statement of Evidence: North Quarter Corner of Section 9, Township 141 North,
Range 31 West, 5th Principal Meridian.

- 1873 P.H. Conger, U.S. Deputy Surveyor, set a post for this Quarter Corner in his subdivision of the Township between August 5, 1873 and August 30, 1873. As references he scribed:
- | | | | |
|-------------|---------|-------|-----------------------|
| White Pine | 30 inch | N85°W | 37 links (24.42 feet) |
| Norway Pine | 30 inch | S55°E | 7 links (4.62 feet) |
- 1925 J. Greene, Cass County Surveyor, found no evidence of corner. He set a monument in the lost position, on line and at a split between Section corners. No ties mentioned.
- 1929 Minnesota Highway Department right of way map indicated a 2 inch iron pipe with cap found in place at approximate corner position. No ties found.
- 1984 Kelly M. Booge, under F.S. Contract No. 53-6392-4-00996, made a thorough search for physical evidence of this corner on August 30. He found a 2 inch iron pipe with cap but no BT's. Local surveyors were contacted as to any history of this pipe but no response from them. Measurements taken between found monuments along the North line of Section 9 showed discrepancies greater than was acceptable for the positions where the monuments were found, compared with distances between other found monuments in the same survey by Greene. Booge returned on December 20, and searched for evidence on the corner position but found no further evidence. He then set a monument in the lost position, with ties as shown on the sketch, proportionate distance and on a straight line between adjacent corners.

Kelly M. Booge is an employee of Okerman Surveying, Inc.