

CERTIFICATE OF LOCATION OF GOVERNMENT CORNER

SOUTHEAST Corner of Section 33, Township 141 N, Range 31 W, 5th P.M.

STATE OF MINNESOTA, County of Cass

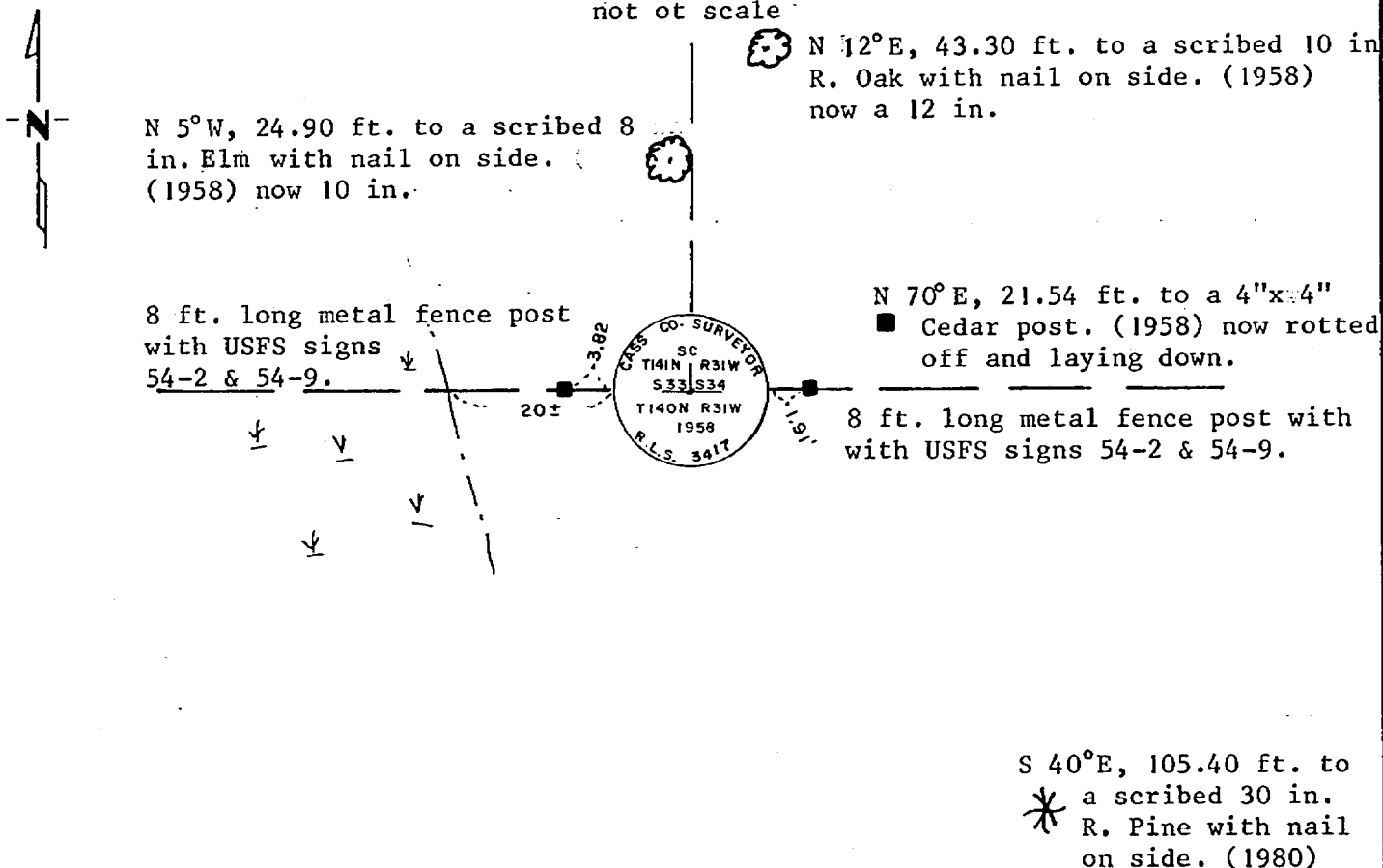
At the corner location shown on the sketch:

- On 9/21/84 found a 2½ inch by 5 foot galvanized pipe with 3 inch
DATE
brass cap, stamped as shown, up 2½ inches.
- left monument as found, lowered monument, removed monument (explain)
- On _____ placed a _____
DATE

5¼° East declination

SKETCH OF REFERENCE TIES

not at scale



Statement of evidence relative to this corner location is on back of page.

I hereby certify that this document and the data contained herein was prepared by me or under my direct supervision.

Anthony E. Kerish 12/12/84
SIGNATURE DATE

Registration No. 12266

- Land Surveyor, Professional Engineer
- County Surveyor, County Engineer

OFFICE OF THE REGISTER OF DEEDS

County of Cass

I hereby certify that this document was filed in the Reg. of Deeds office at 10:45 A.M. on the 25 day of February A.D., 1985

Register of Deeds Clairline Kayler

By ms County Recorder, Deputy

DOCUMENT NO. 280504

Statement of Evidence:

SOUTHEAST CORNER OF SECTION 33, TOWNSHIP 141 NORTH,
RANGE 31 WEST OF THE 5th PRINCIPAL MERIDIAN.

1864 - The original Public Land Survey was run by Johnson and Thornson. Set a wood post to mark corner and recorded two bearing trees as accessories:

8" W. Pine N 11°W 59 links (38.94)
12" J.Pine N 42°E 18 links (11.88)

1928 - John Greene Cass County Surveyor subdivided Sections 34 and 35. County Resurvey Plat "E - 55" set an iron monument.

1940 - John Curo corner established from original Government B.T.'s Record Book D, page 241.

1942 - accessories - W. Birch 5" N 71°25' E 25.10 ft., Poplar 8" S 7°20' W 36.60 ft., W. Birch 6" N 14°45' W 87.10 ft.

1958 - Harold Curo Cass County Surveyor found 2" x 30" boiler flue set by John Greene in 1928 and checked by Cass County Surveyor John Curo in 1950. replaced 2" iron with a 2-3/4" x 60" galvanized iron with 3 inch stamped brass capped monument and recorded new accessories: Certificate filed 3/22/60 Doc. # 3, in book of Corner Certificates in Cass County Recorder's office.

8" Ash N 04°30' W 24.90 ft.
10" R. Oak N 12°06' E 43.30 ft.
4" x 4" Cedar post N 70°40' E 21.54 ft.

1984 - Kerick Surveying, Inc., Bemidji, MN. ran the South line of Section 33 for the U.S. Forest Service. Found the 3 inch stamped brass capped monument set by Curo in 1958 along with his corner accessories. I accepted this monument as a perpetuation of the original corner. A bearing tree was marked in 1980 by U.S.F.S. remarked corner accessories that appear on this certificate.