

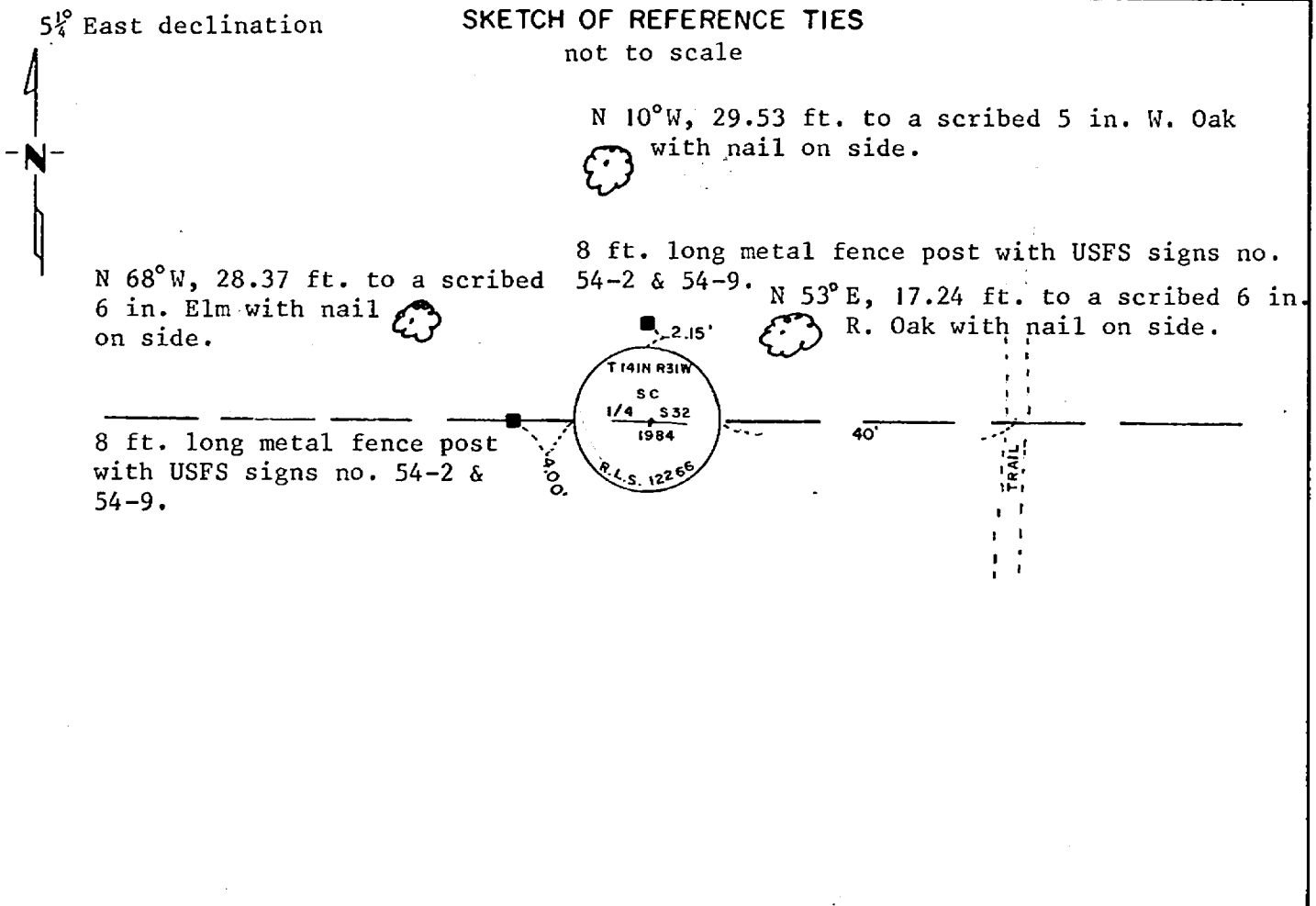
CERTIFICATE OF LOCATION OF GOVERNMENT CORNER

SOUTH QUARTER Corner of Section 32, Township 141 N, Range 31 W, 5th P.M.

STATE OF MINNESOTA, County of Cass

At the corner location shown on the sketch:

- On 9/20/84 found a 2 inch iron pipe
DATE
- left monument as found, lowered monument, removed monument (explain)
- On 11/29/84 placed a 2½ inch by 5 foot long galvanized pipe with 3 inch
DATE brass cap, stamped as shown, up 18 inches.



Statement of evidence relative to this corner location is on back of page.

I hereby certify that this document and the data contained herein was prepared by me or under my direct supervision.

Anthony E. Kerich 12/12/84
SIGNATURE DATE

Registration No. 12266

Land Surveyor, Professional Engineer

County Surveyor, County Engineer

28050

OFFICE OF THE REGISTER OF DEEDS
 County of Cass

I hereby certify that this document was filed in the Reg. of Deeds office at 10:25 A.M. on the 25 day of February A.D., 1985

Register of Deeds Clairine Kayler
County Record

By ms, Deputy

DOCUMENT NO. 28050

Statement of Evidence:

SOUTH QUARTER CORNER OF SECTION 32, TOWNSHIP 141 NORTH,
RANGE 31 WEST OF THE 5th PRINCIPAL MERIDIAN:

1864 - The original Public Land Survey was run by Johnson and Thornton. Set a wood post to mark the corner and recorded two bearing trees as accessories:

6" W. Birch N 31°W 9 links (5.94')
6" W. Birch N 42°E 10 links (6.60')

1963 - R.H. McDonald found a 2" iron pipe marking the corner also found a Forest Service tag on a 12 inch aspen from which corner bears S 32 E 23 links (15.18'). tag has initials J.E.M. 1949 on it.

1984 - Kerick Surveying, Inc., Bemidji, MN. subdivided Section 32 for the U.S. Forest Service. Found a 2" iron marking the corner. Assuming this is the same corner found in 1963. I contacted Walter Curo R.L.S. from Hackensack, MN. he did a survey in Section 32 he stated that he had records from his grandfather John Curo that he set the 2" iron from evidence he found back around 1910. I accepted this monument as a perpetuation of the original corner. John Curo's records are not available to me so I am not disputing the position for the corner, also there are no other survey records available. Found no other accessories to the corner. Set new corner accessories that appear on this certificate. I set a U.S.F.S. 3 inch brass capped monument in place of the 2" iron and reset the 2" iron on the North side of monument.