

CERTIFICATE OF LOCATION OF GOVERNMENT CORNER

WITNESS CORNER TO S.W. Corner of Section 31, Township 141 N, Range 31 W, 5th P.M.

STATE OF MINNESOTA, County of Cass

At the corner location shown on the sketch:

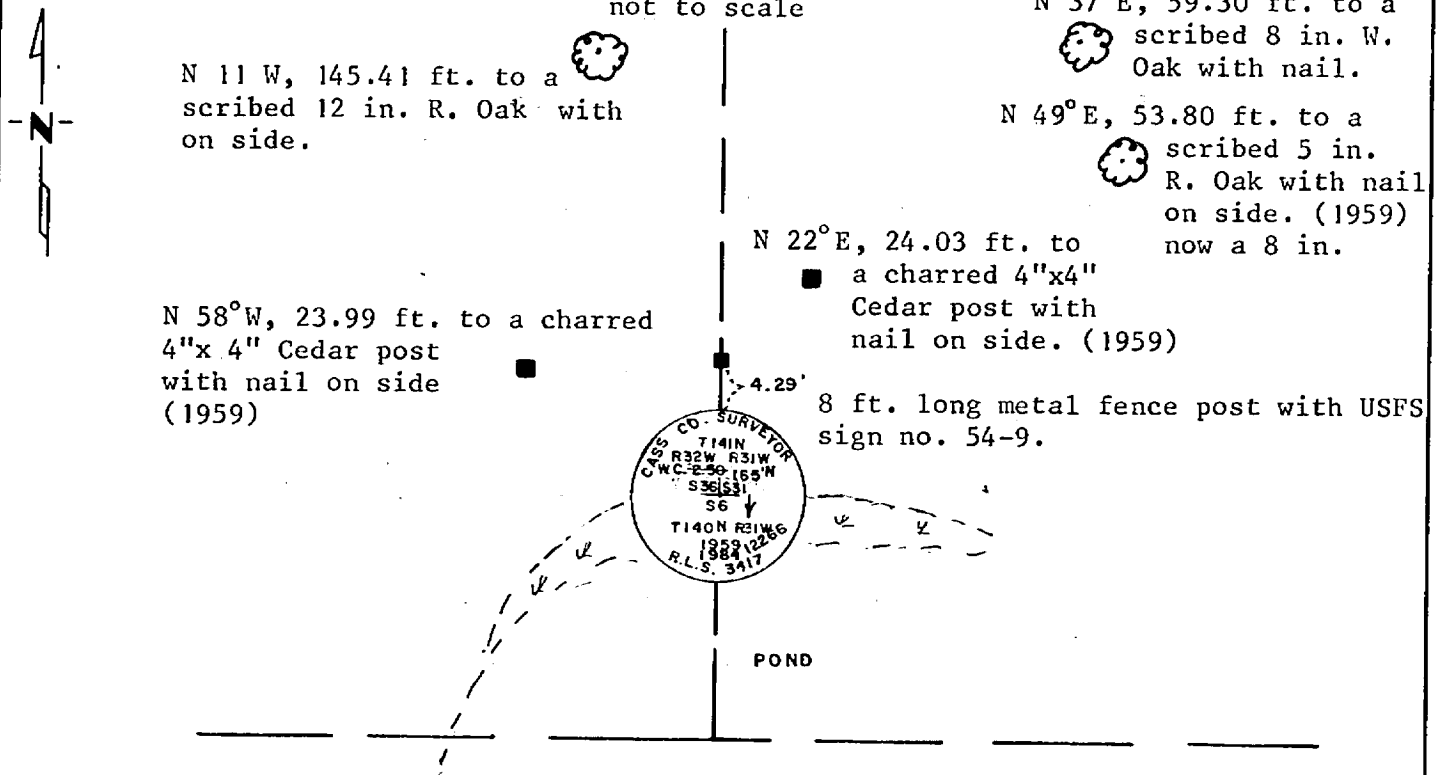
On 9/6/84 found a 2 1/2 inch by 5 foot long galvanized pipe with 3 inch brass cap, stamped as shown, up 10 inches.

left monument as found, lowered monument, removed monument (explain)

On _____ placed a _____

5 1/4° East declination

SKETCH OF REFERENCE TIES not to scale



Statement of evidence relative to this corner location is on back of page.

I hereby certify that this document and the data contained herein was prepared by me or under my direct supervision.

Anthony E. Keich 12/12/84
SIGNATURE DATE

Registration No. 12266

Land Surveyor, Professional Engineer

County Surveyor, County Engineer

OFFICE OF THE REGISTER OF DEEDS
County of Cass

I hereby certify that this document was filed in the Reg. of Deeds office at 10:10 A.M. on the 25 day of February A.D., 1985

Register of Deeds Claudine Kayler
By MS Deputy

DOCUMENT NO. 280497

Statement of Evidence:

WITNESS CORNER TO
SOUTHWEST CORNER OF SECTION 31, TOWNSHIP 141 NORTH,
RANGE 31 WEST OF THE 5th PRINCIPAL MERIDIAN.

1871 - The original Public Land Survey was run by G.R. Stuntz. A wood post was set for a Witness Corner 2.50 chains (165') North. and two bearing trees were recorded as accessories to the Witness corner.

7" Aspen N 66°W 69 links (45.54')
7" Pine N 82°E 88 links (58.08')

1915 - Harry S. Todd deputy Hubbard County Surveyor subdivided Section 36, T 141 N, R 32 W. Found a wood stake for W.C. and had testimony of Jess McMurtrie stating stake is same set by U.S. Surveyor. Also found burned stump of -NE bearing tree. Set a 2" x 48" capped iron for corner and recorded two new bearing trees as accessories:

6" Poplar N 14°23' W 23.75 ft.
4" W. Oak N 21°E 50.35 ft.

1921 - Elmer B. Horst Deputy Cass County Surveyor found the 2" monument set by Todd in 1915. Accepted this monument in his subdivision of Section 31. Record Book C, page 445.

1959 - Harold Curo Cass County Surveyor found the capped iron monument set by Todd in 1915. found no accessories to the corner. Replaced monument with a 2½ inch by 60 inch stamped 3 inch brass capped monument and recorded new corner accessories:

Certificate filed 3/22/60 Document # 20,
in book of Corner Certificates 5" R. Oak N 48°44' E 53.80 ft.
in Cass County Recorder's 4" x 4" Cedar post N 21°41' E 24.40 ft.
office. 4" x 4" Cedar post N 58°22' W 23.85 ft.

1984 - Kerick Surveying, Inc., Bemidji, MN. found the 3 inch brass capped monument set by Curo in 1959 and his corner accessories o.k. Found his monument to be stamped wrong, stamped 250 ft North, restamped 165 ft. North with arrow. Set new accessories that appear on this certificate.