

CERTIFICATE OF LOCATION OF GOVERNMENT CORNER

NORTHEAST Corner of Section 30, Township 141 N, Range 31 W, 5th P.M.

STATE OF MINNESOTA, County of CASS

At the corner location shown on the sketch:

On 10/4/84 found a 2½ in. by 5 ft. galvanized pipe with a 3 in. brass cap,
DATE stamped as shown, up 18 inches.

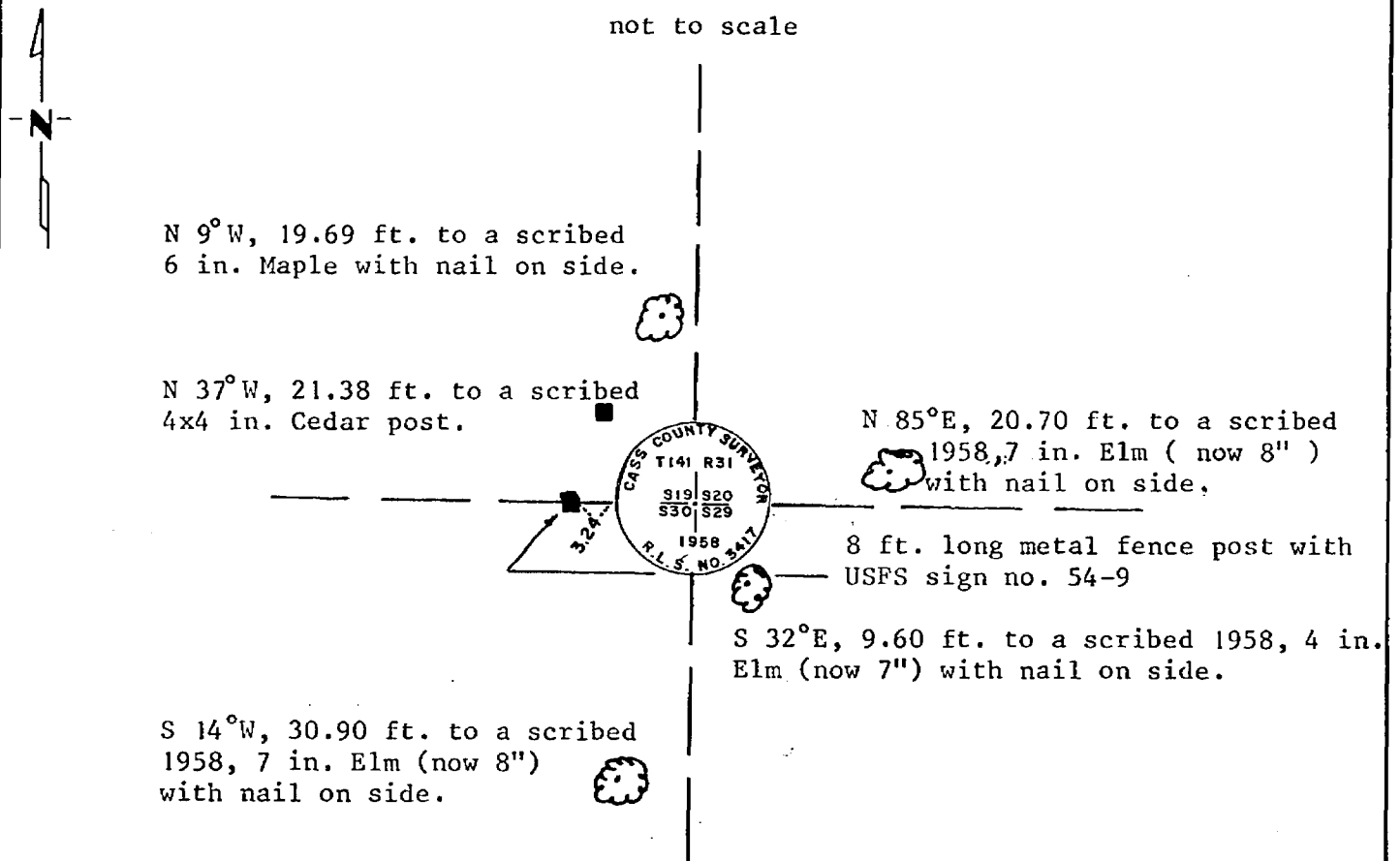
left monument as found, lowered monument, removed monument (explain)

On _____ placed a _____
DATE

5¼° East declination

SKETCH OF REFERENCE TIES

not to scale



Statement of evidence relative to this corner location is on back of page.

I hereby certify that this document and the data contained herein was prepared by me or under my direct supervision.

Anthony E. Leitch 12/10/84
SIGNATURE DATE

Registration No. 12266

Land Surveyor, Professional Engineer

County Surveyor, County Engineer

280485
 OFFICE OF THE REGISTER OF DEEDS

County of Cass

I hereby certify that this document was filed in the Reg. of Deeds office at 9:10 A .M. on the 25 day of February A.D., 1985

Register of Deeds Claudine Kaylor

By MS, Deputy

DOCUMENT NO. 280485

Statement of Evidence:

NORTHEAST CORNER OF SECTION 30, TOWNSHIP 141 NORTH, RANGE
31 West OF THE 5th PRINCIPAL MERIDIAN.

1873 - The original Public Land Survey was run by P. H. Conger. A wood post was set to mark the corner and four bearing trees were recorded as accessories:

6" J. Pine N 80°E 10 links (6.60')
5" J. Pine N 14°E 16 links (10.56')
5" J. Pine S 47°W 18 links (11.88')
7" Poplar S 37°W 19 links (12.54')

1921 - Elmer B. Horst Deputy Cass County Surveyor did a County resurvey of Section 30 he could not find any original evidence, set corner lost double proportion method. He set a 2" x 48 " iron pipe, County Record Book C, page 452 and 456.

1958 - Harold Curo Cass County Surveyor found the 2" x 48" iron pipe set by Horst. replaced iron with a 3 inch by 60 inch brass capped monument(stamped)

Set three bearing trees as accessories:

Certificate filed 3/22/60 Document # 5, in book of Corner certificates in Cass County Recorder's office.

4" Elm N 84°44' E 20.65 ft.
4" Elm S 32°04' E 9.45 ft.
7" Elm S 13°43' W 30.70 ft.

1984 - Kerick Surveying, Inc., Bemidji, Mn. found 1958 stamped 3 inch brass cap monument. Subdivided Section 30 for the U.S. Forest Service and accepted this monument as found, also recovered the three bearing trees set by Curo. Remarkd his bearing trees and set new accessories that appear on this certificate.