

CERTIFICATE OF LOCATION OF GOVERNMENT CORNER

EAST QUARTER Corner of Section 18, Township 141, Range 27, 5th P.M.

STATE OF MINNESOTA, County of CASS

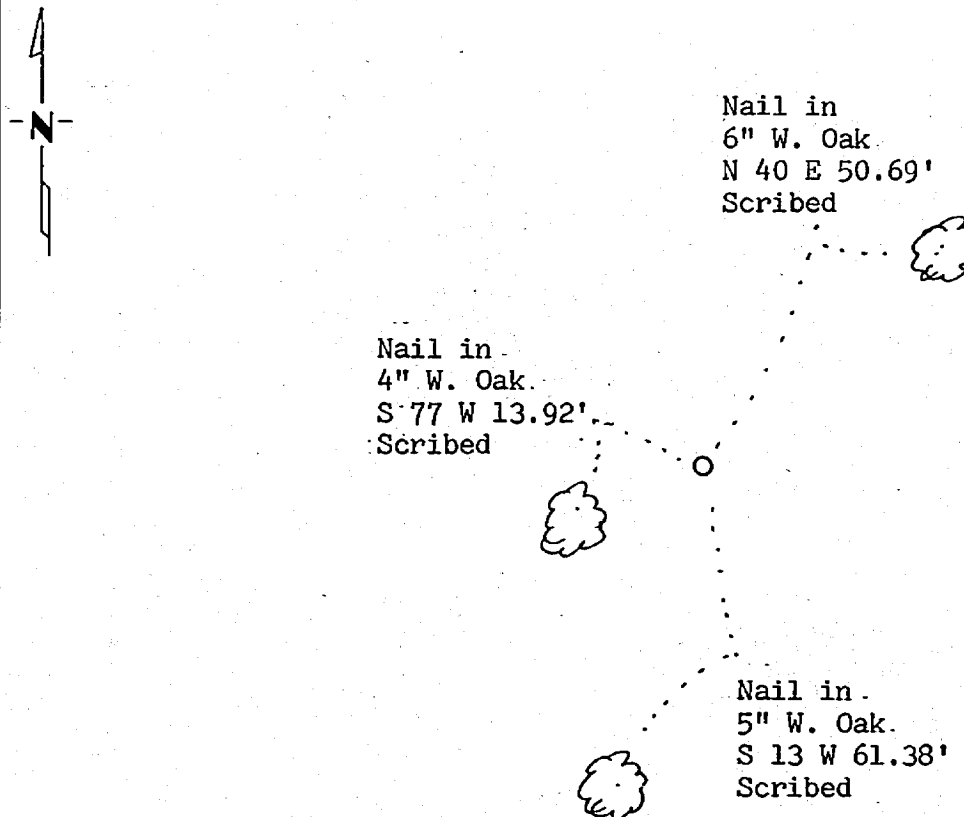
At the corner location shown on the sketch:

On 10/15/80 found a GLO brass cap monument as set in 1919.
DATE

left monument as found, lowered monument, removed monument (explain)

On _____ placed a _____
DATE

SKETCH OF REFERENCE TIES



BEARINGS ARE APPROXIMATE

Statement of evidence relative to this corner location is on back of page:

I hereby certify that this document and the data contained herein was prepared by me or under my direct supervision.

Sam H. Stevenson 9-14-82
SIGNATURE DATE

Registration No. 12684

Land Surveyor, Professional Engineer

County Surveyor, County Engineer

²⁷⁹²³³
OFFICE OF THE COUNTY RECORDER
County of Cass

I hereby certify that this document was filed in the Co. Recorders office at 9:40 A.M. on the 5 day of Dec. A.D., 1984

County Recorder Claudia Kaylor
By MS, Deputy

DOCUMENT NO. 272233

Statement of Evidence:

- 1874 U.S. General Land Office survey set wood post for this corner and marked the following bearing trees: 14" W. Pine N 78 W 94 links.
- 1919 U.S. General Land Office dependent resurvey found the corner marked by an old Government wood stake. Also found the original bearing tree N 68-45 W 94 links. An iron pipe with a marked brass cap was set to mark the corner. The following bearing trees were marked: 13" N. Pine S 86-30 E 158 links and 20" W. Oak N 85 W 216 links.
- 1980 U.S. Forest Service technician G. Brama found the corner monumented with a GLO brass cap monument in good condition up 6". The following bearing trees were found: Original W. Pine stump N 69 W 62.0', N. Pine stump N 89 E 104.3', and W. Oak stump N 85 W 142.6'. Three new bearing trees were marked and are shown on this certificate.
- 1982 County Surveyor's Records in the Recorder's Office were checked and no resurvey information was found on this corner.
- 1982 Analysis of the above data indicates that the location of this Government corner has been perpetuated. I accepted the monument as marking the corner location as when set in 1919 by the GLO resurvey based on bearing tree evidence.