

# CERTIFICATE OF LOCATION OF GOVERNMENT CORNER

Southeast Corner of Section 4, Township 139, Range 29, 5th P.M.  
STATE OF MINNESOTA, County of Cass

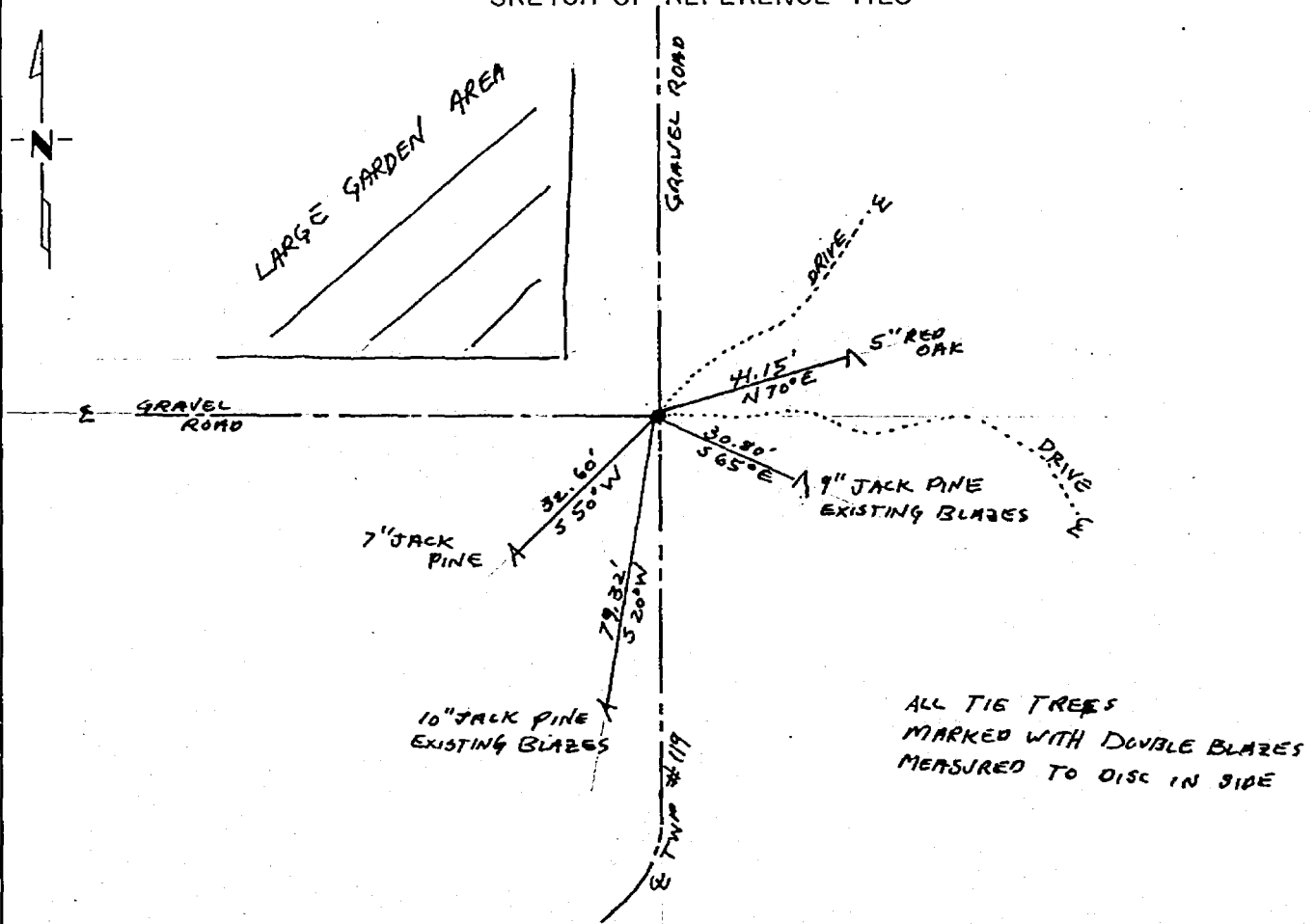
At the corner location shown on the sketch:

On 7/14/81 found a Large spike 2" below centerline gravel road  
in an iron pipe

left monument as found,  lowered monument,  removed monument (explain)

On 7/26/84 placed a 4" cast iron monument 0.40 feet below road surface.

SKETCH OF REFERENCE TIES



Statement of evidence relative to this corner location is on back of page. 276695

I hereby certify that this document and the data contained herein was prepared by me or under my direct supervision.

Wayne S. Sundecker 7/30/84  
SIGNATURE DATE

Registration No. 7452

Land Surveyor,  Professional Engineer

County Surveyor,  County Engineer

OFFICE OF THE COUNTY RECORDER

County of Cass

I hereby certify that this document was filed in the Co. Recorders office at 11:45 A.M. on the 31 day of July A.D., 1984

County Recorder Clairline Kayser

By MS, Deputy

DOCUMENT NO. 276695

Statement of Evidence:

Original Government Survey

Corner set in 1865 by Wright & Walker

in 1911 John Curo set 2" X 48" I.P.

In 1912 John Curo found same corner

in 1920 E.B. Horst found I.P.

In 1942 John Curo used corner

In 1964 R.F. Schneider, Registered Land Surveyor #5740, used corner and tied out

In 1970 R.F. Schneider used same corner

In 1973 Myron Landecker, Registered Surveyor #7452, used same corner in subdivision in Section 3, Township 139, Range 29.

In 1976 and 1977 Myron Landecker used same corner in survey in Section 4.

On 7/14/81 Myron Landecker used same corner in section subdivision in Section 4, Township 139, Range 29.

In 1924 John Greene found this corner, Book 189, page 4.

In 1916 J.A. Johnson found corner, Book 61, page 128.

Myron Landecker believes this to be a perpetuation of the original Government corner as established from previous surveys.