

CERTIFICATE OF LOCATION OF GOVERNMENT CORNER

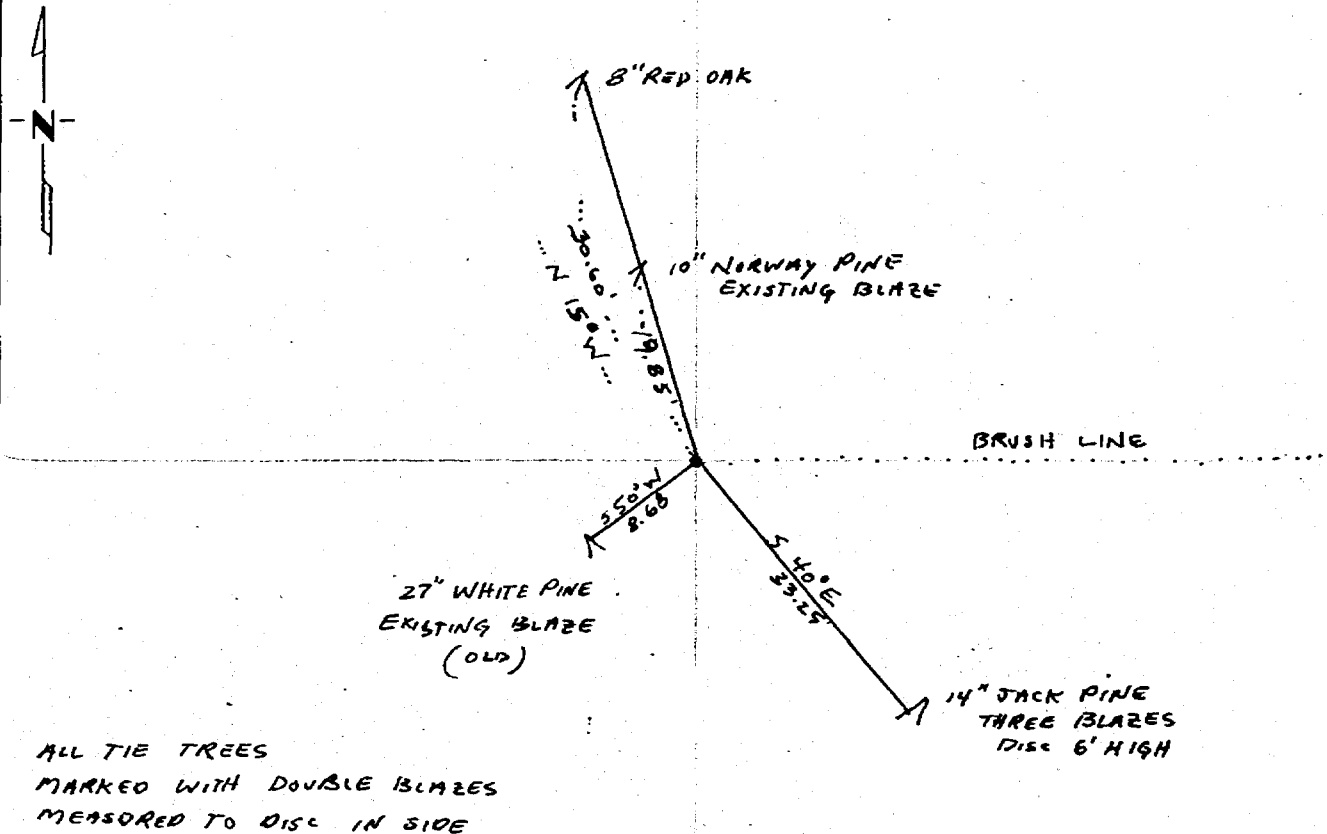
North Quarter _____ Corner of Section 4, Township 139, Range 29, 5th P.M.

STATE OF MINNESOTA, County of Cass

At the corner location shown on the sketch:

- On 7/14/81 found a New 2" galvanized pipe 2' above ground
DATE
painted blue
 - left monument as found, lowered monument, removed monument (explain)
- On 7/27/84 placed a 4" cast iron monument 0.2 feet below ground
DATE

SKETCH OF REFERENCE TIES



Statement of evidence relative to this corner location is on back of page.

I hereby certify that this document and the data contained herein was prepared by me or under my direct supervision.

Morgan S. Lundberg 7/30/84
SIGNATURE DATE

Registration No. 7452
 Land Surveyor, Professional Engineer
 County Surveyor, County Engineer

276689
 OFFICE OF THE COUNTY RECORDER
 County of Cass

I hereby certify that this document was filed in the Co. Recorders office at 10:50 A.M. on the 31 day of July A.D., 1984
 County Recorder Clondine Koyler
 By MS, Deputy
 DOCUMENT NO. 276689

Statement of Evidence:

Original Government Survey

Corner was set in 1865 by Wright & Walker

In 1973 Myron Landecker, Registered Land Survey #7452, doing research found 2" X 2" wood stake, replace it with a 2" iron.

On 6/20/76 and 9/6/77 Myron Landecker used same corner in surveys in Section 4, Township 139, Range 29.

On 7/14/81 Myron Landecker found a new 2" galvanized pipe at same corner location and used it in the section subdivision of Section 4, Township 139, Range 29.

Myron Landecker believes said corner to be a perpetuation of the original Government corner.