

CERTIFICATE OF LOCATION OF GOVERNMENT CORNER

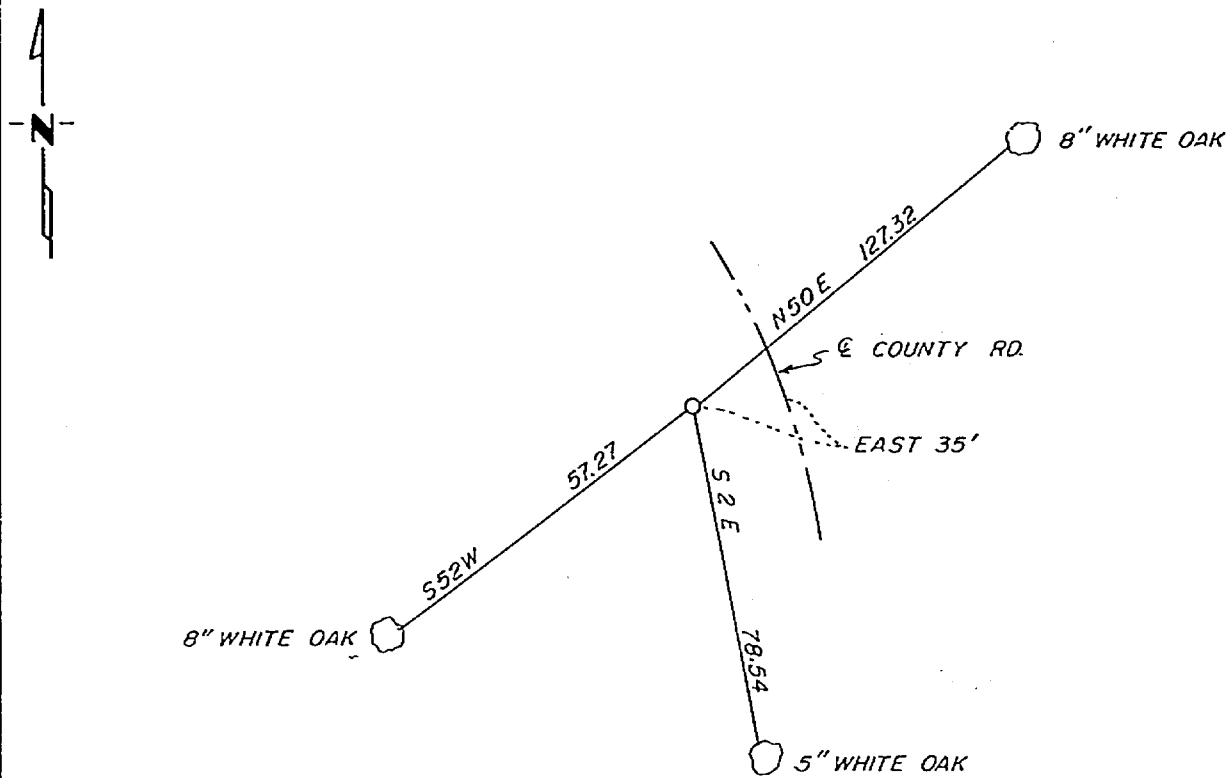
E 1/4 Corner of Section 12, Township 143, Range 31, 5th P.M.

STATE OF MINNESOTA, County of Cass

At the corner location shown on the sketch:

- On _____ found a _____
DATE
- left monument as found, lowered monument, removed monument (explain)
- On 3-4-1983 placed a 2"x36" iron pipe with brass cap on east line
DATE of section from the SE corner, sec. and S 1/16 corner.

SKETCH OF REFERENCE TIES



Statement of evidence relative to this corner location is on back of page. 268850

I hereby certify that this document and the data contained herein was prepared by me or under my direct supervision.

Walter E. Cass 3-18-83
SIGNATURE DATE

Registration No. 11395

- Land Surveyor, Professional Engineer
- County Surveyor, County Engineer

OFFICE OF THE REGISTER OF DEEDS

County of Cass

I hereby certify that this document was filed in the Reg. of Deeds office at 3:35 P .M. on the 18 day of May A.D., 19 83

Register of Deeds Claudia Kayler

By MS, Deputy

DOCUMENT NO. 268850

Statement of Evidence:

In 1919, Albinus N. Kimmel, a US cadastral engineer set a 1"x36" iron pipe with brass cap for the E 1/4 corner from which he marked the following bt's, a 7" aspen S 83 E 37 links and a 9" aspen S 37 W 80 lks.

On 3-4-1983, Walter E. Curo, a registered land surveyor and Ken Metcalf searched for this corner. As it falls in the ditch of the new road, it has been destroyed along with the SE bt. We find no evidence of the 9" aspen S 37 W, so we set a 2"x36" iron pipe with brass cap flush with ground in the bottom of the ditch. This corner is set on line with the SE corner of the section and the S.1/16 corner at a proportional distance. The bearing and distance west to the CE 1/16 corner checks with Govt. bearing and distance.