

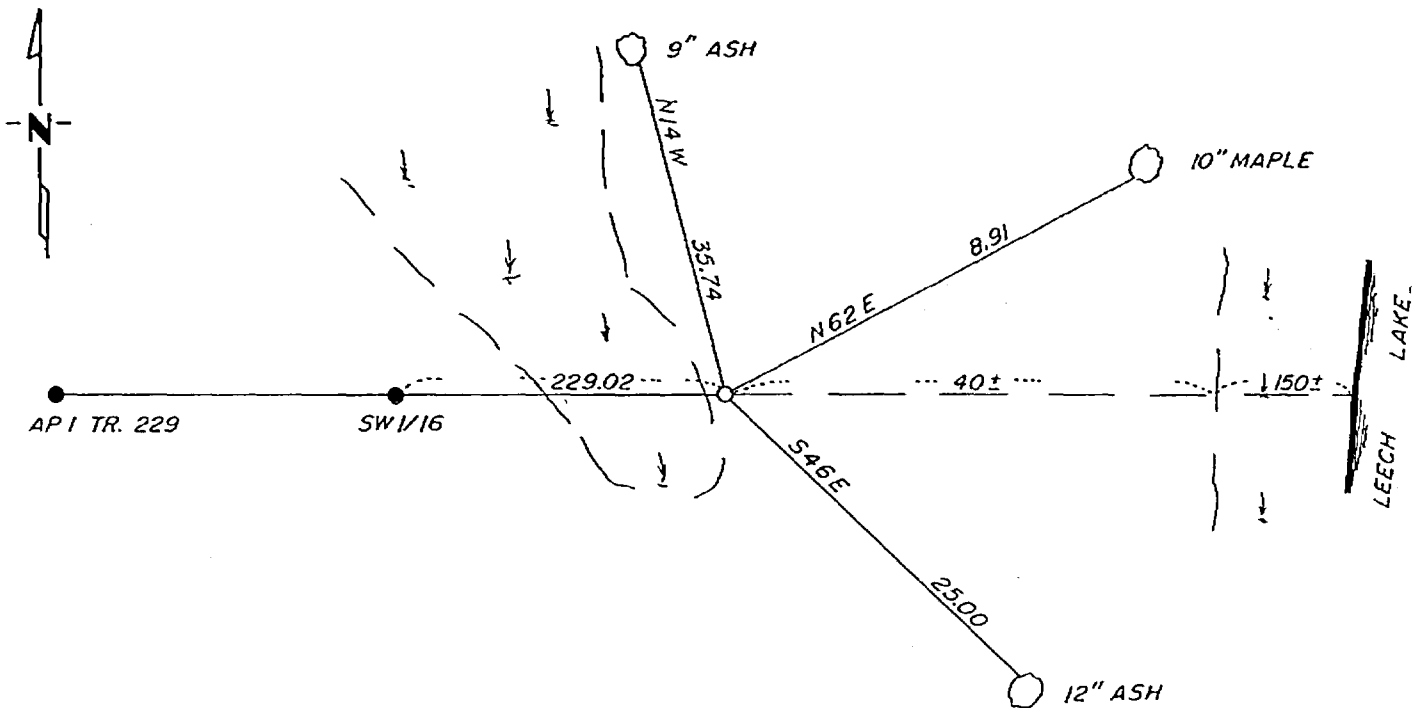
CERTIFICATE OF LOCATION OF GOVERNMENT CORNER

SMC Corner of Section 18, Township 143, Range 30, 5th P.M.
STATE OF MINNESOTA, County of Cass

At the corner location shown on the sketch:

- On _____ found a _____
DATE
- left monument as found, lowered monument, removed monument (explain)
- On 3-7-1983 placed a 2"x5' iron pipe with brass cap on line and
DATE at Govt. distance

SKETCH OF REFERENCE TIES



Statement of evidence relative to this corner location is on back of page.

I hereby certify that this document and the data contained herein was prepared by me or under my direct supervision.

Walter E. Cook 3-18-83
SIGNATURE DATE

Registration No. 11395

- Land Surveyor, Professional Engineer
- County Surveyor, County Engineer

268849
OFFICE OF THE REGISTER OF DEEDS
County of Cass

I hereby certify that this document was filed in the Reg. of Deeds office at 3:30 P.M. on the 18 day of May A.D., 1983

Register of Deeds Claudine Koylow
By MS, Deputy

DOCUMENT NO. 268849

Statement of Evidence:

In 1919, Earl Harrington, a US surveyor set a 1"x36" iron pipe with brass cap for the SMC from which he marked the following bt's, a 7" black ash N 67-45 E 10 links and a 8" black ash S 55-15 W 10 links.

On 3-7-1983, Walter E. Curo, a registered land surveyor and Ken Metcalf searched for this corner and bt's but find no trace of either bt's or corner, so we set a 2"x5' iron pipe with brass cap at Govt. distance from the SW 1/16 and on line. We mark new bt's as shown on the front.