

# CERTIFICATE OF LOCATION OF GOVERNMENT CORNER

Northeast Corner of Section 30, Township 139N, Range 30W, 5th P.M.

STATE OF MINNESOTA, County of Cass

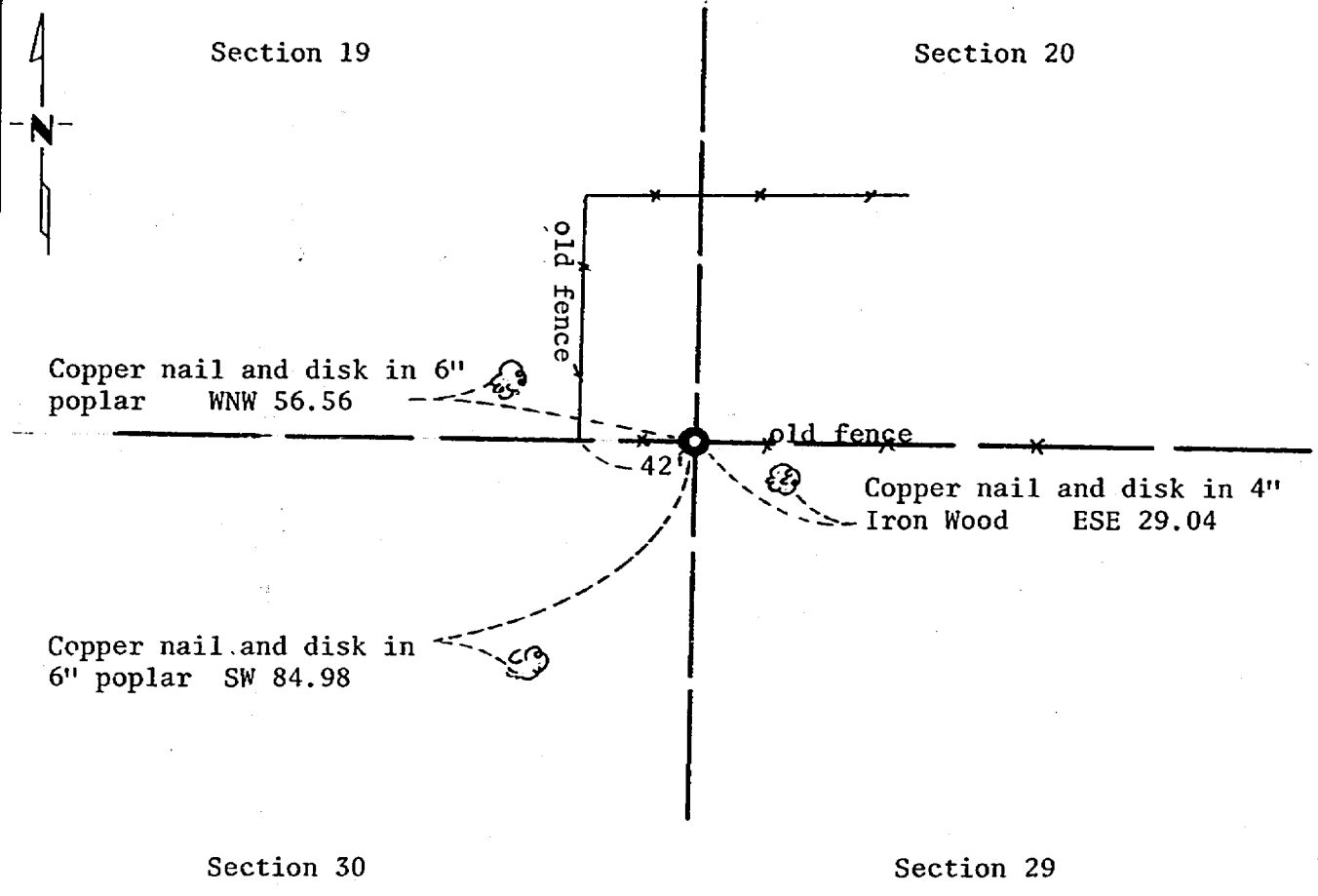
At the corner location shown on the sketch:

On 2/10/81 found a capped 2" pipe up 3"  
DATE

left monument as found,  lowered monument,  removed monument (explain)

On \_\_\_\_\_ placed a \_\_\_\_\_  
DATE

### SKETCH OF REFERENCE TIES



Statement of evidence relative to this corner location is on back of page 267955

I hereby certify that this document and the data contained herein was prepared by me or under my direct supervision.

James W. Nelson 3/4/83  
SIGNATURE DATE

Registration No. 11865

- Land Surveyor,  Professional Engineer
- County Surveyor,  County Engineer

OFFICE OF THE COUNTY RECORDER  
County of Cass

I hereby certify that this document was filed in the Co. Recorders office at 12:25 P .M. on the 4 day of April A.D., 1983

County Recorder Claudine Kayler  
By MS, Deputy

DOCUMENT NO. 267955

Statement of Evidence:

Northeast Corner, Section 30, Township 139 North, Range 30 West, 5th Principal Meridian.

The original public land survey was run in 1865 and a wood post was set to mark the corner.

In 1911, Mr. John Curo, Cass County Surveyor, set a 2" x 48" capped iron pipe at the location of a hub and tack which had been set from original bearing trees.

In 1928, the Minnesota State Highway Department found the iron pipe.

In 1981, the Minnesota Department of Transportation recovered the 2" capped pipe and accepts this monument as a perpetuation of the original Government Corner.

For details and survey analysis, contact the Department of Transportation District Surveys Office in Brainerd, Minnesota.