

CERTIFICATE OF LOCATION OF GOVERNMENT CORNER

North Quarter Corner of Section 5, Township 139N, Range 30W, 5th P.M.

STATE OF MINNESOTA, County of Cass

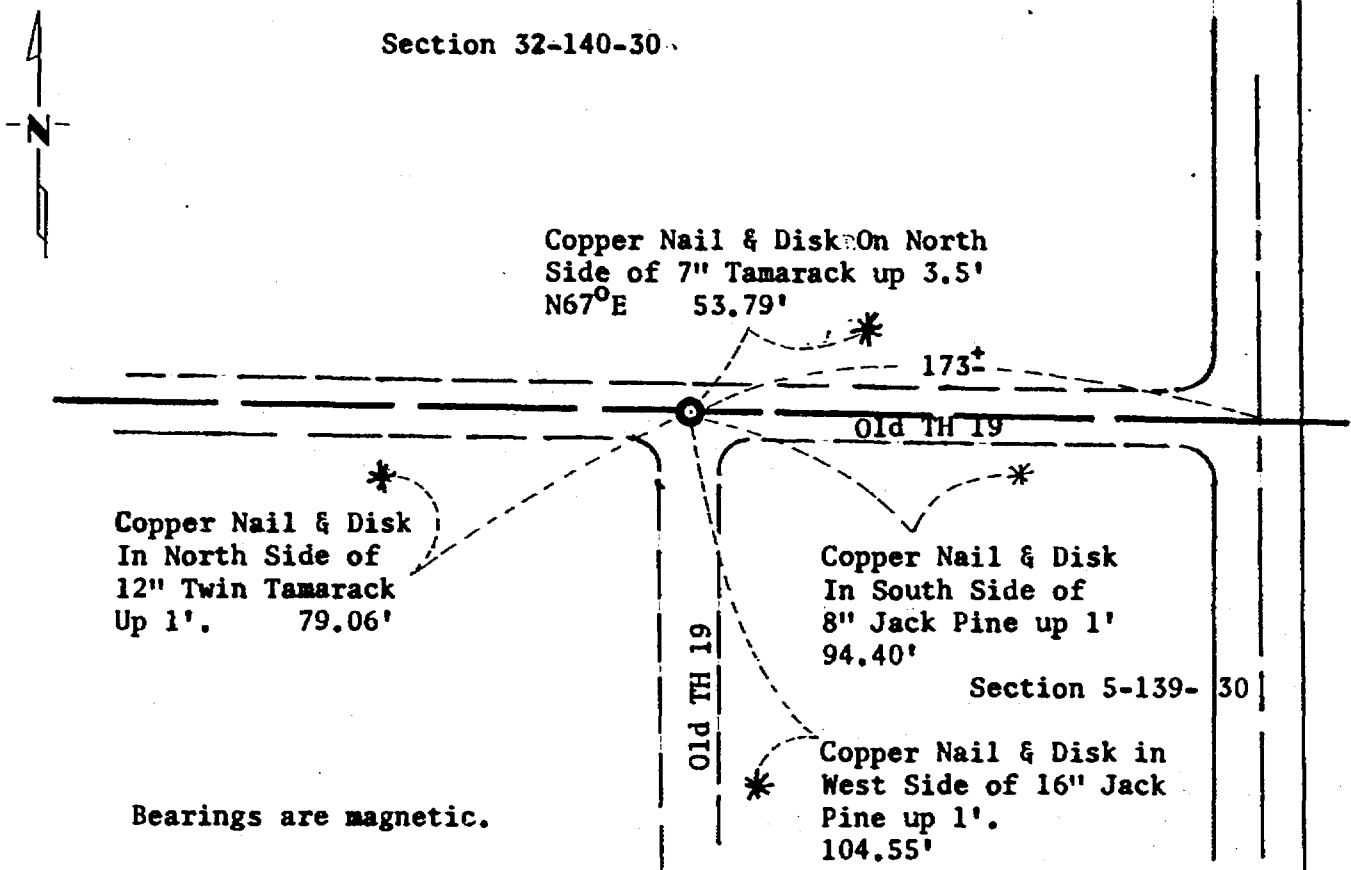
At the corner location shown on the sketch:

On 04/27/81 found a 3/4" x 24" iron pipe over 2-1/2" capped pipe (down 2.5'
(down 0.2')

(pipe) left monument as found, lowered monument, removed monument (explain) (pin)

On 09/01/82 placed a Minnesota Department of Transportation cast iron
monument (down 0.3').

SKETCH OF REFERENCE TIES



Statement of evidence relative to this corner location is on back of page.

267939

I hereby certify that this document and the data contained herein was prepared by me or under my direct supervision.

James W. Nielsen 3/4/83
SIGNATURE DATE

Registration No. 11865

Land Surveyor, Professional Engineer

County Surveyor, County Engineer

OFFICE OF THE COUNTY RECORDER

County of Cass

I hereby certify that this document was filed in the Co. Recorders office at 11:05 A.M. on the 4 day of April A.D., 1983

County Recorder Cherline Kayler

By MS, Deputy

DOCUMENT NO. 267939

Statement of Evidence: North Quarter Corner Section 5, Township 139 North,
Range 30 West, 5th Principal Meridian.

The original Public Land Survey was run in 1860 and a wood post was set to mark the corner.

In 1907, Mr. John Curo, Cass County Surveyor, called for a quarter post at the corner.

In 1928, the Minnesota State Highway Department found a 2" capped pipe at the road intersection. This is the type of monument Mr. Curo historically set when he replaced a wood post.

In 1967, the Minnesota State Highway Department found the 2" capped pipe at the road intersection.

In 1981, the Minnesota Department of Transportation recovered the 2" capped pipe. This pipe checks the 1928 alignment calls. The Minnesota Department of Transportation accepts this pipe as a perpetuation of the original Government Corner.

For details and survey analysis, contact the Minnesota Department of Transportation District Surveys Office in Brainerd, Minnesota.

* County Surveyor's Records: In 1913, Mr. John Curo, Cass County Surveyor, found a stake at the corner and set a 2x28" capped iron monument.