

CERTIFICATE OF LOCATION OF GOVERNMENT CORNER

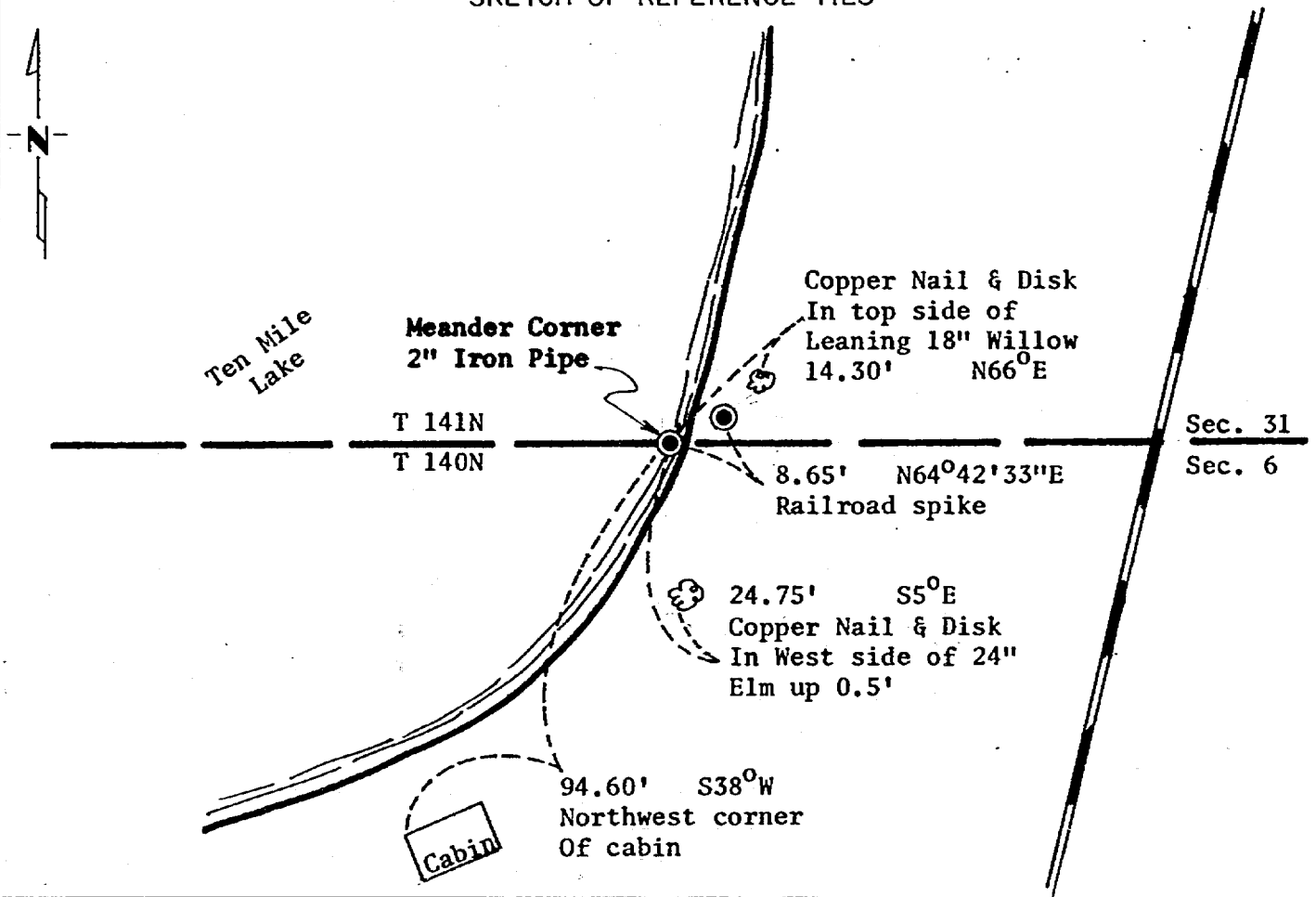
Meander _____ Corner of Section 31⁶, Township 141N^{140N}, Range 30W, 5th P.M.

STATE OF MINNESOTA, County of Cass

At the corner location shown on the sketch:

- On 08/13/81_{DATE} found a 2" iron pipe in edge of lake.
- left monument as found, lowered monument, removed monument (explain)
- On ______{DATE} placed a _____

SKETCH OF REFERENCE TIES



Statement of evidence relative to this corner location is on back of page.

26 7926

I hereby certify that this document and the data contained herein was prepared by me or under my direct supervision.

James W. Nielsen 3/4/83
SIGNATURE DATE

Registration No. 11865

- Land Surveyor, Professional Engineer
- County Surveyor, County Engineer

OFFICE OF THE COUNTY RECORDER

County of Cass

I hereby certify that this document was filed in the Co. Recorders office at 10:00 A.M. on the 4 day of April A.D., 1983

County Recorder Claudine Krayer

By MS, Deputy

DOCUMENT NO. 26 7926

Statement of Evidence: Meander Corner for Section 31/6, Township 140 North,
Range 30 West, 5th Principal Meridian.

The original Public Land Survey was run in 1865 and a wood post was set to mark the corner.

In 1911 Mr. J. Curo (County Surveyor) set a 2" capped pipe in cement from the original bearing trees.

In 1947 Mr. H. Curo found the 2" pipe.

In 1981 the Minnesota Department of Transportation recovered a 2" pipe in the edge of the lake. This pipe checks Mr. Curo's 1947 distance to the Northeast Corner of Sec. 6 within 0.1 foot.

We also found a R.R. spike 8.65 feet northeast of the 2" pipe, origin unknown.

The Minnesota Department of Transportation accepts this pipe as a perpetuation of the original Government Corner.

For details and survey analysis contact the Minnesota Department of Transportation Surveys Office in Brainerd, Minnesota.