

CERTIFICATE OF LOCATION OF GOVERNMENT CORNER

North Quarter Corner of Section 18, Township 140N, Range 30W, 5th P.M.

STATE OF MINNESOTA, County of Cass

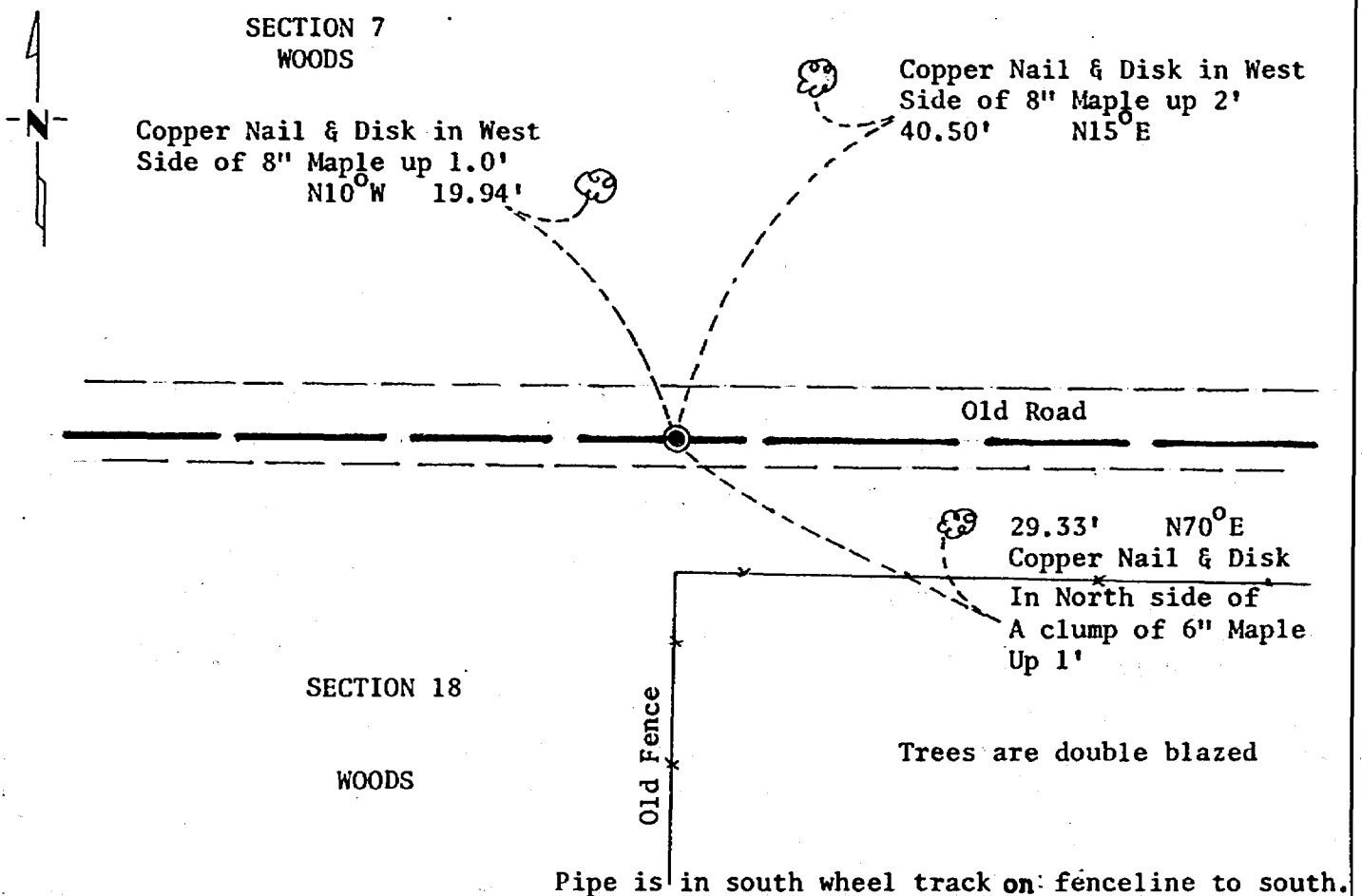
At the corner location shown on the sketch:

On 05/18/81 found a 2" pipe flush (cap knocked off)

left monument as found, lowered monument, removed monument (explain)

On _____ placed a _____

SKETCH OF REFERENCE TIES



Statement of evidence relative to this corner location is on back of page. 267723

I hereby certify that this document and the data contained herein was prepared by me or under my direct supervision.

James W. Nielsen 3/4/83
SIGNATURE DATE

Registration No. 11865

Land Surveyor, Professional Engineer
 County Surveyor, County Engineer

OFFICE OF THE COUNTY RECORDER
 County of Cass

I hereby certify that this document was filed in the Co. Recorders office at 9:45 A .M. on the 4 day of April A.D., 19 83

County Recorder _____
 By Claudine Kayler, Deputy
MS
 DOCUMENT NO. 267723

Statement of Evidence: North Quarter Corner Section 18, Township 140 North,
Range 30 West, 5th Principal Meridian.

The original Public Land Survey was run in 1865 and a wood post was set to mark the corner.

In 1915 Mr. John Curo resurveyed Section 18 and set a 2-1/2" capped pipe for the corner at a lost position.

In 1928 and 1967 the Minnesota Highway Department found the 2-1/2" pipe and tied it to the highway alignment.

In 1981 the Minnesota Department of Transportation recovered the 2-1/2" pipe and accepts this as the correct location for the corner.

For details and survey analysis contact the Minnesota Department of Transportation Surveys Office in Brainerd, Minnesota.