

CERTIFICATE OF LOCATION OF GOVERNMENT CORNER

NORTH SIXTEENTH Corner of Sections 14&15, Township 144, Range 29, 5th P.M.

STATE OF MINNESOTA, County of CASS

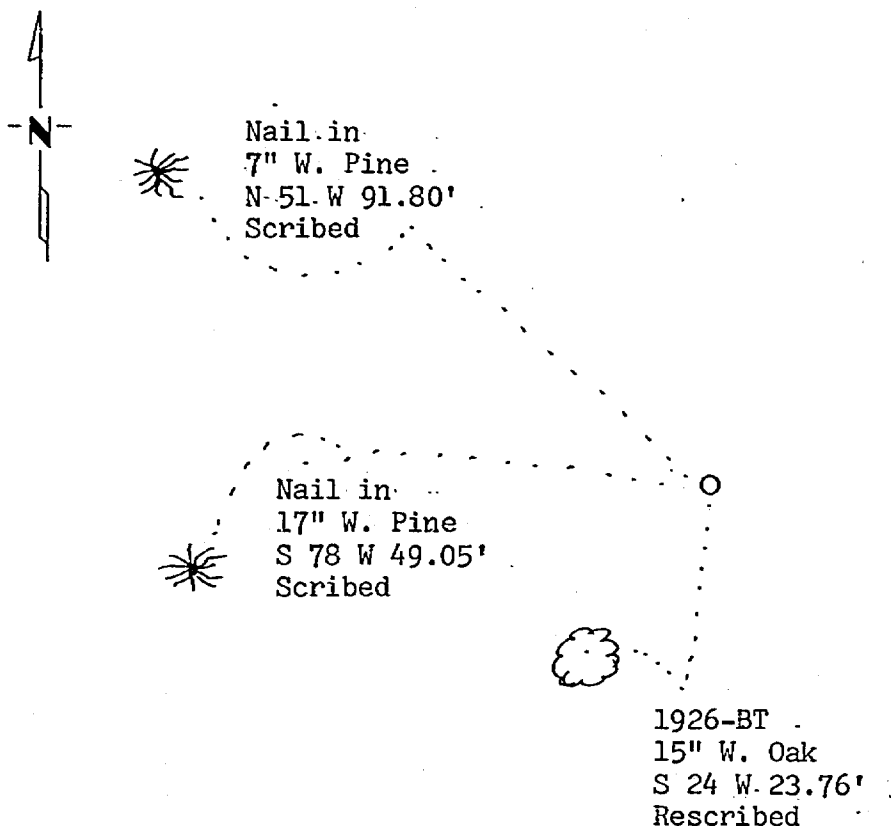
At the corner location shown on the sketch:

On 1/12/80 found a GLO brass cap monument as set in 1926.
DATE

left monument as found, lowered monument, removed monument (explain)

On _____ placed a _____
DATE

SKETCH OF REFERENCE TIES



BEARINGS ARE APPROXIMATE

Statement of evidence relative to this corner location is on back of page.

I hereby certify that this document and the data contained herein was prepared by me or under my direct supervision.

Nancy H. Stevenson 9-13-82
SIGNATURE DATE

Registration No. 12604

Land Surveyor, Professional Engineer

County Surveyor, County Engineer

264943
 OFFICE OF THE COUNTY RECORDER
 County of Cass

I hereby certify that this document was filed in the Co. Recorders office at 9:56 A. .M. on the 14 day of Sept. A.D., 1982

County Recorder Beulah Hendricks

By MS, Deputy

DOCUMENT NO. 264943

Statement of Evidence:

- 1926 U.S. General Land Office dependent resurvey established this corner and an iron pipe with a marked brass cap was set to mark the corner. The following bearing trees were marked: 8" R. Oak S. 61 E 50 links and 10" W. Oak S 23-30 W 36 links.
- 1961 U.S. Forest Service records show the following: S. Morrison found the brass cap monument and the W. Oak bearing tree alive. The R. Oak stump was found nearly rotted away.
- 1980 U.S. Forest Service technician G. Brama found the corner monumented with a GLO brass cap monument in good condition up 6". The following bearing trees were found: 15" W. Oak S 24 W 23.76'. No remains found of the R. Oak. Two new bearing trees were marked and are shown on this certificate.
- 1982 County Surveyor's Records in the Recorder's Office were checked and no resurvey information was found on this corner.
- 1982 Analysis of the above data indicates that the location of this Government corner has been perpetuated. I accepted the monument as marking the corner location as when set in 1926 by the GLO resurvey based on bearing tree evidence.