

CERTIFICATE OF LOCATION OF GOVERNMENT CORNER

CENTER EAST SIXTEENTH Corner of Section 17, Township 142, Range 27, 5th P.M.

STATE OF MINNESOTA, County of CASS

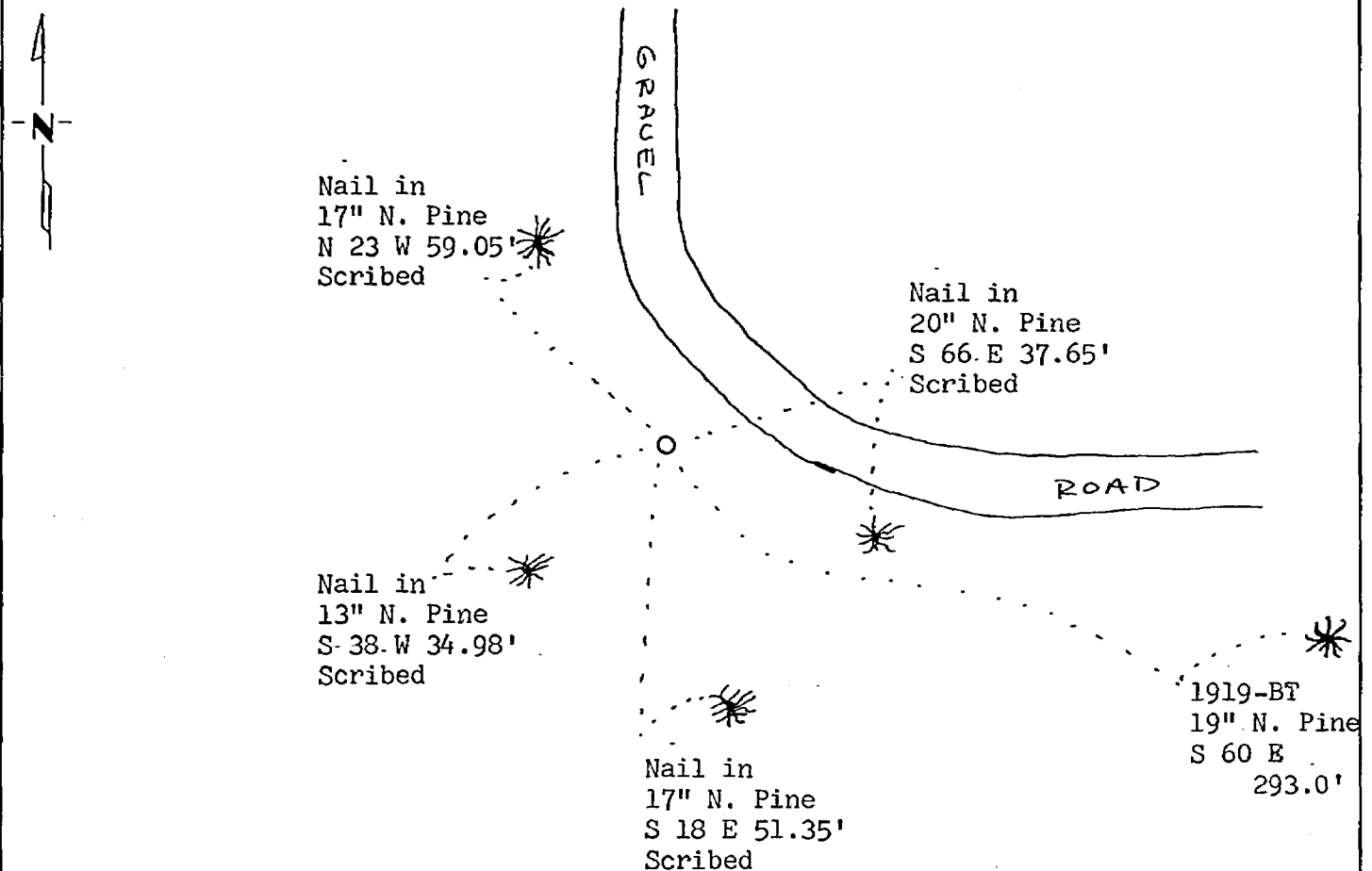
At the corner location shown on the sketch:

On 8/23/79 found a GLO brass cap monument as set in 1919.
DATE

left monument as found, lowered monument, removed monument (explain)

On _____ placed a _____
DATE

SKETCH OF REFERENCE TIES



Statement of evidence relative to this corner location is on back of page.

I hereby certify that this document and the data contained herein was prepared by me or under my direct supervision.

Ray H. Stevenson 9-13-82
SIGNATURE DATE

Registration No. 12684

Land Surveyor, Professional Engineer

County Surveyor, County Engineer

264923
 OFFICE OF THE COUNTY RECORDER

County of Cass

I hereby certify that this document was filed in the Co. Recorders office at 9:12 A. M. on the 14 day of Sept. A.D., 1982

County Recorder Dorothy Herlihy

By MS, Deputy

DOCUMENT NO. 264923

Statement of Evidence:

- 1919 U.S. General Land Office dependent resurvey established this corner and an iron pipe with a marked brass cap was set to mark the corner. The following bearing trees were marked: 6" Spruce N $68\frac{1}{2}$ W 320 links and 6" N. Pine S $60\frac{1}{2}$ E 444 links.
- 1979 U.S. Forest Service technician C. Krause found the corner monumented with a GLO brass cap monument in good condition up 6". The following bearing trees were found: 19" N. Pine S 60 E 293.0' with overgrown scar. No evidence found of the Spruce. Four new bearing trees were marked and are shown on this certificate. A steel sign post was set 4.2' east of the corner.
- 1982 County Surveyor's Records in the Recorder's Office were checked and no resurvey information was found on this corner.
- 1982 On Sept. 10 I visited the corner and found items as per the 1979 USFS reports. I accepted the monument as marking the same position as when set in 1919 based on the one remaining bearing tree. Corner is at approximate P.I. of road running north and east.