

CERTIFICATE OF LOCATION OF GOVERNMENT CORNER

Meander Corner on North Line Corner of Section 3, Township 138N, Range 31W, 5th P.M.

STATE OF MINNESOTA, County of Cass

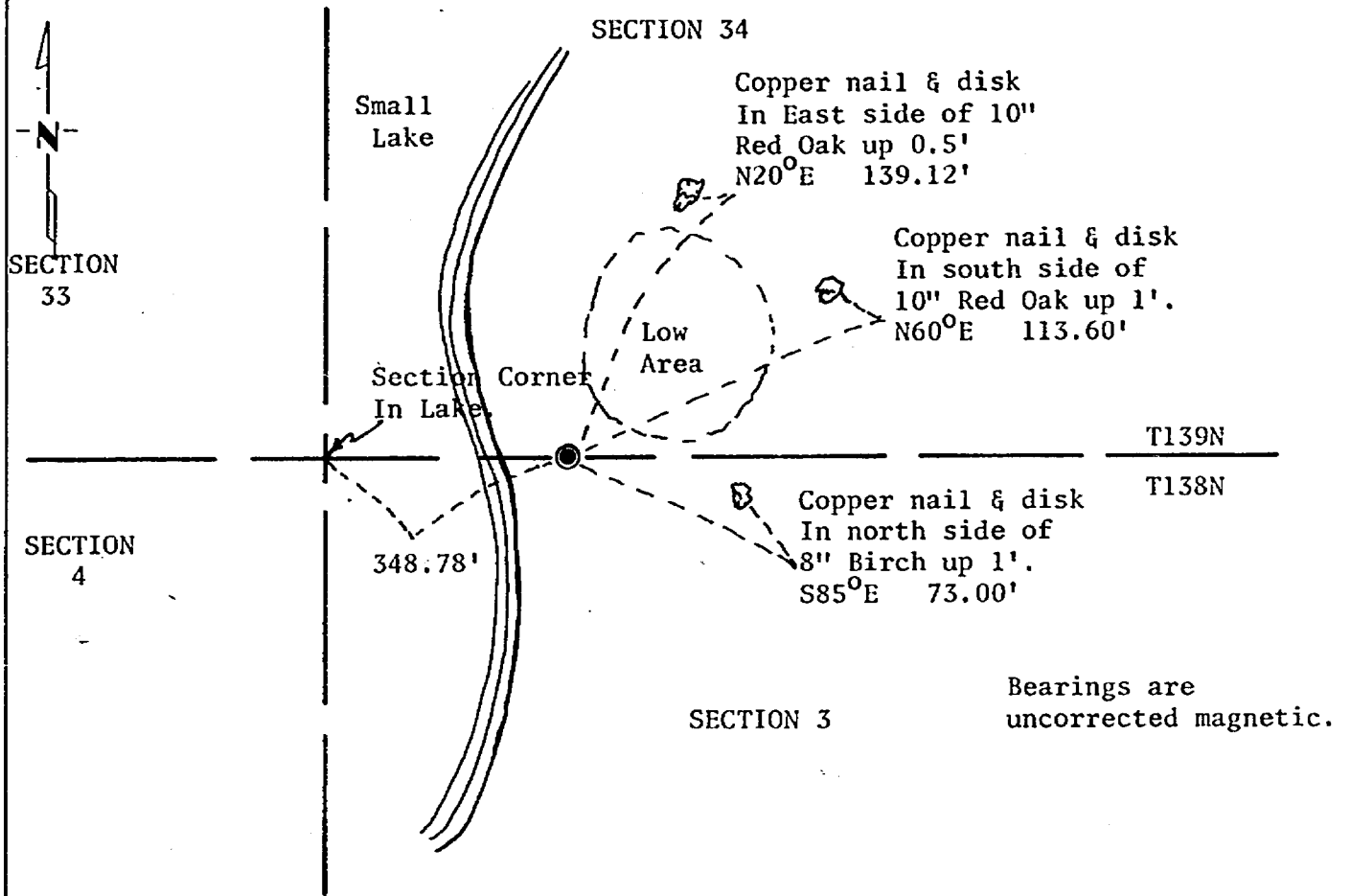
At the corner location shown on the sketch:

On 02/25/81 found a 2-1/2" capped pipe.
DATE

left monument as found, lowered monument, removed monument (explain)

On _____ placed a _____
DATE

SKETCH OF REFERENCE TIES



Statement of evidence relative to this corner location is on back of page.

I hereby certify that this document and the data contained herein was prepared by me or under my direct supervision.

Alphonse P. Welle 9/28/81
SIGNATURE DATE

Registration No. 11873

- Land Surveyor, Professional Engineer
 County Surveyor, County Engineer

262936

OFFICE OF THE COUNTY RECORDER
 County of Cass

I hereby certify that this document was filed in the Co. Recorders office at 11:20 A. .M. on the 25 day of May A.D., 1982

County Recorder Beulah Hendricks

By MS, Deputy

DOCUMENT NO. 262936

Statement of Evidence:

Meander Corner on North Line of Section 3,
Township 138 North, Range 31 West, 5th Principal Meridian.
Corner is East of the Northwest Corner of Section 3.

In 1865, during the Original Public Land Survey, wood posts were set south, east, and west of the Northwest Corner of Section 3.

In 1915 Mr. Curo, Cass County Surveyor, set 2-1/2" capped pipes at the three (3) Meander Corner locations. Notes indicate that at the West Meander Corner he found the original post. The South and East Corners are unclear.

In 1940 the CCC (Civilian Conservation Corps) found capped iron pipes at all three locations.

In 1981 the Minnesota Department of Transportation found the capped pipes in place south and east. The west pipe was found lying in the lake.

For details and survey analysis contact the Minnesota Department of Transportation District Surveys Office in Brainerd.