

CERTIFICATE OF LOCATION OF GOVERNMENT CORNER

North Quarter _____ Corner of Section 5, Township 138N, Range 31W, 5th P.M.

STATE OF MINNESOTA, County of Cass

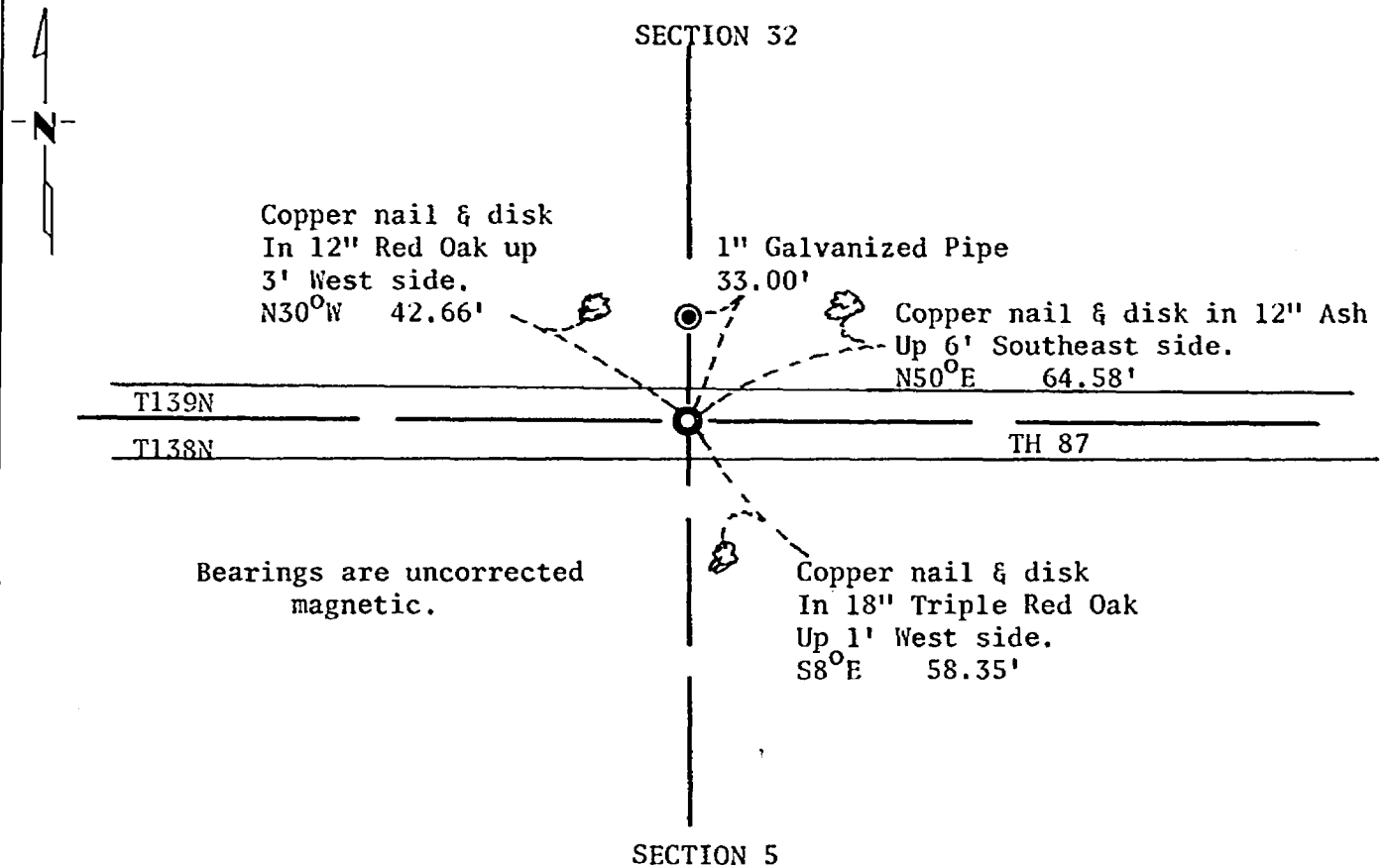
At the corner location shown on the sketch:

On 04/01/81 found a nothing.
DATE

left monument as found, lowered monument, removed monument (explain)

On 04/01/81 placed a Cast Iron monument stamped "Minn. Hwy. Dept."
DATE

SKETCH OF REFERENCE TIES



Minn. Hwy. Dept. Cast Iron Monument is 2.5' North of centerline of TH 87.

Statement of evidence relative to this corner location is on back of page.

I hereby certify that this document and the data contained herein was prepared by me or under my direct supervision.

Alphonse P. Welle 9/28/81
SIGNATURE DATE

Registration No. 11873

Land Surveyor, Professional Engineer

County Surveyor, County Engineer

26 2933

OFFICE OF THE COUNTY RECORDER

County of Cass

I hereby certify that this document was filed in the Co. Recorders office at 11:15 A.M. on the 25 day of May A.D., 1982

County Recorder Rudolph Nordmark

By MS, Deputy

DOCUMENT NO. 262933

Statement of Evidence: North Quarter Corner Section 5, Township 138 North,
Range 31 West, 5th Principal Meridian

In 1865, during the Original Public Land Survey, a wood post was set to mark the corner.

In 1919, during a road survey, reference was made to an oak stake at this corner in the road.

In 1981 the Minnesota Department of Transportation found a 1" galvanized pipe about 35 feet north of TH 87. The east-west position of this pipe agreed reasonably well with the 1919 road distances. Because the pipe was more than 33 feet north of the in-place road centerline and a lost position also was north of the road centerline, it was felt that the pipe represented a 33.00 foot offset from some previous survey position. A cast iron monument was then placed at this position.

For details and survey analysis contact the Minnesota Department of Transportation District Surveys Office in Brainerd.