

# CERTIFICATE OF LOCATION OF GOVERNMENT CORNER

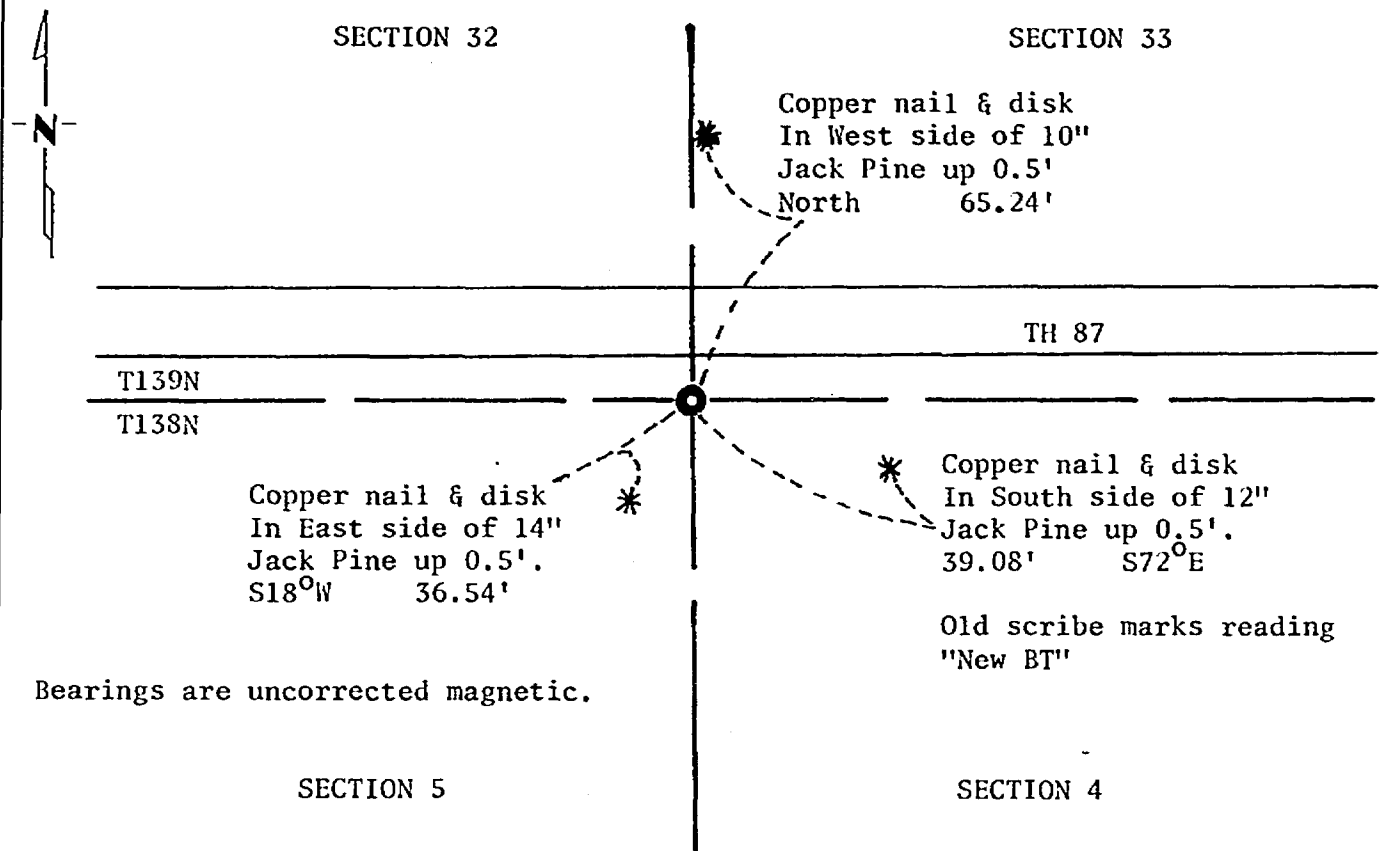
Northeast Corner of Section 5, Township 138N, Range 31W, 5th P.M.

STATE OF MINNESOTA, County of Cass

At the corner location shown on the sketch:

- On 04/01/81 found a blazed and scribed bearing tree to the southeast of  
DATE  
the corner.
  - left monument as found,  lowered monument,  removed monument (explain)
- On 04/01/81 placed a cast iron monument stamped "Minn. Hwy. Dept." (up .2')  
DATE

### SKETCH OF REFERENCE TIES



Bearings are uncorrected magnetic.

Monument is 24.5' south of centerline of TH 87.

Statement of evidence relative to this corner location is on back of page.

I hereby certify that this document and the data contained herein was prepared by me or under my direct supervision.

Alphonse P. Welle 9/28/81  
SIGNATURE DATE

Registration No. 11873

- Land Surveyor,  Professional Engineer
- County Surveyor,  County Engineer

262932  
 OFFICE OF THE COUNTY RECORDER  
 County of Cass

I hereby certify that this document was filed in the Co. Recorders office at 11:10 A.M. on the 25 day of May A.D., 1982

County Recorder Benedict K. ...

By MS, Deputy

DOCUMENT NO. 262932

Statement of Evidence: Northeast Corner Section 5, Township 138 North,  
Range 31 West, 5th Principal Meridian.

In 1865, during the Original Public Land Survey, a wood post was set to mark the corner.

In 1916 the Deputy Surveyor for Cass County visited this corner, found a 2" x 48" iron monument, making reference to "Curo's JP 9" S11<sup>0</sup>W 38.70" and marked a new bearing tree "J. Pine 4 S58<sup>0</sup>E 38.70,"

In 1940 the CCC (Civilian Conservation Corps) found a 2" iron pipe without cap and a bearing tree "7" J. Pine S66<sup>0</sup>E 38'".

In 1981 the Minnesota Department of Transportation was unable to find any pipe, but found a 12" Jack Pine scribed "New BT". A doubling of the distance from a found iron pipe at the North Quarter Corner of Section 4 and a location for the Northeast Corner of Section 4 as established from Meander Corners set by Curo, agreed with the distance call to the southeast bearing tree and a cast iron monument was set at this location.

For details and survey analysis contact the Minnesota Department of Transportation District Surveys Office in Brainerd.