

# CERTIFICATE OF LOCATION OF GOVERNMENT CORNER

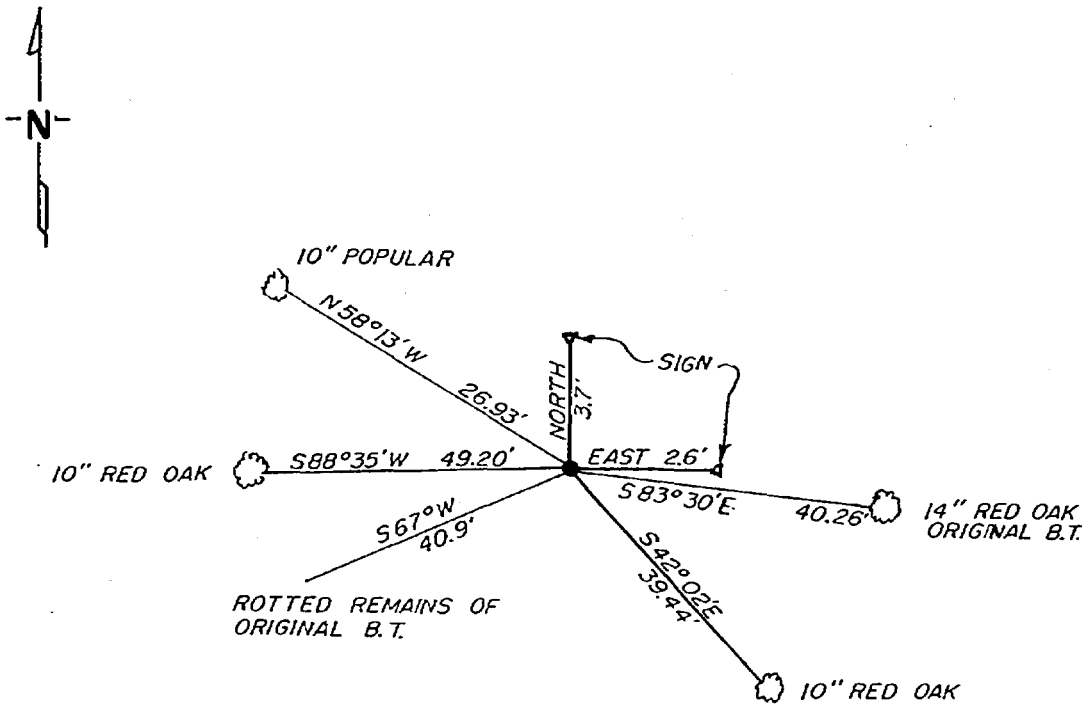
S 1/16 Corner of Section 36, Township 142, Range 30, 5 P.M.

STATE OF MINNESOTA, County of CASS

At the corner location shown on the sketch:

- On 9-9-81 found a USGLO brass cap monument marked S 1/16  
DATE  
S 35 - S 36
- left monument as found,  lowered monument,  removed monument (explain)
- On \_\_\_\_\_ placed a \_\_\_\_\_  
DATE

### SKETCH OF REFERENCE TIES



not to scale

Statement of evidence relative to this corner location is on back of page.

I hereby certify that this document and the data contained herein was prepared by me or under my direct supervision.

Walter E. Cass 12-8-81  
SIGNATURE DATE

Registration No. 11395  
 Land Surveyor,  Professional Engineer  
 County Surveyor,  County Engineer

262648

OFFICE OF THE REGISTER OF DEEDS  
 County of Cass

I hereby certify that this document was filed in the Reg. of Deeds office at 2:50 P.M. on the 7 day of May A.D., 1982

Register of Deeds Beverly Hendrich  
 By MS, Deputy

DOCUMENT NO. 262648

IN 1918, ALBINUS N. KIMMELL, US CADESTAL ENGINEER SET A 1"X36" IRON PIPE WITH BRASS CAP FOR THE S 1/16 CORNER ON THE LINE BETWEEN SECTIONS 35 AND 36 FROM WHICH HE MARKED THE FOLLOWING BT'S 5" OAK S.83½ E. 61 LKS AND 6" OAK S. 67¼ W 62 LKS.

ON SEPTEMBER 9, 1981, WALTER E. CURO FOUND THE IRON MONUMENT STANDING AS SET. THE 5" OAK IS NOW A 14" RED OAK STANDING GREEN WITH NO MARKS VISABLE, BUT IT CHECKS FOR BEARING AND DISTANCE. THE 6" OAK IS NOW JUST A STUMP HOLE WITH ROTTED WOOD IN IT WHICH CHECK FOR BEARING AND DISTANCE. WE MARK NEW BT'S AS SHOWN ON FRONT.