

# CERTIFICATE OF LOCATION OF GOVERNMENT CORNER

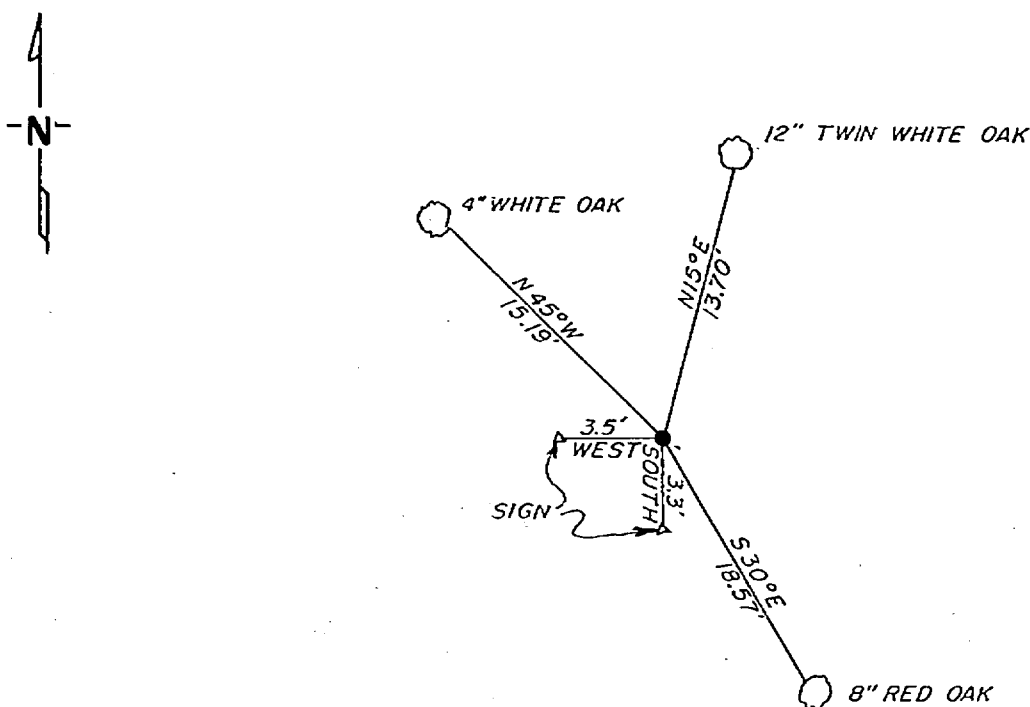
AP 1 TR 1694 Corner of Section 12, Township 141, Range 30, 5 P.M.

STATE OF MINNESOTA, County of Cass

At the corner location shown on the sketch:

- On 10-6-81 found a 1"x36" iron pipe with brass cap standing  
DATE  
in good condition  
 left monument as found,  lowered monument,  removed monument (explain)
- On \_\_\_\_\_ placed a \_\_\_\_\_  
DATE

### SKETCH OF REFERENCE TIES



not to scale

Statement of evidence relative to this corner location is on back of page.

I hereby certify that this document and the data contained herein was prepared by me or under my direct supervision.

Walter E. Cervo 12-8-81  
SIGNATURE DATE

Registration No. 11395

- Land Surveyor,  Professional Engineer  
 County Surveyor,  County Engineer

262642  
 OFFICE OF THE REGISTER OF DEEDS  
 County of Cass

I hereby certify that this document was filed in the Reg. of Deeds office at 2:40 P.M. on the 7 day of May A.D., 1982

Register of Deeds Burdah Westrich  
 By M.S., Deputy

DOCUMENT NO. 262642

In 1917, Earl G. Harrington, a US surveyor set a 1"x36" iron pipe with brass cap for AP 1 TR 1694 and AP 2 TR 1695 and AP 3 TR 1657 and AP 4 TR 1321. No BT's were made.

On October 6, 1981, Walter E. Curo and Paul Johnson find the brass cap monument standing in good condition from which we made BT's as shown on front.