

CERTIFICATE OF LOCATION OF GOVERNMENT CORNER

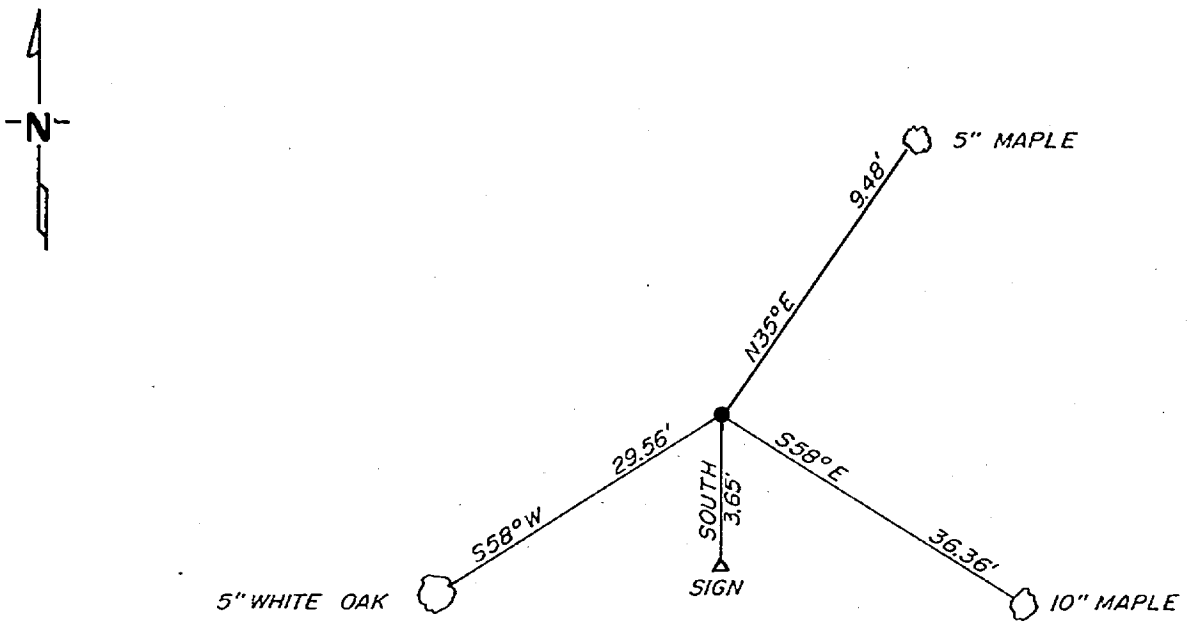
AP 2 TR 1223 Corner of Section 11, Township 141, Range 30, 5 P.M.

STATE OF MINNESOTA, County of CASS

At the corner location shown on the sketch:

- On 10-27-81 found a 1"x36" brass cap bent NE, straighten it out, and make BT's
DATE
- left monument as found, lowered monument, removed monument (explain)
- On _____ placed a _____
DATE

SKETCH OF REFERENCE TIES



not to scale

Statement of evidence relative to this corner location is on back of page.

I hereby certify that this document and the data contained herein was prepared by me or under my direct supervision.

Walter E. Curcio 12-8-81
SIGNATURE DATE

Registration No. 11395

- Land Surveyor, Professional Engineer
- County Surveyor, County Engineer

262638
 OFFICE OF THE REGISTER OF DEEDS
 County of Cass

I hereby certify that this document was filed in the Reg. of Deeds office at 2:20 P.M. on the 7 day of May A.D., 1982

Register of Deeds Beverly Herdman
 By MS, Deputy

DOCUMENT NO. 262638

In 1917, Earl G. Harrington, a US surveyor set a 1"x36" brass cap monument for AP 2 TR 1227 and AP 3 TR 1226. No Bt's were made.

On October 27, 1981, Walter Curo and Paul Johnson find the brass cap monument bent over, we straighten it up and make BT's as shown on the front.