

CERTIFICATE OF LOCATION OF GOVERNMENT CORNER

N 1/16 Corner of Section 11, Township 141, Range 30, 5 P.M.

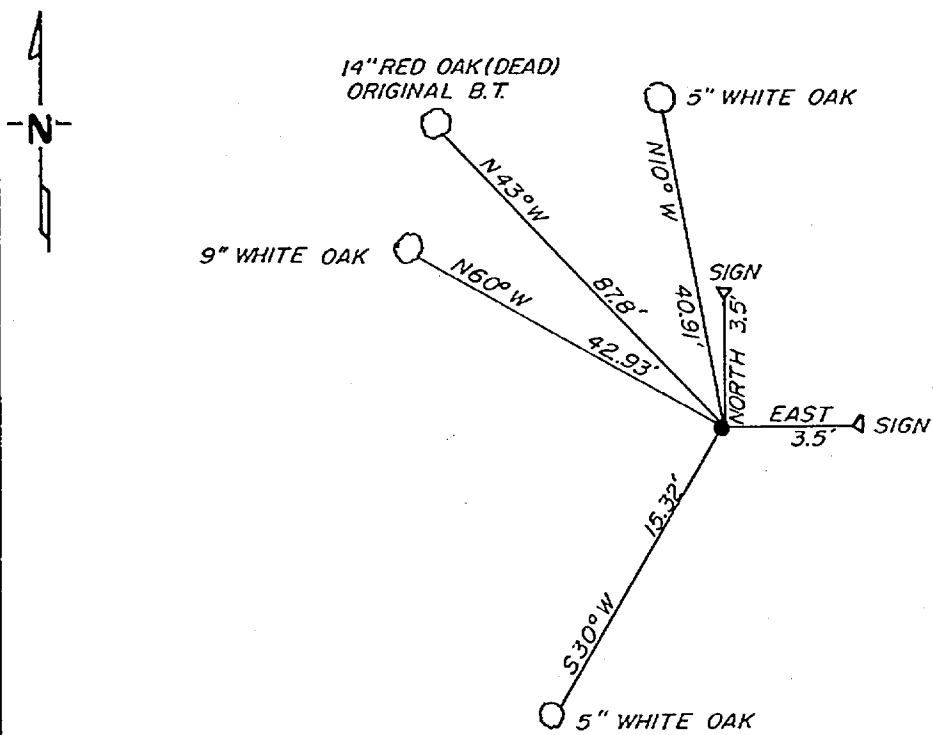
STATE OF MINNESOTA, County of CASS

At the corner location shown on the sketch:

On 10-28-81 found a 1"x36" brass cap monument standing in good ^{DATE} condition with one orig. BT which checks for bearing and dist.
 left monument as found, lowered monument, removed monument (explain)

On _____ placed a _____
DATE

SKETCH OF REFERENCE TIES



not to scale

Statement of evidence relative to this corner location is on back of page.

I hereby certify that this document and the data contained herein was prepared by me or under my direct supervision.

Walter E. Cress 12-8-81
SIGNATURE DATE

Registration No. 11395

Land Surveyor, Professional Engineer

County Surveyor, County Engineer

OFFICE OF THE REGISTER OF DEEDS

County of 262637

I hereby certify that this document was filed in the Reg. of Deeds office at 2:15 P.M. on the 7 day of May A.D., 1982

Register of Deeds Benedict Bendrich

By MS, Deputy

DOCUMENT NO. 262637

In 1917, Earl G. Harrington, a US surveyor set a 1"x36" iron pipe with brass cap for the N 1/16 corner Sec. 11 from which he made the following BT's: A 14" red oak N 20 E 250 LKS and a 8" red oak N 43-1/4 W 133 LKS.

On October 28, 1981, Walter Curo and Paul Johnson find the brass cap standing in good condition. We find a 14" red oak standing, but dead N 43 W 87.8'. The other tree would have been in what is now a pine plantation. We make new BT's as shown on front.