

CERTIFICATE OF LOCATION OF GOVERNMENT CORNER

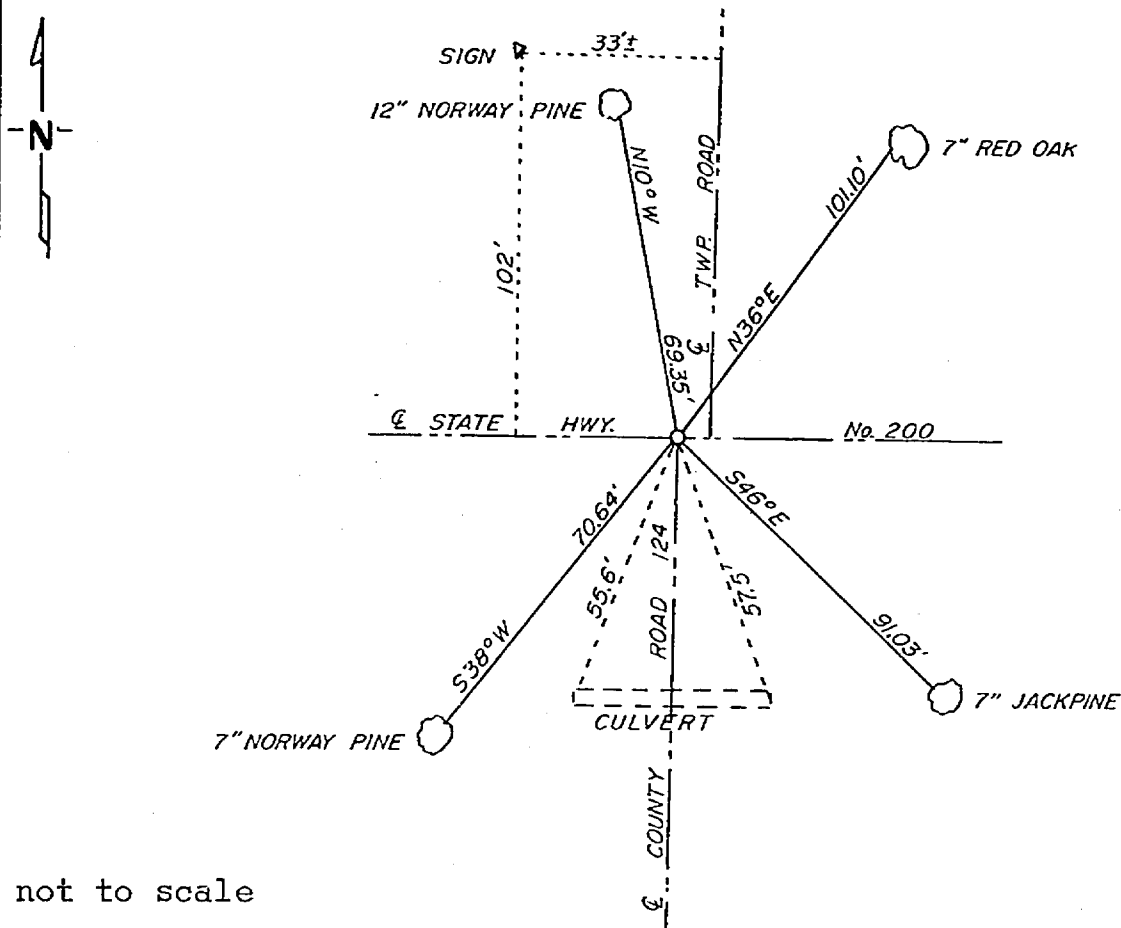
NE Corner of Section 12, Township 141, Range 30, 5 P.M.

STATE OF MINNESOTA, County of CASS

At the corner location shown on the sketch:

- On 10-28-81 found a 1/2 bolt with 1" sq. head on top of a 1"x36" brass cap monument, push it down & set 2"x24" brass cap mon. on top
 - left monument as found, lowered monument, removed monument (explain)
- On _____ placed a _____

SKETCH OF REFERENCE TIES



not to scale

Statement of evidence relative to this corner location is on back of page.

I hereby certify that this document and the data contained herein was prepared by me or under my direct supervision.

Walter E. Leno 12-8-81
SIGNATURE DATE

Registration No. 11395

- Land Surveyor, Professional Engineer
- County Surveyor, County Engineer

26 26 33
OFFICE OF THE REGISTER OF DEEDS
County of Cass

I hereby certify that this document was filed in the Reg. of Deeds office at 1:55 P.M. on the 7 day of May A.D., 19 82

Register of Deeds Bessie Handrich
By MS, Deputy

DOCUMENT NO. 26 26 33

In 1917, Earl G. Harrington a US surveyor set a 1"x36" iron pipe with brass cap for the NE corner of Sec. 12 from which he made the following BT's: 12" white oak N 79 E 99 LKS and a 14" white oak S 55 $\frac{1}{4}$ E 86 LKS.

In 1937 the M.H.D. found this monument.

In 1941 the M.H.D. found this monument and made the following BT's: A spike in 5" basswood NE 111.8 ft. a spike in 8" basswood NW 91.5, an X on the W end of conc. culv. SW 55.6, a X on E end of conc. culv. SE 57.5....

On October 28, 1981, Walter Curo and Paul Johnson find a 12"x1/2 bolt with square head on top of a brass cap monument which checks the distances to the ends of the conc. culv. we push the monument down and set a 2"x24" iron pipe with brass cap 1-1/2" below surface of the blacktop and make new BT's as shown on the front.