

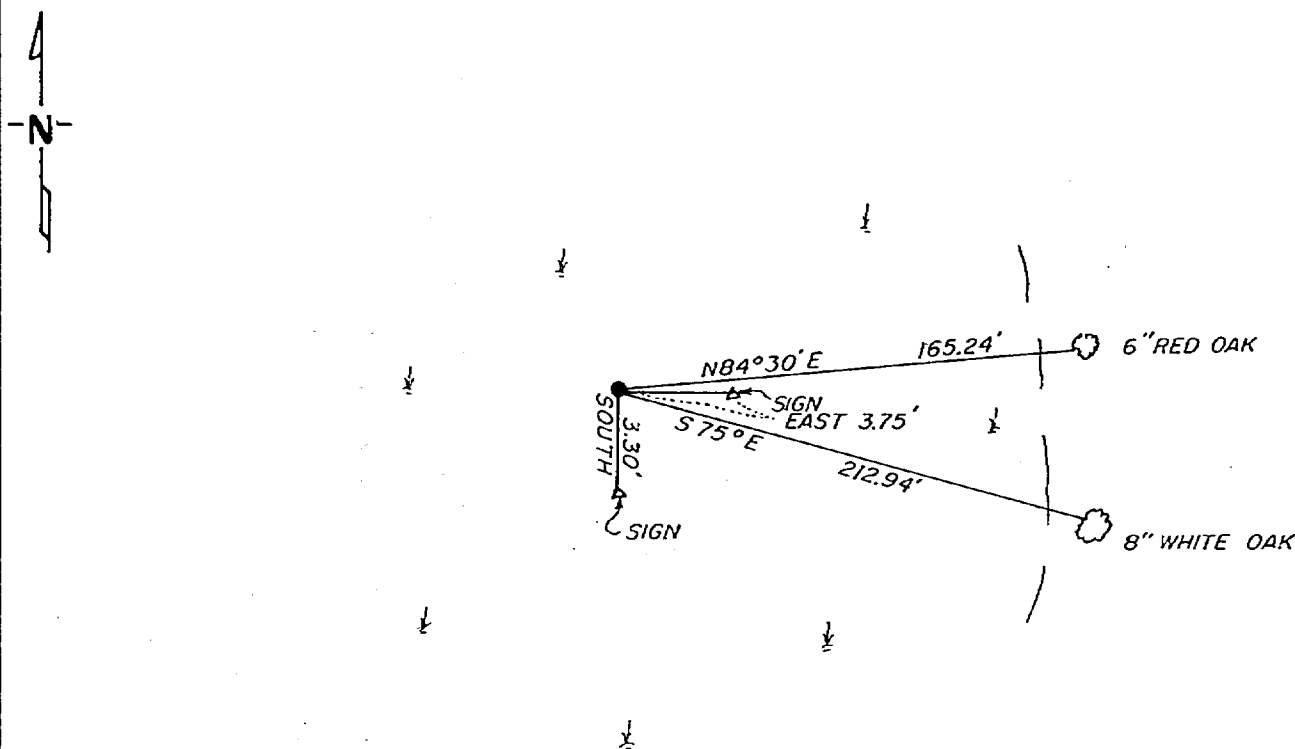
CERTIFICATE OF LOCATION OF GOVERNMENT CORNER

N 1/4 Corner of Section 1, Township 141, Range 30, 5 P.M.
STATE OF MINNESOTA, County of CASS

At the corner location shown on the sketch:

- On 9-24-81 found a 1"x36" brass cap monument in open bog 3"
DATE above surface, standing in good condition.
- left monument as found, lowered monument, removed monument (explain)
- On _____ placed a _____
DATE

SKETCH OF REFERENCE TIES



not to scale

Statement of evidence relative to this corner location is on back of page.

I hereby certify that this document and the data contained herein was prepared by me or under my direct supervision.

Walter E. Curo 12-8-81
SIGNATURE DATE

Registration No. 11395

Land Surveyor, Professional Engineer

County Surveyor, County Engineer

262627
OFFICE OF THE REGISTER OF DEEDS
County of Cass

I hereby certify that this document was filed in the Reg. of Deeds office at 1:25 P.M. on the 7 day of May A.D., 1982

Register of Deeds Bernice Hardin
By MS, Deputy

DOCUMENT NO. 262627

In 1917, Earl G. Harrington, a US Surveyor set a 1"x36" iron pipe with brass cap for the $N\frac{1}{4}$ corner from which he made the following BT's. A 10" jackpine N $78\frac{1}{2}$ E 345. LKS and a 8" red oak S32 E 323 LKS .

On September 24, 1981, Walter E. Curo and Paul Johnson find the brass cap monument in good condition 3" above surface of bog. We find no trace of the original BT's. We make new BT's as shown on front.