

CERTIFICATE OF LOCATION OF GOVERNMENT CORNER

AP 1 TR 1703 Corner of Section 1, Township 141, Range 30, 5 P.M.

STATE OF MINNESOTA, County of CASS

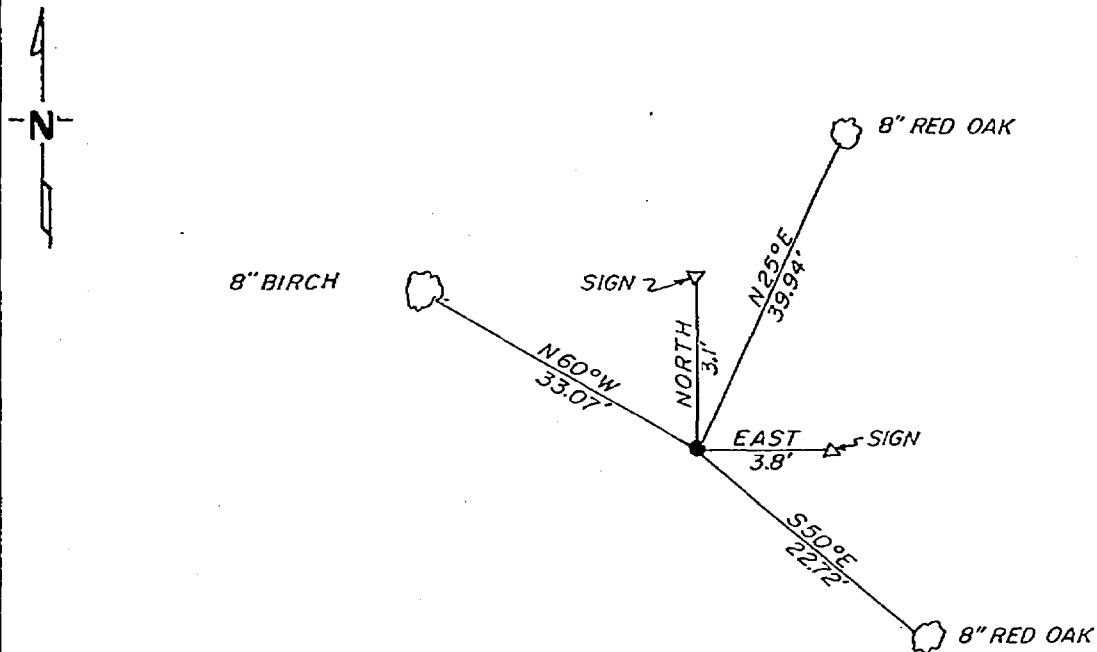
At the corner location shown on the sketch:

On 10-7-81 found a 1"x36" iron pipe with brass cap standing in good condition

left monument as found, lowered monument, removed monument (explain)

On _____ placed a _____

SKETCH OF REFERENCE TIES



not to scale

Statement of evidence relative to this corner location is on back of page.

I hereby certify that this document and the data contained herein was prepared by me or under my direct supervision.

Walter E. Lewis 12-8-81
SIGNATURE DATE

Registration No. 11395

Land Surveyor, Professional Engineer

County Surveyor, County Engineer

262623
OFFICE OF THE REGISTER OF DEEDS
County of Cass

I hereby certify that this document was filed in the Reg. of Deeds office at 1:05 P.M. on the 7 day of May A.D., 1982

Register of Deeds Burlah Hardwick
By MS, Deputy

DOCUMENT NO. 262623

In 1917, Earl G. Harrington, a US surveyor set a 1"x36" iron pipe with brass cap for AP 1 TR 1703 and AP 2 TR 1258 and AP 4 TR 1683. No BT's were made.

On October 7, 1981, Walter E. Curo and Paul Johnson find the brass cap monument standing in good condition from which we make BT's as shown on front.