

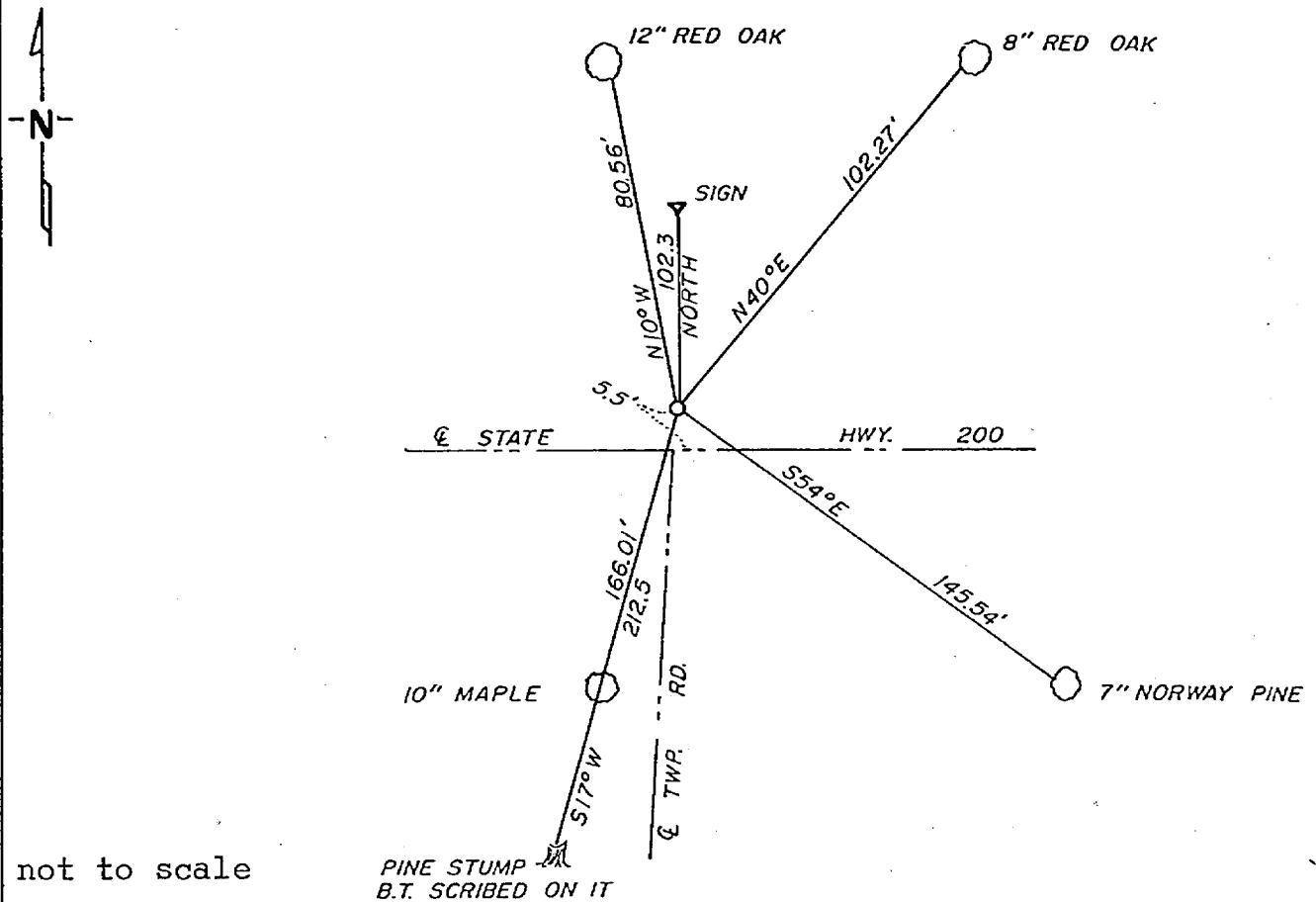
# CERTIFICATE OF LOCATION OF GOVERNMENT CORNER

NW Corner of Section 11, Township 141, Range 30, 5 P.M.  
 STATE OF MINNESOTA, County of CASS

At the corner location shown on the sketch:

- On \_\_\_\_\_ found a \_\_\_\_\_  
DATE
- left monument as found,  lowered monument,  removed monument (explain)
- On 11-2-81 placed a 2"x24" iron pipe with brass cap for NW  
DATE corner from original BT

### SKETCH OF REFERENCE TIES



Statement of evidence relative to this corner location is on back of page.

I hereby certify that this document and the data contained herein was prepared by me or under my direct supervision.

Walter E. Cass 12-8-81  
SIGNATURE DATE

Registration No. 11395

- Land Surveyor,  Professional Engineer
- County Surveyor,  County Engineer

262618  
 OFFICE OF THE REGISTER OF DEEDS

County of Cass

I hereby certify that this document was filed in the Reg. of Deeds office at 11:40 A.M. on the 7 day of May A.D., 1982

Register of Deeds Burdah Hendrick

By MS, Deputy

DOCUMENT NO. 262618

In 1917, Earl G. Harrington, a US surveyor set a 1"x36" iron pipe with brass cap for the NW corner of Sec. 11 from which he made the following BT's: A 10" jackpine S  $70\frac{1}{2}$  E 222 LKS, a 8" white pine S  $17\frac{1}{2}$  W 322 LKS and a 14" white oak N  $73\frac{1}{2}$  W 185 LKS.

ON November 2, 1981, Walter Curo and Paul Johnson find a scribed 8" pine stump S  $17\frac{1}{2}$  W 212.5 ft. We look for the other BT's, but any evidence would have been wiped out in highway construction. We measure south from the AP to the north and west from the NE corner of Sec. 11. We dig a hole 4 ft. deep and our locator shows that there is something deeper, so we set a 2"x24" iron pipe with brass cap  $1\frac{1}{2}$ " below surface of blacktop and make new BT's as shown on front.