

CERTIFICATE OF LOCATION OF GOVERNMENT CORNER

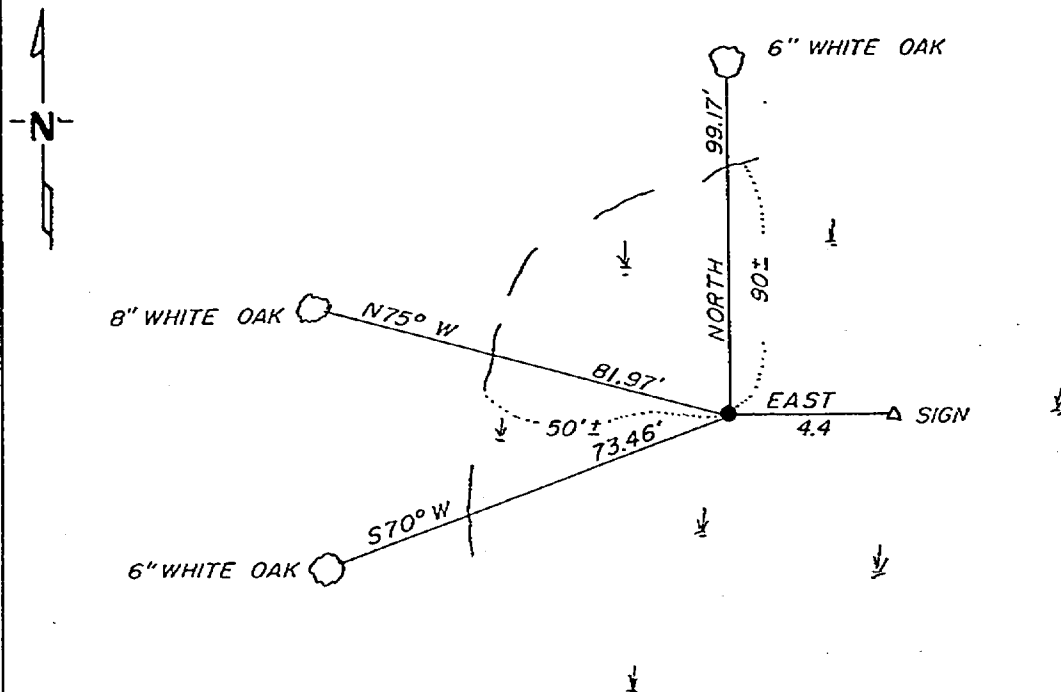
CS 1/16 Corner of Section 1, Township 141, Range 30, 5 P.M.

STATE OF MINNESOTA, County of CASS

At the corner location shown on the sketch:

- On 10-26-81 found a 1"x36" brass cap monument bent, remove it, straighten it out and put it back in place, wire to steel post
 left monument as found, lowered monument, removed monument (explain)
- On _____ placed a _____
DATE

SKETCH OF REFERENCE TIES



not to scale

Statement of evidence relative to this corner location is on back of page.

I hereby certify that this document and the data contained herein was prepared by me or under my direct supervision.

Walter E. Cass 12-8-81
SIGNATURE DATE

Registration No. 11395

- Land Surveyor, Professional Engineer
- County Surveyor, County Engineer

262614
 OFFICE OF THE REGISTER OF DEEDS
 County of Cass

I hereby certify that this document was filed in the Reg. of Deeds office at 11:20 A. M. on the 7 day of May A.D., 1982

Register of Deeds Bulah Hendricks

By MS, Deputy

DOCUMENT NO. 262614

In 1917, Earl G. Harrington, US surveyor set a 1"x36" iron pipe with brass cap for CS 1/16 from which he made the following BT's: A 6" red oak N $24\frac{1}{2}$ E 166 LKS and a 10" red oak N $51\frac{1}{4}$ W 153 LKS.

On October 26, 1981, Walter Curo and Paul Johnson find the brass cap monument 1' below surface of the swamp and bent, tie it out and remove it and straighten it out and put it back in and make new BT's as shown on front. We find no trace of the original BT's.