

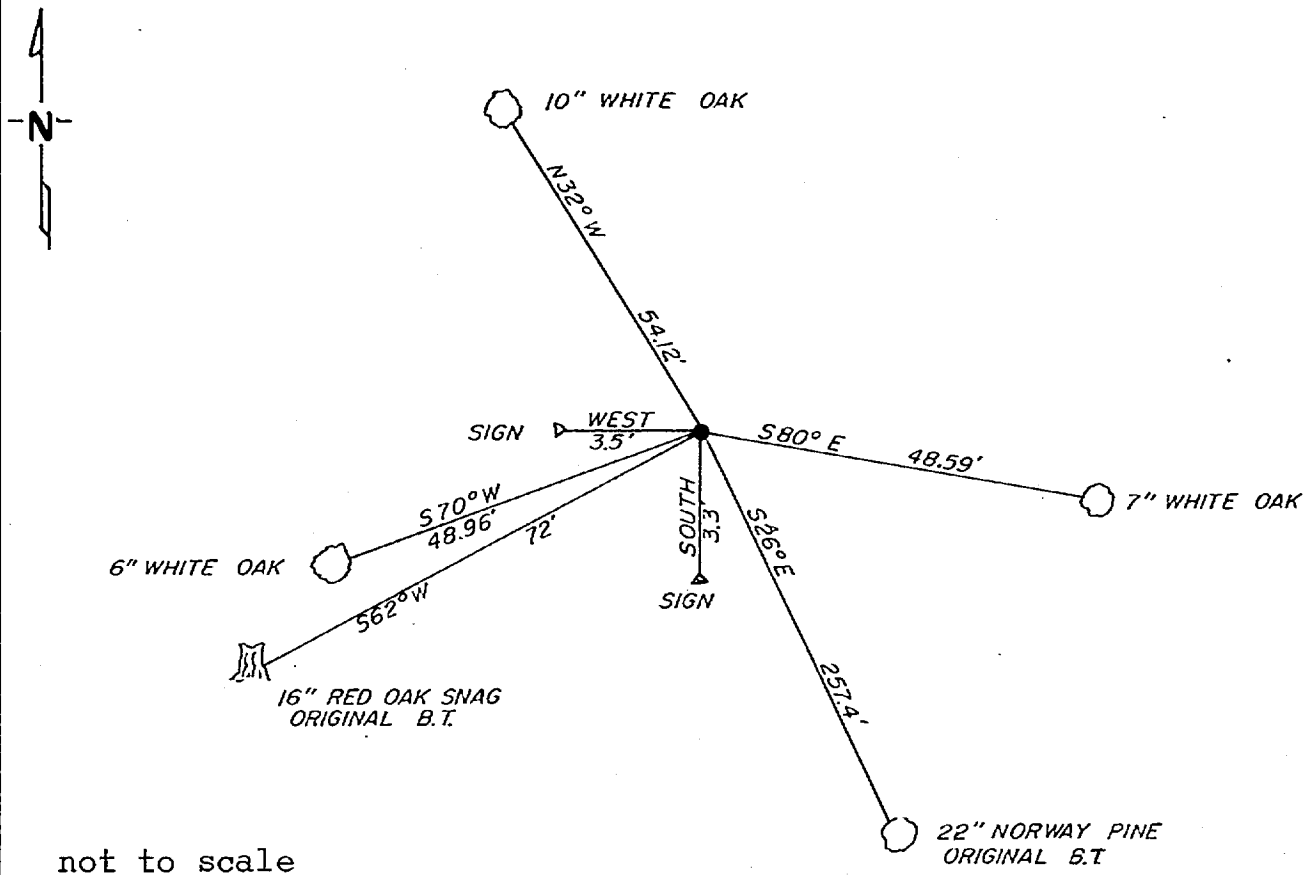
CERTIFICATE OF LOCATION OF GOVERNMENT CORNER

C 1/4 Corner of Section 1, Township 141, Range 30, 5 P.M.
 STATE OF MINNESOTA, County of CASS

At the corner location shown on the sketch:

- On 10-26-81 found a 1"x36" brass cap monument standing in good condition with one orig. BT standing green, other one rotted
DATE left monument as found, lowered monument, removed monument (explain)
- On _____ placed a _____
DATE

SKETCH OF REFERENCE TIES



Statement of evidence relative to this corner location is on back of page.

I hereby certify that this document and the data contained herein was prepared by me or under my direct supervision.

Walter E. Cass 12-8-81
SIGNATURE DATE

Registration No. 11395

Land Surveyor, Professional Engineer

County Surveyor, County Engineer

262609
 OFFICE OF THE REGISTER OF DEEDS

County of Cass

I hereby certify that this document was filed in the Reg. of Deeds office at 10:55 A. .M. on the 7 day of May A.D., 1982

Register of Deeds Daniel Hendricks

By MS, Deputy

DOCUMENT NO. 262609

In 1917, Earl G. Harrington, a US surveyor set a 1"x36" iron pipe with brass cap for the C 1/4 corner Sec.1 from which he made the following BT's: A 8" red oak S 62½ W 109 LKS and a 8" norway pine S 26¼ E 390 LKS.

On October 26, 1981, Walter Curo and Paul Johnson find the brass cap monument standing in good condition. Found remains of a 16" red oak S 62 W 72' and a 22" norway pine standing green S 26 E 257.4'. We make new BT's as shown on the front.