

CERTIFICATE OF LOCATION OF GOVERNMENT CORNER

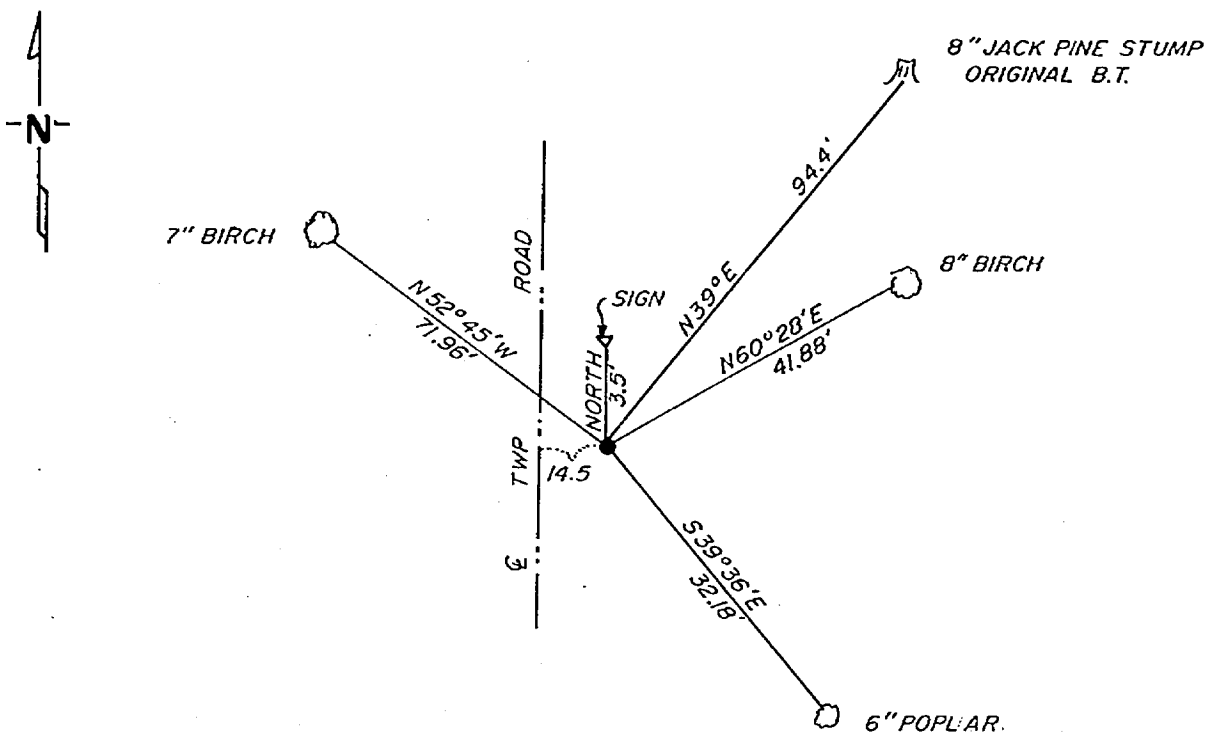
CS 1/16 Corner of Section 36, Township 142, Range 30, 5 P.M.

STATE OF MINNESOTA, County of CASS

At the corner location shown on the sketch:

- On 9-14-81 found a 1'x36' iron pipe with brass cap standing
DATE in good condition
 left monument as found, lowered monument, removed monument (explain)
- On _____ placed a _____
DATE

SKETCH OF REFERENCE TIES



not to scale

Statement of evidence relative to this corner location is on back of page.

I hereby certify that this document and the data contained herein was prepared by me or under my direct supervision.

Walter E. Hess 12-8-81
SIGNATURE DATE

Registration No. 11395

Land Surveyor, Professional Engineer

County Surveyor, County Engineer

262606
 OFFICE OF THE REGISTER OF DEEDS
 County of Cass

I hereby certify that this document was filed in the Reg. of Deeds office at 10:44 A.M. on the 7 day of May A.D., 19 82

Register of Deeds 262606

By Beverly Hendricks, Deputy

DOCUMENT NO. Ms

In 1918, Albinus N. Kimmell a US Cadastral engineer set a 1"x36" iron pipe with brass cap for the CS 1/16 corner from which he made the following BT's a 6" jack-pine N 40 E 143 LKS and a 9" norway pine N 29½ W 20 LKS.

On September 14, 1981, Walter E. Curo and Paul Johnson find the 1"x36" brass cap monument in good condition. We find the scribed stump of the 6" jackpine which checks for bearing and distance. The norway pine would have to be in the center-line of the road, so, it is gone. We make new BT's as shown on the front.