

CERTIFICATE OF LOCATION OF GOVERNMENT CORNER

S 1/16 Corner of Section 26, Township 142 N, Range 26 E, 5th P.M.

STATE OF MINNESOTA, County of CASS

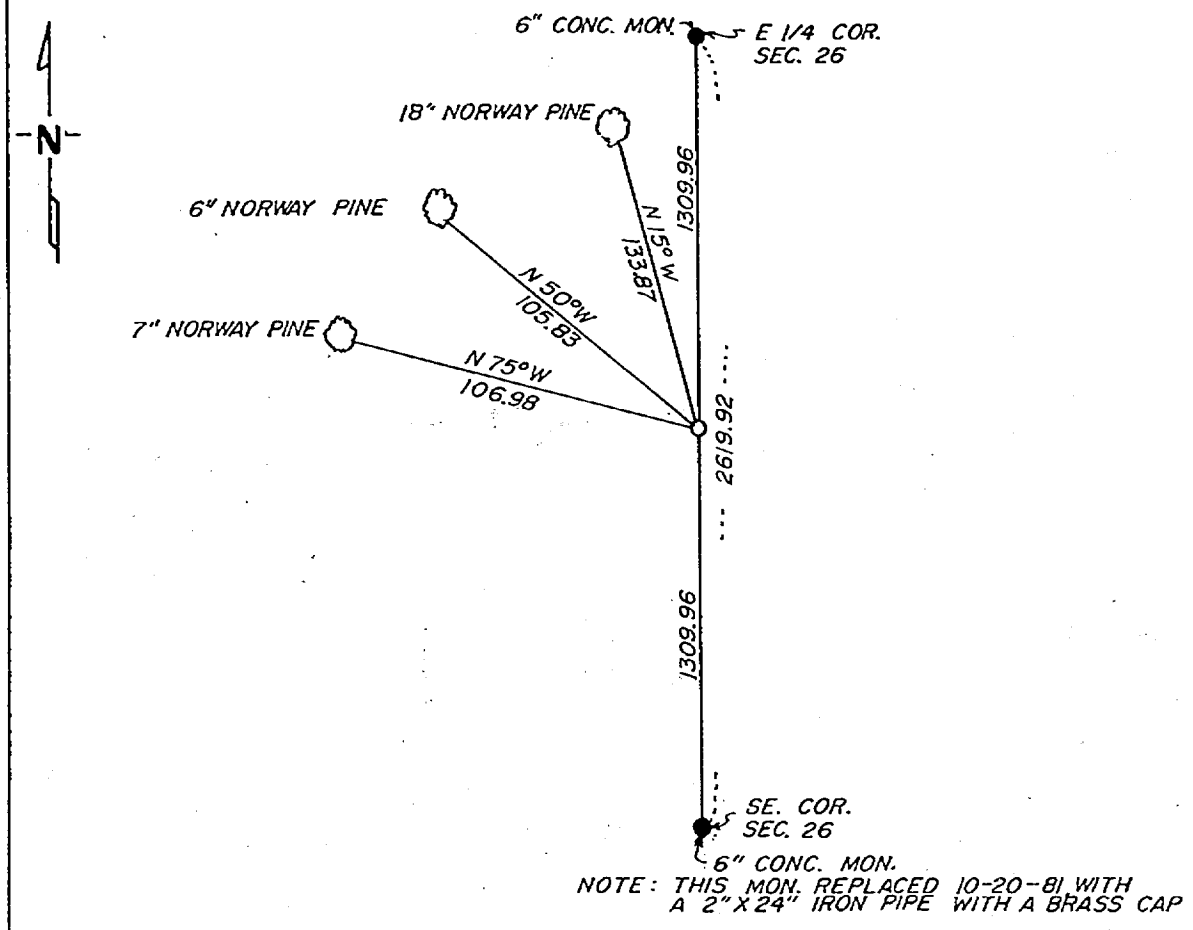
At the corner location shown on the sketch:

On _____ found a _____
DATE

left monument as found, lowered monument, removed monument (explain)

On 10-2-81 placed a 2"x24" iron pipe with brass cap at the midpoint
DATE and on line between the E 1/4 corner and the SE corner, Sec. 26

SKETCH OF REFERENCE TIES



~~Statement of evidence relative to this corner location is on back of page~~
261668

I hereby certify that this document and the data contained herein was prepared by me or under my direct supervision.

Walter E. Cass 2-22-82
SIGNATURE DATE

Registration No. 11395
 Land Surveyor, Professional Engineer
 County Surveyor, County Engineer

OFFICE OF THE REGISTER OF DEEDS
County of Cass

I hereby certify that this document was filed in the Reg. of Deeds office at 1:00 P.M. on the 3 day of March A.D., 1982

Register of Deeds Dental Herdisher County Recorder
By MS, Deputy
DOCUMENT NO. 261668