

CERTIFICATE OF LOCATION OF GOVERNMENT CORNER

EAST QUARTER Corner of Section 22, Township 141, Range 29, 5th P.M.

STATE OF MINNESOTA, County of CASS

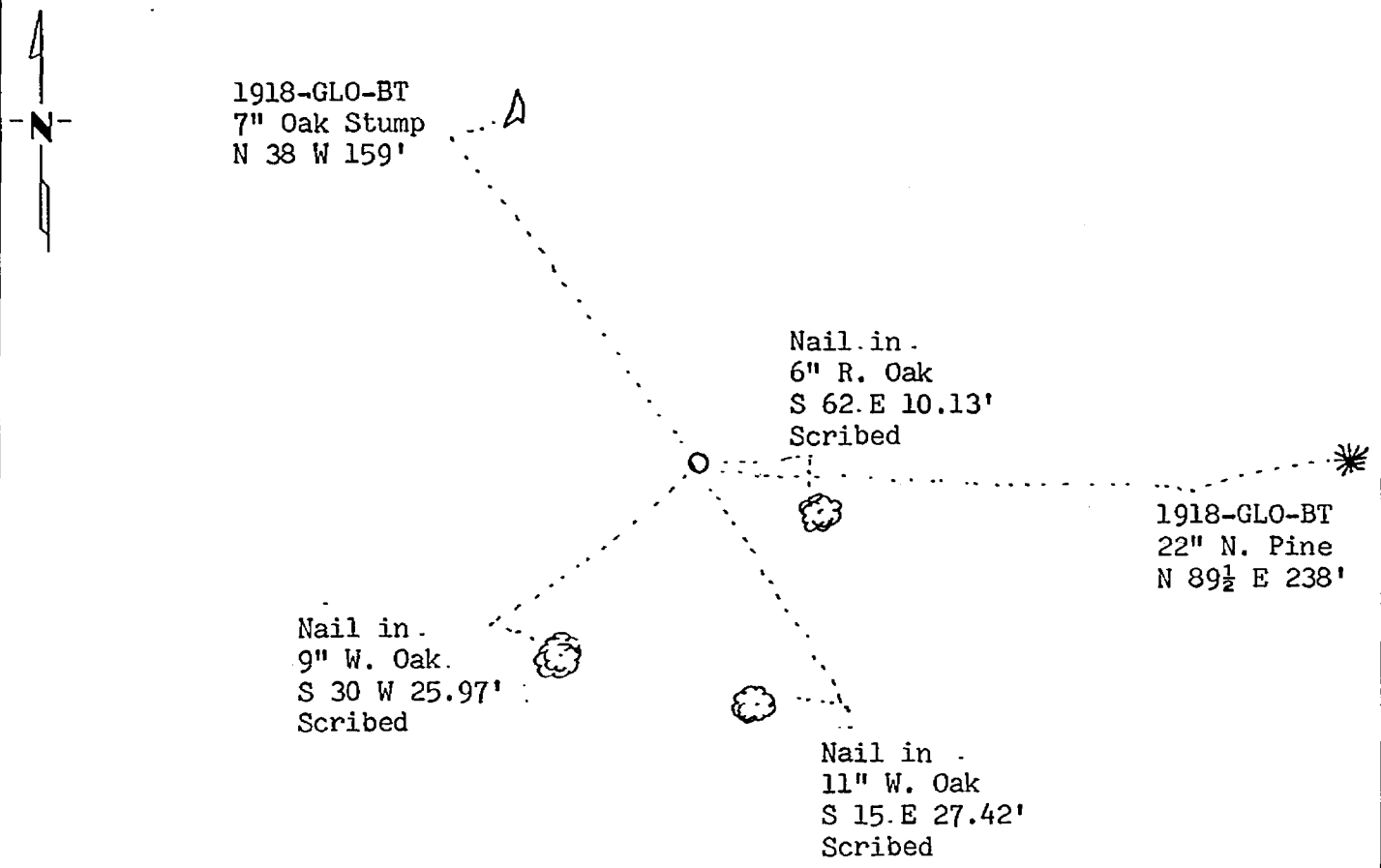
At the corner location shown on the sketch:

On 7/23/80 found a marked GLO brass cap monument in good condition.
DATE

left monument as found, lowered monument, removed monument (explain)

On _____ placed a _____
DATE

SKETCH OF REFERENCE TIES



BEARINGS ARE APPROXIMATE

Statement of evidence relative to this corner location is on back of page.

261357

I hereby certify that this document and the data contained herein was prepared by me or under my direct supervision.

Mary H. Stevenson 2-1-82
SIGNATURE DATE

Registration No. 12684

Land Surveyor, Professional Engineer
 County Surveyor, County Engineer

OFFICE OF THE COUNTY RECORDER

County of Cass

I hereby certify that this document was filed in the Co. Recorders office at 9:20 A.M. on the 2 day of Feb. A.D., 19 82

County Recorder Beneah Hendrichs

By MS, Deputy

DOCUMENT NO. 261357

Statement of Evidence:

- 1873 U.S. General Land Office survey set wood post for this corner and marked the following bearing trees: 28" W. Pine N 40 W 22 links and 6" N Pine N 10 E 39 links.
- 1918 U.S. General Land Office dependent resurvey reestablished this corner by proportional lost method. No evidence was found of the original post or bearing trees. An iron pipe with a marked brass cap was set to mark the corner. The following bearing trees were marked: 10" N. Pine N 89-30 E 361 links and 12" W. Oak N 38 W 241 links.
- 1968 USFS technician L. Witthoeft found the brass cap monument in place. No evidence was found of the bearing trees.
- 1980 USFS technician William Olson found the GLO monument in good condition. Three new bearing trees were marked and are shown on this certificate. No evidence of the 1918 bearing trees was found.
- 1981 County Surveyor's Records in the Recorder's Office were checked and no resurvey information was found on this corner.
- 1982 On Jan. 29, corner was visited and items found as per 1980 USFS report, except that evidence of the two 1918 bearing trees were found. 7' high Oak stump with old blaze scar N 38 W 159' \pm and 22" N. Pine with old blaze scar N 89 $\frac{1}{2}$ E 238' \pm . The brass cap marking is facing south instead of the normal of facing north. However, it does not appear to have been moved. Since old BTs fit the brass cap, I accepted it as marking the same position as when set in 1918.