

# CERTIFICATE OF LOCATION OF GOVERNMENT CORNER

Southwest Corner of Section 24, Township 145 N, Range 29 W, 5th P.M.

STATE OF MINNESOTA, County of Cass

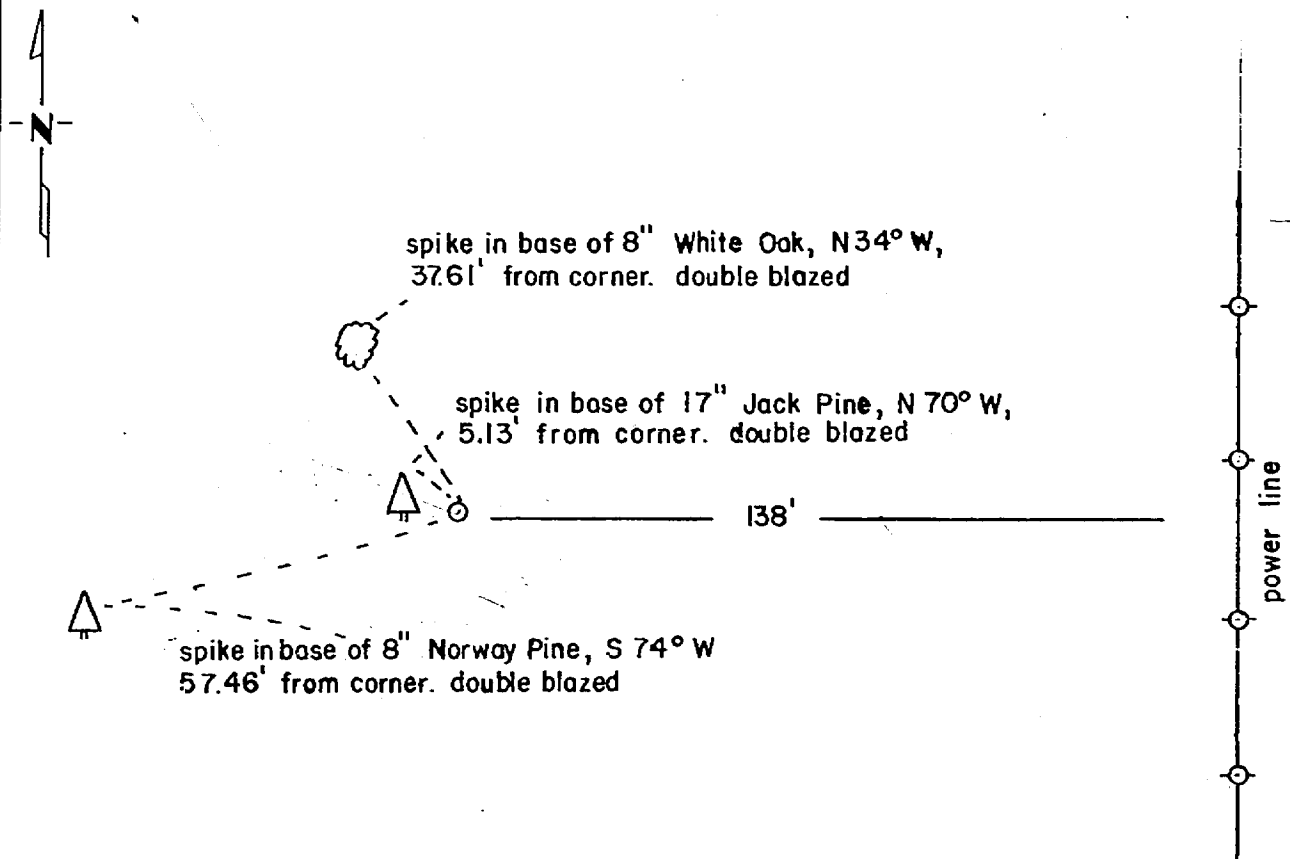
At the corner location shown on the sketch:

On \_\_\_\_\_ found a see statement of evidence  
DATE

left monument as found,  lowered monument,  removed monument (explain)

On 5/6/81 placed a 20" cast iron monument 6" above the surface  
DATE

### SKETCH OF REFERENCE TIES



bearings assume 6° declination

Statement of evidence relative to this corner location is on back of page. 260588

I hereby certify that this document and the data contained herein was prepared by me or under my direct supervision.

David D. Claypool 7/14/81  
SIGNATURE DATE

Registration No. 13298

Land Surveyor,  Professional Engineer

County Surveyor,  County Engineer

### OFFICE OF THE COUNTY RECORDER

County of Cass

I hereby certify that this document was filed in the Co. Recorders office at 10:20 A.M. on the 3 day of Dec. A.D., 1981

County Recorder Beverly H. Jirish

By MS, Deputy

DOCUMENT NO. 260588

Statement of Evidence:

- 1874 - P.F. Conger, U.S. Deputy Surveyor, subdivided the Township. He set a post to mark the corner and marked four bearing trees as accessories; a Black Pine 8 inch South 45 degrees West 10 links, a Black Pine 8 inch North 56 degrees East 15 links, a Black Pine 10 inch North 61 degrees East 29 links and a Black Pine 10 inch South 35 degrees West 38 links.
- 1914 - J.A. Doney, Forest Ranger, found a Jack Pine stake and a fallen Jack Pine bearing tree Southwest.
- 1974 - Charles E. Akin Jr, Cadastral Surveyor, Bureau of Land Management, subdivided part of section 25. He indicates nothing was found and the corner was set lost by double proportion measurement. He did not monument the corner.
- 1981 - David D. Claypool Land Surveying, subdivided section 24 for the Bug School site. This corner was set by lost methods, double proportion between the original M.C. position, between sections 25 and 26 in Portage Lake, and the Northwest corner of section 24 as found and from the Southeast of section 24 to the M.C. between sections 23 and 26 as set by BLM on the East shore of Portage Lake. This position agrees mathmatically with the position as described by BLM in 1974.