

CERTIFICATE OF LOCATION OF GOVERNMENT CORNER

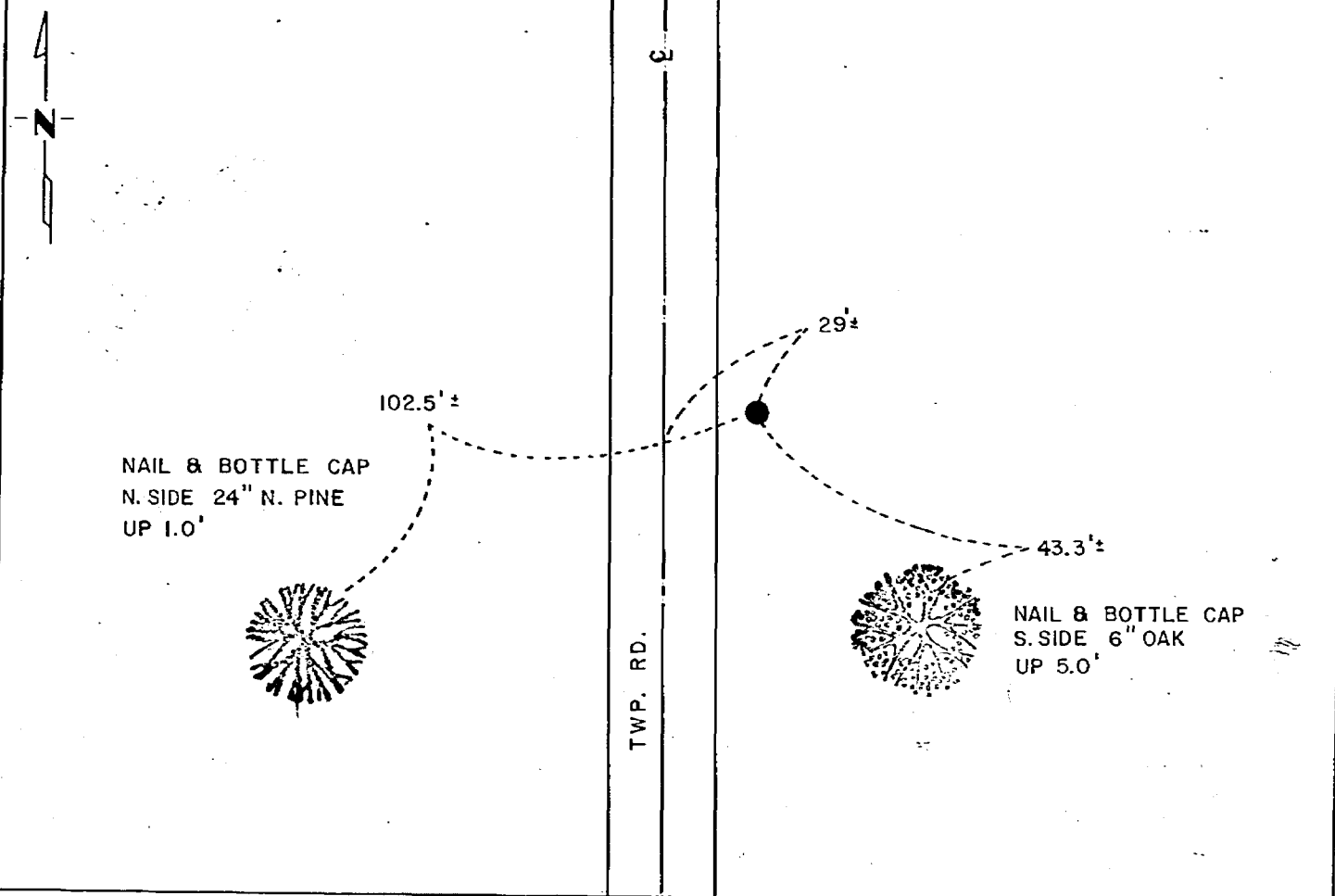
EAST QUARTER Corner of Section 21, Township 136, Range 29, 5th P.M.

STATE OF MINNESOTA, County of CASS

At the corner location shown on the sketch:

- On _____ found a _____
DATE
- left monument as found, lowered monument, removed monument (explain)
- On 1-4-78 placed a 3/4" x 24" Iron Rod with disc
DATE

SKETCH OF REFERENCE TIES



Statement of evidence relative to this corner location is on back of page.

I hereby certify that this document and the data contained herein was prepared by me or under my direct supervision.

Gay H. Stevenson 10-5-78
SIGNATURE DATE

Registration No. 12684

- Land Surveyor, Professional Engineer
- County Surveyor, County Engineer.

OFFICE OF THE REGISTER OF DEEDS

County of Cass

I hereby certify that this document was filed in the Reg. of Deeds office at 3:10 P. M. on the 12 day of Aug. A.D., 19 81

Register of Deeds Dorothy H. White County Recorder

By ms Deputy

DOCUMENT NO. 258659

MICROFILM

Statement of Evidence: East Quarter Corner of Section 21, T136-R29

The original corner was established and monumented by the U.S. General Land Office in 1870. Field notes describe monument as a post with two bearing trees marked for future reference.

In July, 1977, the DNR Engineering Bureau contacted the Crow Wing and Cass County Offices of Recorder, Engineer and Surveyor. Walter Curo, R.L.S. from Hackensack and M. Landecker, R.L.S. from Pequot Lakes were contacted. Highway alignment plans and field notes for Minn. #371 were obtained from the Minnesota Department of Transportation.

A section corner sketch on page 140 in Book #216 by John Curo, discloses a government bearing tree stump in place.

Survey record data on page 95 in Book #67 by Curo, surveyor, discloses that on June 18, 1937, the corner was used for a survey in Section 21. The bearing tree stump was referred to.

Survey record data on page 44 in Book #266 by John Curo in 1944, discloses an old 1/4 post and remains of old SE bearing tree stump in place. Information on pages 45, 46, 47 and 54 in Book #266 also relate to the corner.

Page 117 of Book #266 show a 1"x30" Ford axle set for the 1/16th corner midway between the NE and E Quarter corners of Section 21. Page 54 of Book #266 gives traverse information for the east line of Section 21 as follows: SE corner to E Quarter corner 2702.54' and E Quarter to NE corner 2683.96'. The notes show that if line from SE corner to E Quarter corner is extended north, it falls 13.10' east of the NE corner.

In the 1970's, M. Landecker, R.L.S., set an iron pipe at the corner in line and midway between Section corners. The northeast corner of Section 21 used by Landecker appears erroneous making the Quarter corner wrong also.

In the Fall of 1977 DNR traversed the east line of Section 21. We found the SE and NE corners of Section 21 and the iron axle at the 1/16th corner as set by Curo. We measured 1340.78' from the NE corner south to the axle. We then extended this line south and doubled the distance to set a temporary point for the Quarter corner. This position fell in deep cut area of the north-south road and we found no evidence of the corner. From our temporary point we measured south 2704.32' to the SE corner of Section 21. A line extended from the SE corner north through our temporary point falls 14.64' east of the NE corner. Our temporary point is 23.36' northeasterly of the iron pipe set by Landecker. We searched the area of the SE bearing tree and found no positive evidence of the tree although there are remains of rotten stumps in the area.

We feel our temporary corner position marks the perpetuated location of the original Quarter corner using Curo's notes as evidence.

We notified Mr. Landecker of our findings.

On January 4, 1978 we set a 3/4"x24" iron rod with disc on top at our temporary position. Because of deep cut area in road we were unable to take good ties and ties shown on certificate are approximate. Traverse information is available from the Minnesota DNR Bureau of Engineering.